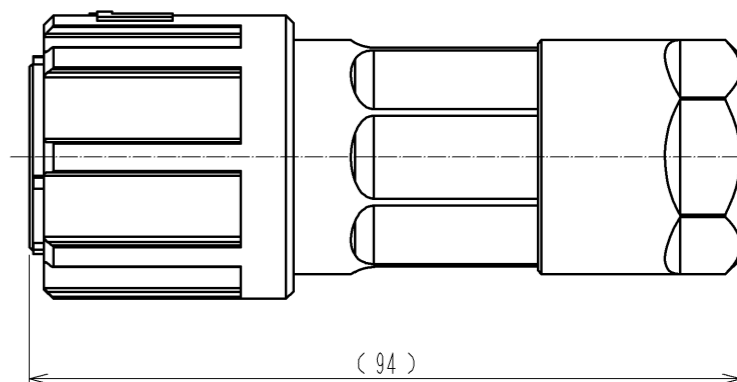
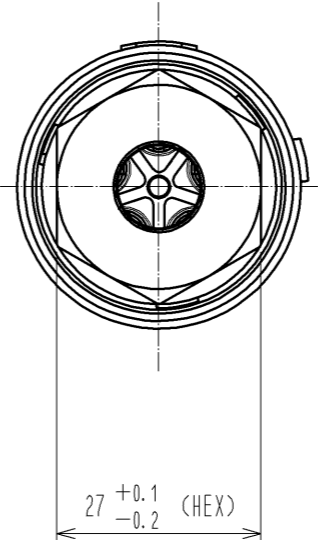
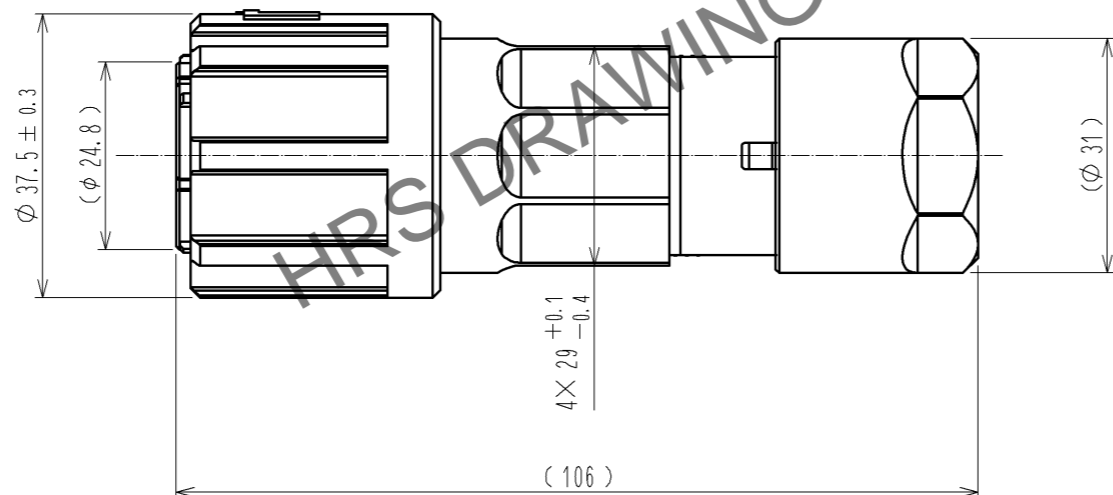
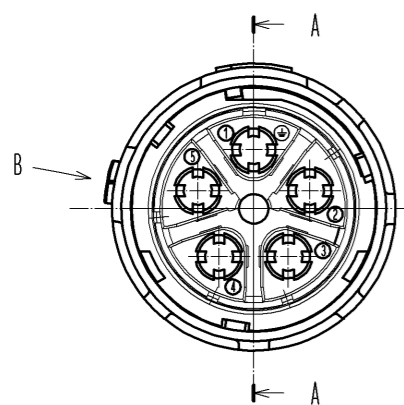
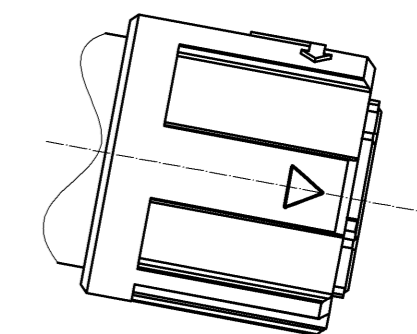
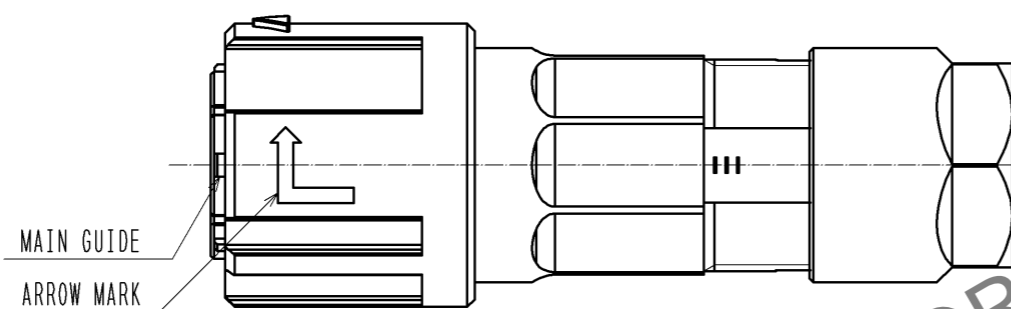
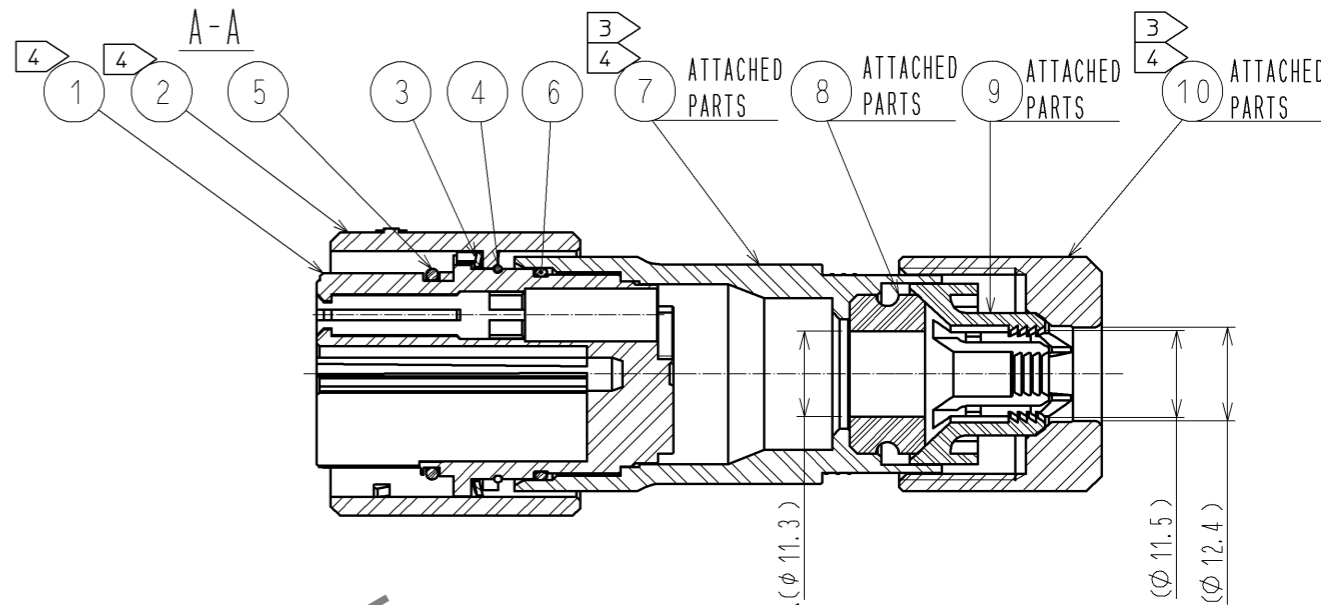
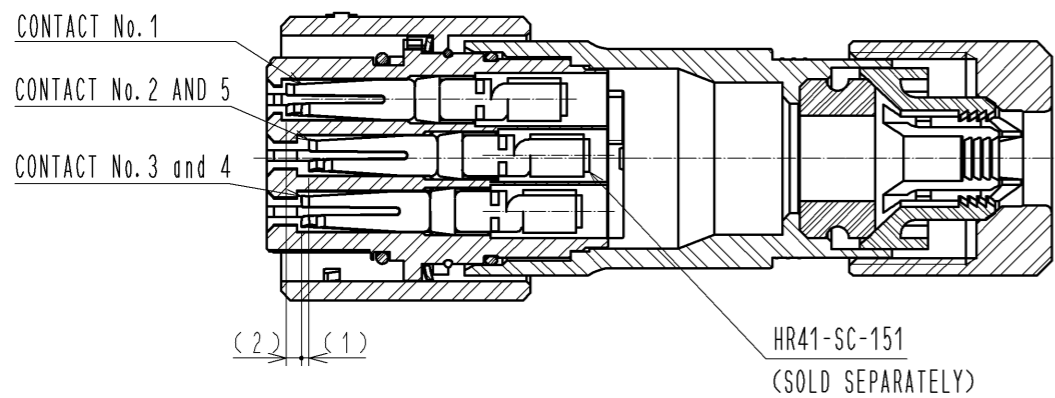


Sep.1.2024 Copyright 2024 HIROSE ELECTRIC CO., LTD. All Rights Reserved.
In case of consideration for using Automotive equipment / device which demand high reliability, kindly contact our sales window correspondents.

Fig.1 THE STATE APPLICABLE CONTACT ASSEMBLED AND 3-STEP SEQUENTIAL STRUCTURE.



- NOTES
- 1 Fig.1 SHOWS THE STATE APPLICABLE CONTACT ASSEMBLED AND 3-STEP SEQUENTIAL STRUCTURE.
 - APPLICABLE CRIMPING CONTACT : HR41-SC-151
 - 2 APPLICABLE CRIMP CONTACT EXTRACTION TOOL : HR41-TP
 - 3 The RECOMMENDED TIGHTENING TORQUE OF REF. NO. ⑦ AND ⑩ TO BE 5 TO 5.5 N · m
THE ADHESIVE FOR PREVENTION OF LOOSENESS IS NOT NECESSARY IN THE FIRST TIME.
LOCTITE 263, LOCPRIMER 7649, HENKEL JAPAN IS RECOMMENDED TO PREVENT REF NO. ⑦, ⑩ FROM LOOSING. AFTER THE SECOND TIME.
 - 4 ROTATION EXAMPLES ARE SHOWN FOR REF.NO. ①, ②, ⑦ AND ⑩.
 - 5 Fig. 2 SHOWS THE APPEARANCE AFTER ASSEMBLY.
 - 6 THE CABLE PULL FORCE, TWISTING STRENGTH, WATER TIGHTNESS AND OTHER CHARACTERISTICS MAY DIFFER, DEPENDING ON CABLE STRUCTURE.
PLEASE CONFIRM BEFORE THE USE.
 - 7 THE ASSEMBLY OF THIS PRODUCT APPLIES TO THE MANUAL ETAD-C0288.

5	SILICONE RUBBER	(LIGHT RED)	10	POLYAMIDE	(BLACK) UL94V-0
4	STAINLESS STEEL		9	POLYAMIDE	(CNC.WHITE) UL94V-0
3	STAINLESS STEEL		8	SILICONE RUBBER	(BLACK)
2	POLYAMIDE	(BLACK) UL94V-0	7	POLYAMIDE	(BLACK) UL94V-0
1	POLYBUTYLENE TEREPHTHALATE	(BLACK) UL94V-0	6	SILICONE RUBBER	(RED)
NO.	MATERIAL	FINISH . REMARKS	NO.	MATERIAL	FINISH . REMARKS

UNITS mm		SCALE 1 : 1	COUNT 3	DESCRIPTION OF REVISIONS DIS-C-003016	DESIGNED KN. IKEHARA	CHECKED HY. KOBAYASHI	DATE 13. 10. 07
HRS HIROSE ELECTRIC CO., LTD.		APPROVED : SU. OBARA	12. 06. 20	DRAWING NO. EDC3-117698-00			
		CHECKED : HY. KOBAYASHI	12. 06. 20	PART NO. HR41-25WBP-5SC			
		DESIGNED : TY. SUZUKI	12. 06. 20	CODE NO. CL141-0009-9-00			
		DRAWN : TY. SUZUKI	12. 06. 20			1/1	