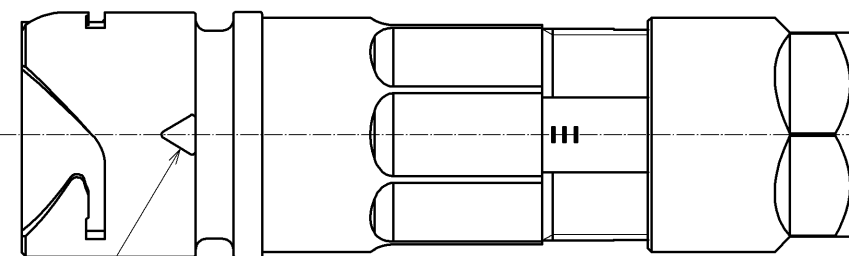
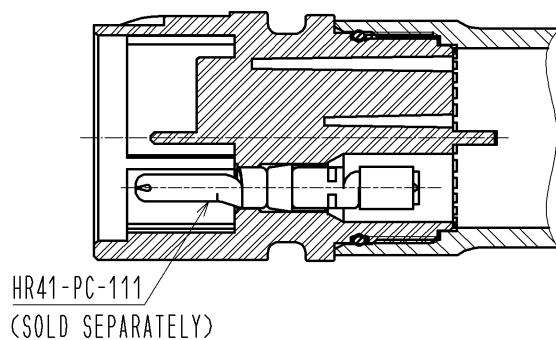
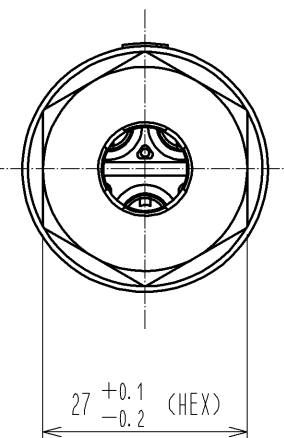
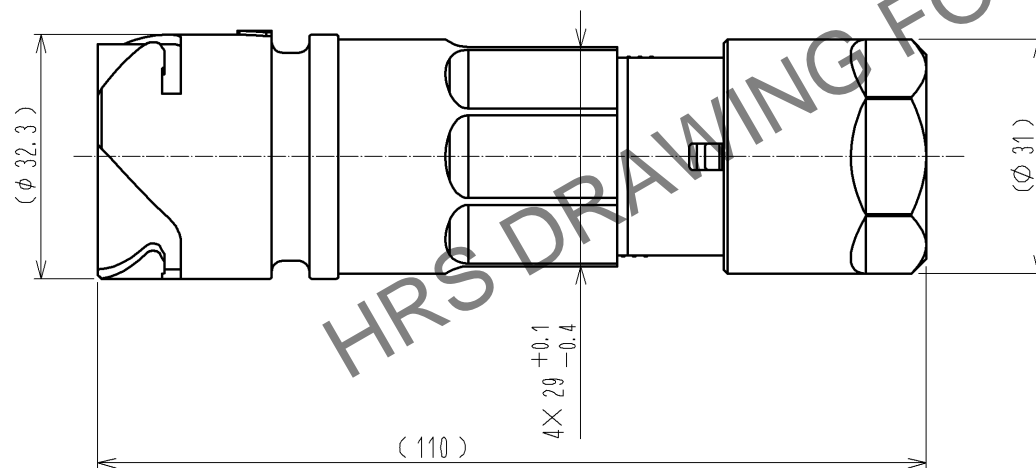
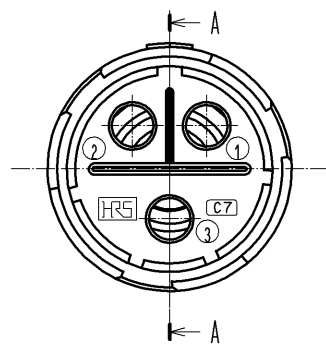


Jun.1.2024 Copyright 2024 HIROSE ELECTRIC CO., LTD. All Rights Reserved.
In case of consideration for using Automotive equipment / device which demand high reliability, kindly contact our sales window correspondents.

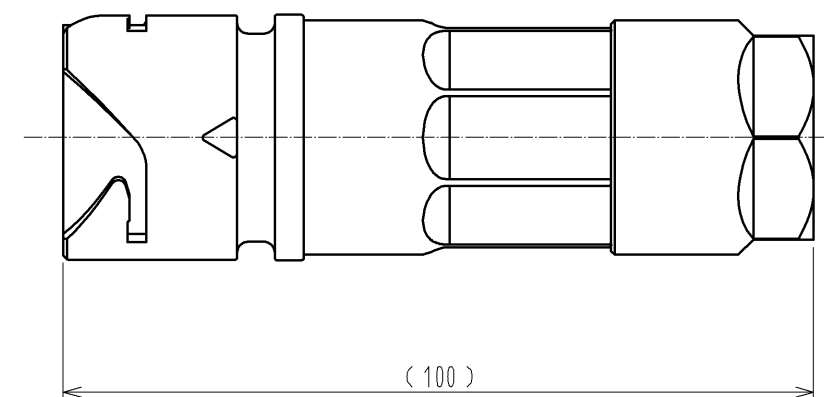
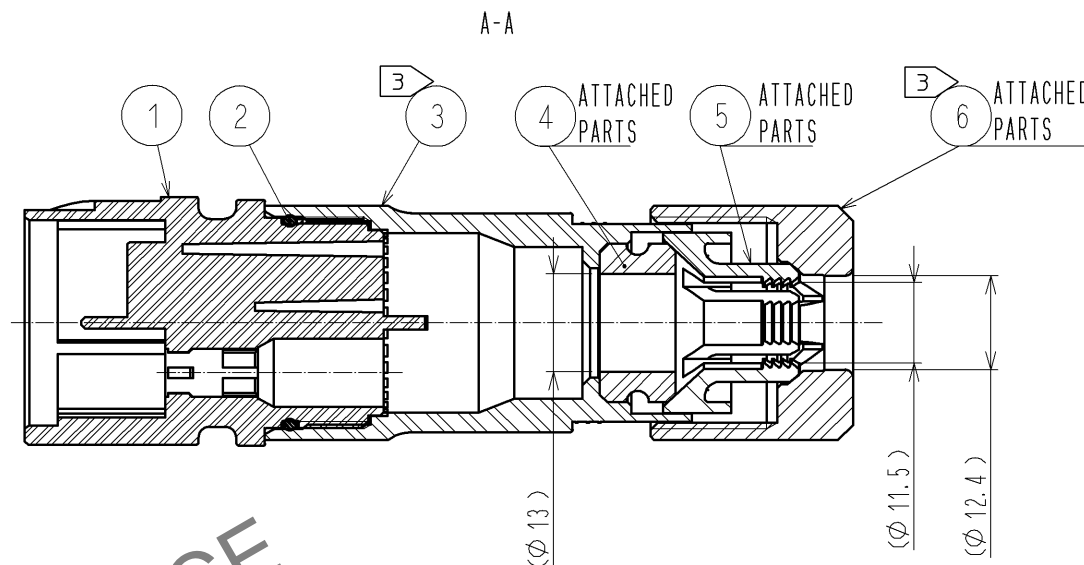
1 Fig.1 THE STATE INCORPORATE
APPLICABLE CRIMP CONTACT.



MAIN GUIDE POSITION MARKING



5 Fig.2 THE APPEARANCE AFTER ASSEMBLY.



- NOTES
- Fig.1 SHOWS THE STATE INCORPORATE APPLICABLE CRIMP CONTACT.
APPLICABLE CRIMP CONTACT : HR41-PC-111
 - APPLICABLE CRIMP CONTACT EXTRACTION TOOL : HR41-TP
 - THE RECOMMENDED TIGHTENING TORQUE OF REF. NO. ③ AND ⑥ TO BE 5 TO 5.5N・m
THE ADHESIVE TOR PREVENTION OF LOOSENESS IS NOT NECESSARY IN THE FIRST TIME.
LOCTITE 263, LOCPRIMER 7649, HENKEL JAPAN IS RECOMMENDED TO PREVENT REF. NO. ①, ③ FROM LOOSING. AFTER THE SECOND TIME.
 - ROTATION EXAMPLES ARE SHOWN FOR REF.NO. ③ AND ⑥.
 - Fig.2 SHOWS THE APPEARANCE AFTER ASSEMBLY.
 - THE CABLE PULL AND TWISTING STRENGTH AND OTHER CHARACTERISTICS MAY DIFFER, DEPENDING ON THE CABLE STRUCTURE.
PLEASE CONFIRM BEFORE THE USE.
 - THE ASSEMBLY OF THIS PRODUCT APPLIES TO THE MANUAL ETAD-C0298.

3	POLYAMIDE	(BLACK) UL94V-0	6	POLYAMIDE	(BLACK) UL94V-0
2	SILICONE RUBBER	(RED)	5	POLYAMIDE	(WHITE) UL94V-0
1	POLYAMIDE	(BLACK) UL94V-0	4	SILICONE RUBBER	(RED)
NO.	MATERIAL	FINISH . REMARKS	NO.	MATERIAL	FINISH . REMARKS
UNITS mm		SCALE 1 : 1	COUNT		DESCRIPTION OF REVISIONS
DESIGNED		CHECKED		DATE	
APPROVED : SU. OBARA		13. 03. 14		DRAWING NO.	
CHECKED : HY. KOBAYASHI		13. 03. 14		PART NO.	
DESIGNED : TY. SUZUKI		13. 03. 14		CODE NO.	
DRAWN : KN. IKEHARA		13. 03. 14		CL141-0017-7-00	
HRS		HIROSE ELECTRIC CO., LTD.		EDC3-117998-00	
				HR41-25WBJB-3PC	
				1/1	