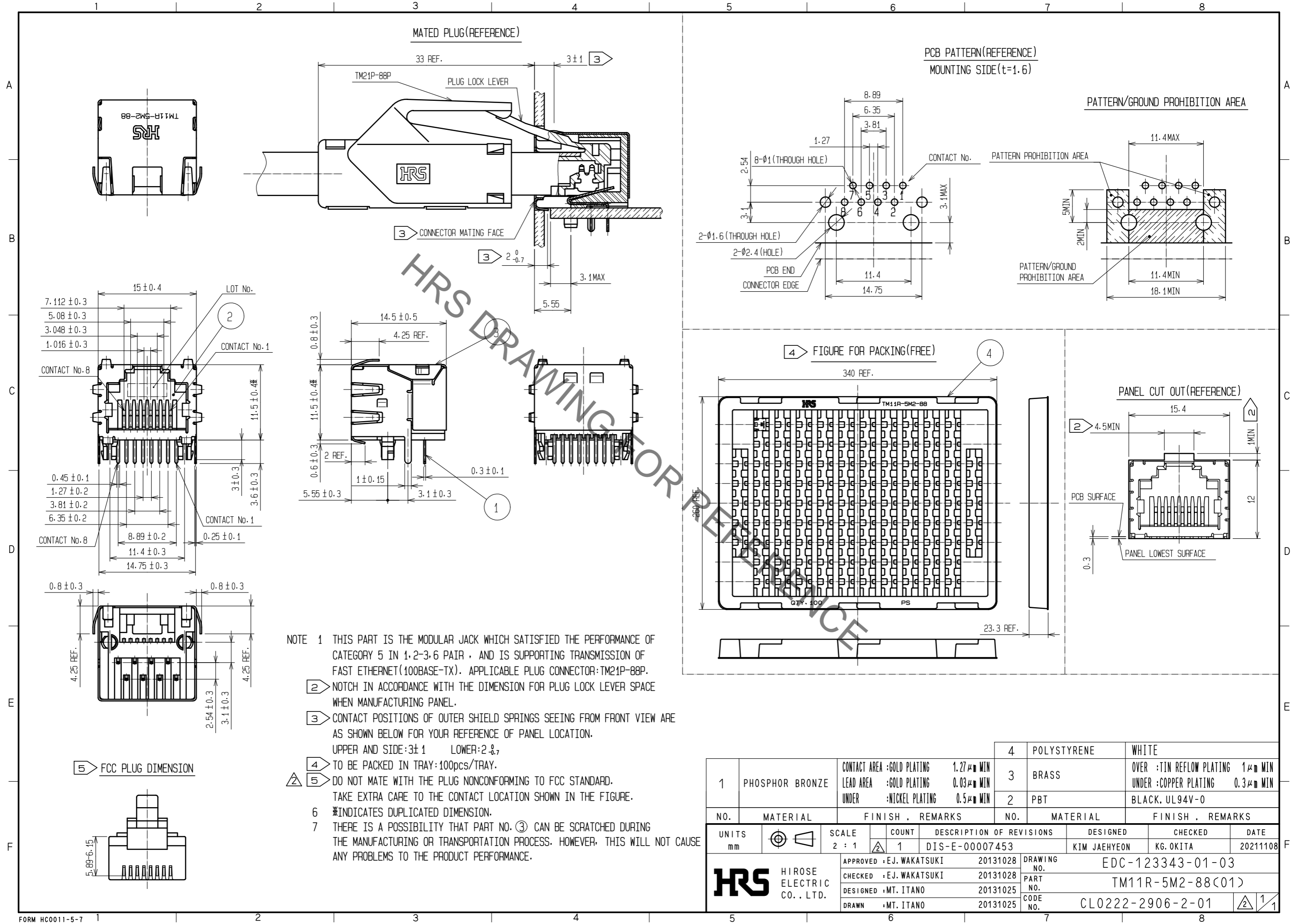


Sep.1.2022 Copyright 2022 HIROSE ELECTRIC CO., LTD. All Rights Reserved.
In case of consideration for using Automotive equipment / device which demand high reliability, kindly contact our sales window correspondents.



NOTE 1 THIS PART IS THE MODULAR JACK WHICH SATISFIED THE PERFORMANCE OF CATEGORY 5 IN 1,2-3,6 PAIR , AND IS SUPPORTING TRANSMISSION OF FAST ETHERNET(100BASE-TX). APPLICABLE PLUG CONNECTOR:TM21P-88P.

② NOTCH IN ACCORDANCE WITH THE DIMENSION FOR PLUG LOCK LEVER SPACE WHEN MANUFACTURING PANEL.

③ CONTACT POSITIONS OF OUTER SHIELD SPRINGS SEEING FROM FRONT VIEW ARE AS SHOWN BELOW FOR YOUR REFERENCE OF PANEL LOCATION.
 UPPER AND SIDE:3 ± 1 LOWER:2 ± 1

④ TO BE PACKED IN TRAY:100PCS/TRAY.

⑤ DO NOT MATE WITH THE PLUG NONCONFORMING TO FCC STANDARD.
 TAKE EXTRA CARE TO THE CONTACT LOCATION SHOWN IN THE FIGURE.

6 *INDICATES DUPLICATED DIMENSION.

7 THERE IS A POSSIBILITY THAT PART NO. ③ CAN BE SCRATCHED DURING THE MANUFACTURING OR TRANSPORTATION PROCESS. HOWEVER, THIS WILL NOT CAUSE ANY PROBLEMS TO THE PRODUCT PERFORMANCE.

1	PHOSPHOR BRONZE	CONTACT AREA :GOLD PLATING 1.27 μm MIN LEAD AREA :GOLD PLATING 0.03 μm MIN UNDER :NICKEL PLATING 0.5 μm MIN	4	POLYSTYRENE	WHITE
3	BRASS		2	PBT	BLACK, UL94V-0
NO. MATERIAL FINISH . REMARKS		NO. MATERIAL FINISH . REMARKS			
UNITS mm	SCALE 2 : 1	COUNT 1	DESCRIPTION OF REVISIONS DIS-E-00007453	DESIGNED KIM JAEHYEON	CHECKED KG. OKITA
APPROVED :EJ. WAKATSUKI 20131028		DRAWING NO. EDC-123343-01-03			
CHECKED :EJ. WAKATSUKI 20131028		PART NO. TM11R-5M2-88(01)			
DESIGNED :MT. ITANO 20131025		CODE NO. CL0222-2906-2-01			
DRAWN :MT. ITANO 20131025				1/1	