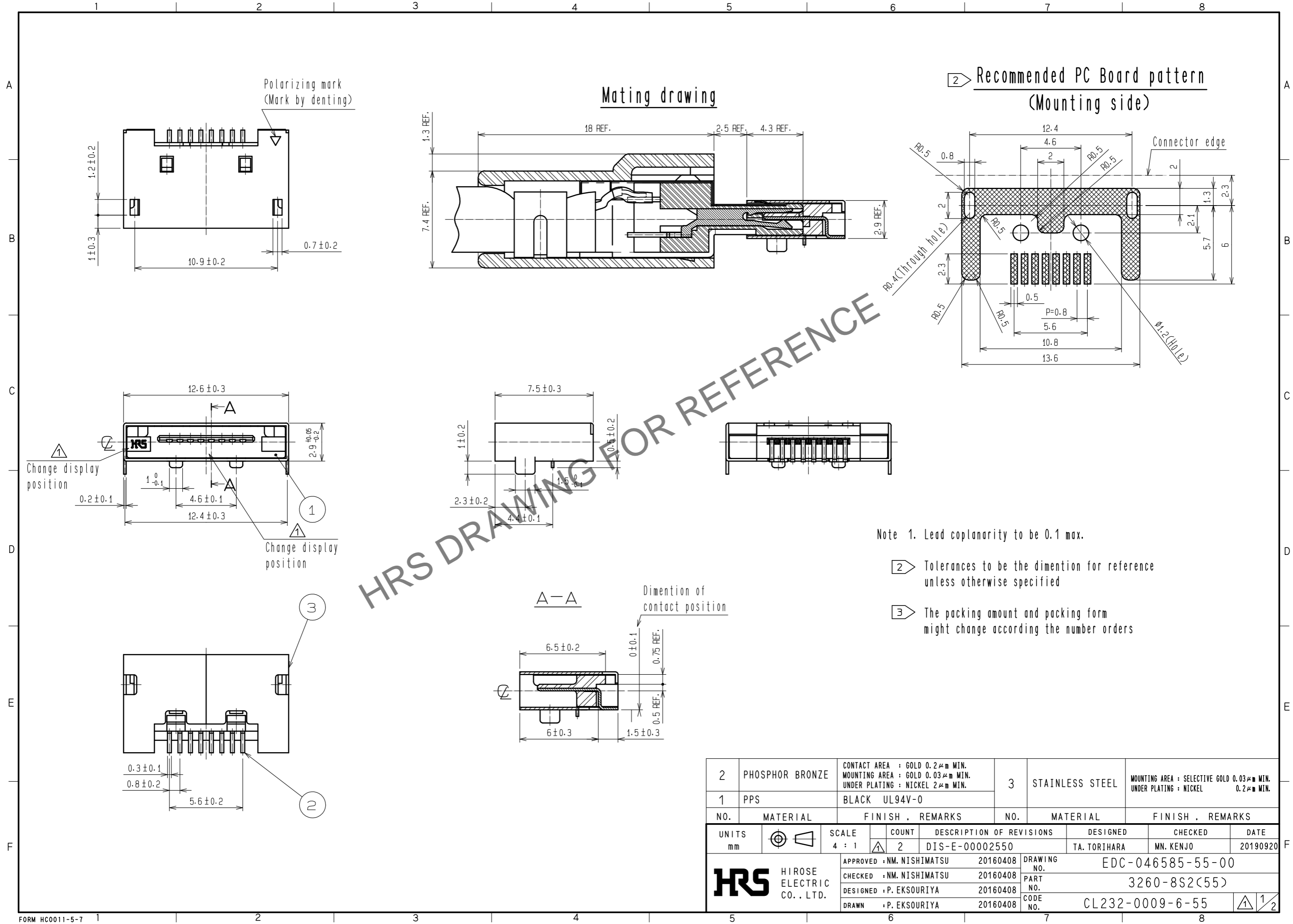


Apr.1.2025 Copyright 2025 HIROSE ELECTRIC CO., LTD. All Rights Reserved.  
 In case of consideration for using Automotive equipment / device which demand high reliability, kindly contact our sales window correspondents.



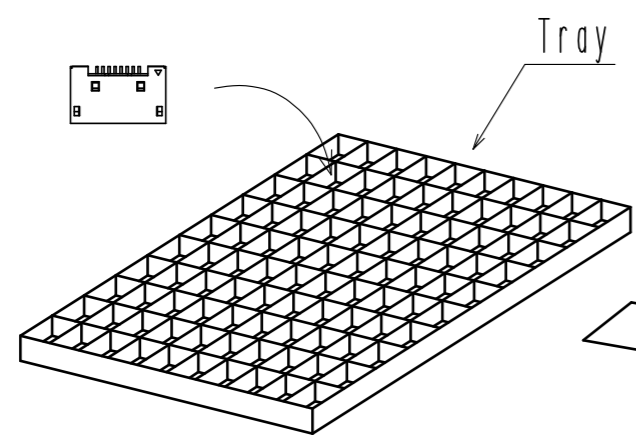
HRS DRAWING FOR REFERENCE

2	PHOSPHOR BRONZE	CONTACT AREA : GOLD 0.2 μm MIN. MOUNTING AREA : GOLD 0.03 μm MIN. UNDER PLATING : NICKEL 2 μm MIN.	3	STAINLESS STEEL	MOUNTING AREA : SELECTIVE GOLD 0.03 μm MIN. UNDER PLATING : NICKEL 0.2 μm MIN.
1	PPS	BLACK UL94V-0			
NO.	MATERIAL	FINISH . REMARKS	NO.	MATERIAL	FINISH . REMARKS
UNITS		SCALE	COUNT	DESCRIPTION OF REVISIONS	
mm		4 : 1	2	DIS-E-00002550	
<b>HRS</b> HIROSE ELECTRIC CO., LTD.		APPROVED : NM. NISHIMATSU 20160408	DRAWING NO. EDC-046585-55-00		DESIGNED TA. TORIHARA
		CHECKED : NM. NISHIMATSU 20160408	PART NO. 3260-8S2(55)		CHECKED MN. KENJO
		DESIGNED : P. EKSOURIYA 20160408	CODE NO. CL232-0009-6-55		DATE 20190920
		DRAWN : P. EKSOURIYA 20160408			

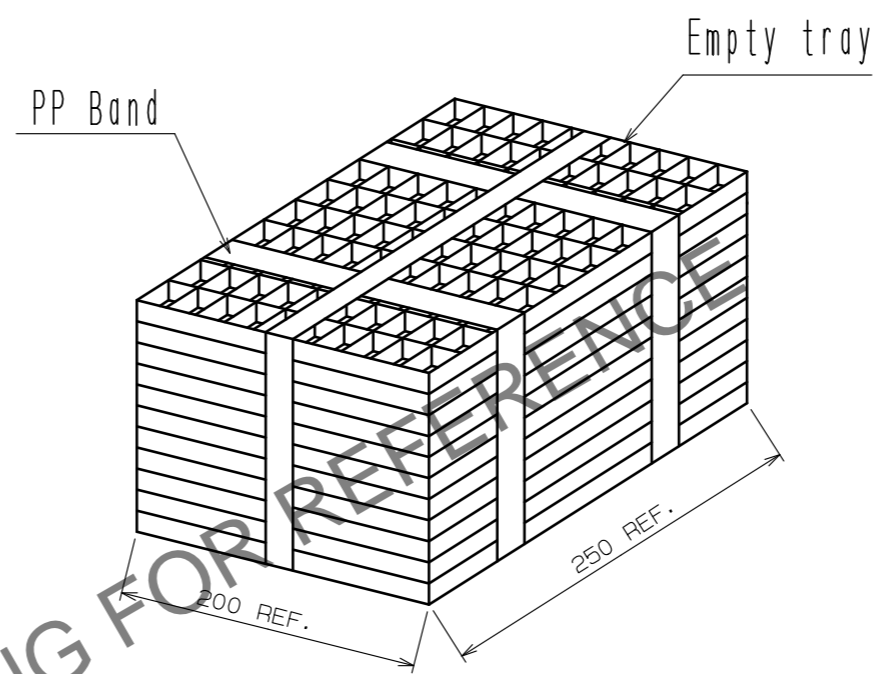
Apr.1.2025 Copyright 2025 HIROSE ELECTRIC CO., LTD. All Rights Reserved.  
In case of consideration for using Automotive equipment / device which demand high reliability, kindly contact our sales window correspondents.

### 3 Packaging

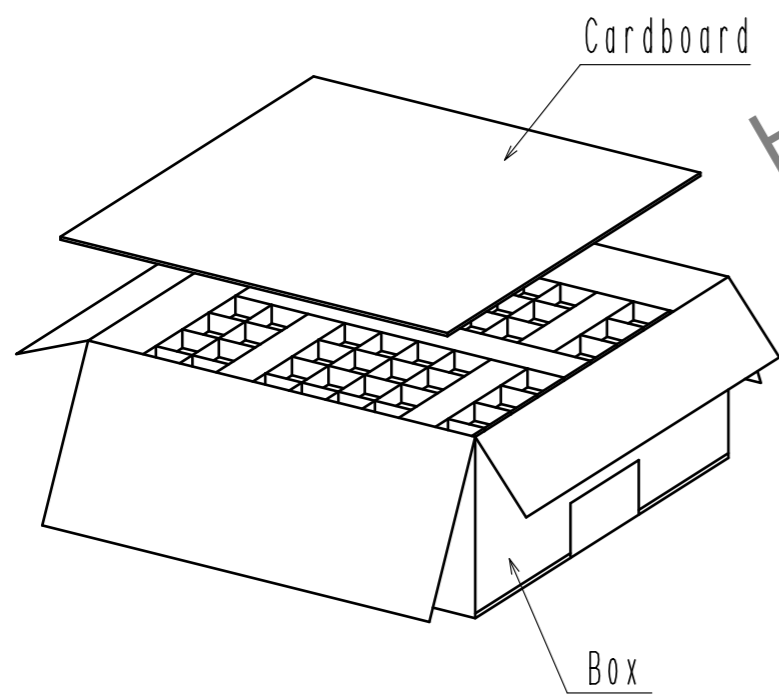
1. The connector is put in a tray in 100 PCS.



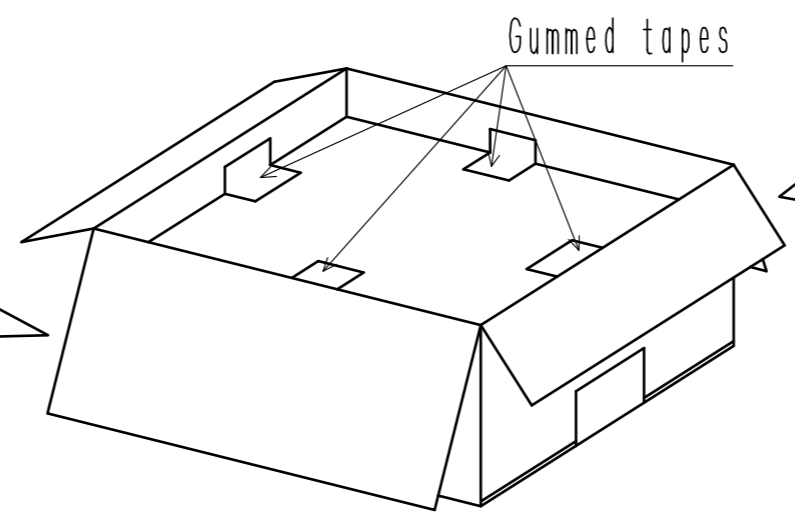
2. 10 trays of the connector are piled up aternately. Connector quality 1000 PCS.



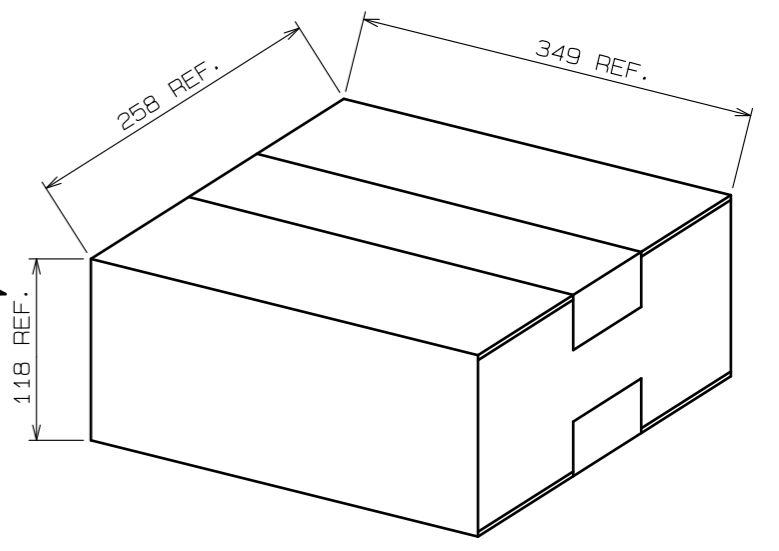
3. Piled up a pack of trays which banded in a box. Cover the top with the cardboard.



4. Fasten up the box and the cardboards with gummed tapes.



5. Close the box and fasten up with gummed tapes.



HRS DRAWING FOR REFERENCE

<b>HRS</b>	DRAWING NO.	EDC-046585-55-00
	PART NO.	3260-8S2(55)
	CODE NO.	CL232-0009-6-55
		2/2