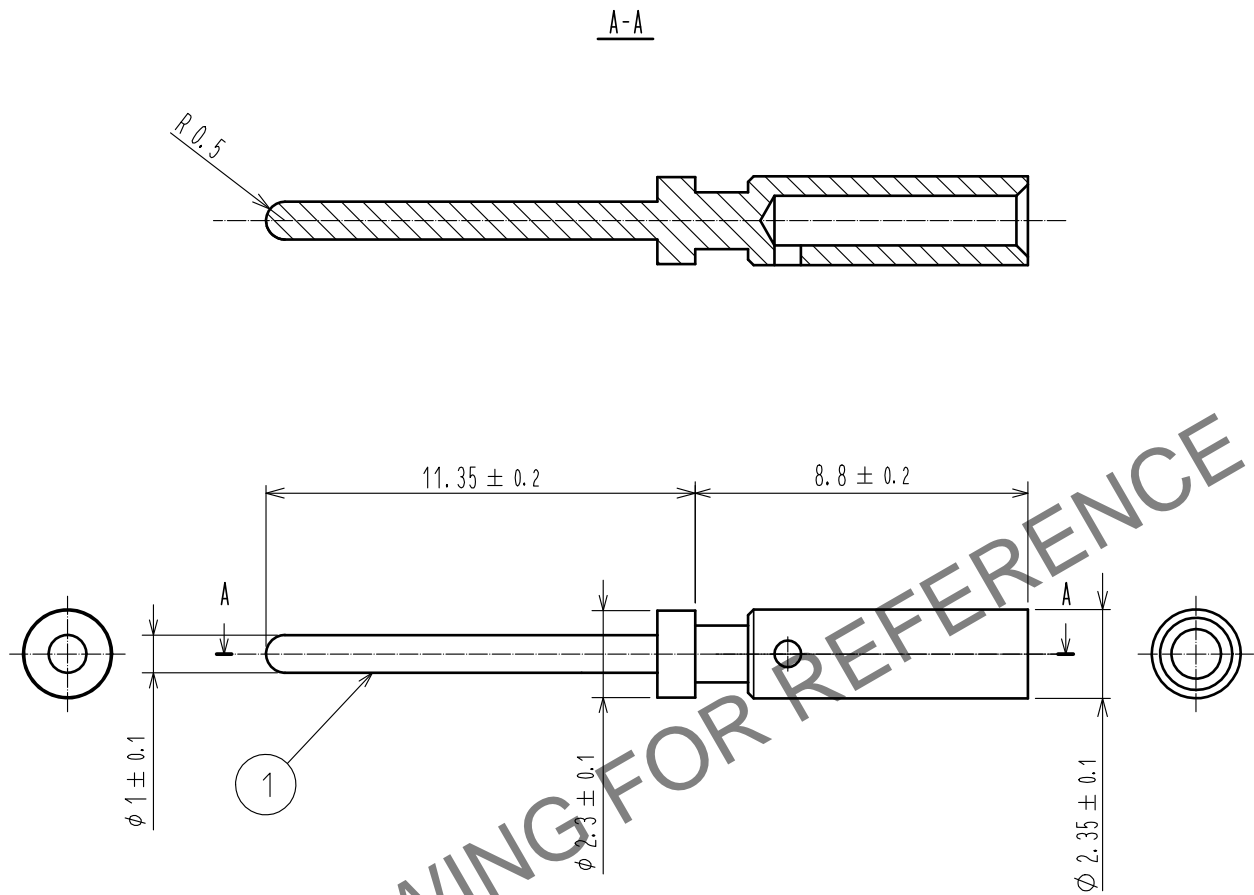


May.1.2024 Copyright 2024 HIROSE ELECTRIC CO., LTD. All Rights Reserved.
In case of consideration for using Automotive equipment / device which demand high reliability, kindly contact our sales window correspondents.



- Note 1. This product will be inserted into the TJ50L-4P-UNIT of the TJ*L series.
2. This product is supplied in bags of 100 pcs each.
3. Please crimp the applicable cable (AWG 18、0.75 sq) with the crimping tool (MIL-C-22520/1-01). The locator which will be attached to the crimping tool is TJ50L/CRMD-18LCT (CL250-0041-0 00). For further details regarding the wiring and assembly procedure please refer to the ETAD-E3078 instruction manual.

1	Brass	Gold plating, contact area 0.76 μ m min. crimping area 0.1 μ m min.				
NO.	MATERIAL	FINISH . REMARKS		NO.	MATERIAL	FINISH . REMARKS
UNITS mm		SCALE 5 : 1	COUNT 	DESCRIPTION OF REVISIONS		DESIGNED
HIROSE ELECTRIC CO., LTD.		APPROVED	RI. TAKAYASU	16. 07. 06	DRAWING NO.	EDC4-128280-00
		CHECKED	AH. KODAMA	16. 07. 05	PART NO.	TJ50L-18PCA
		DESIGNED	TA. TORIHARA	16. 07. 05	CODE NO.	CL236-3216-2-00
		DRAWN	TA. TORIHARA	16. 07. 05		
						1/1