

NOTE 1 Do not apply any excessive stress to the cable assembly position.

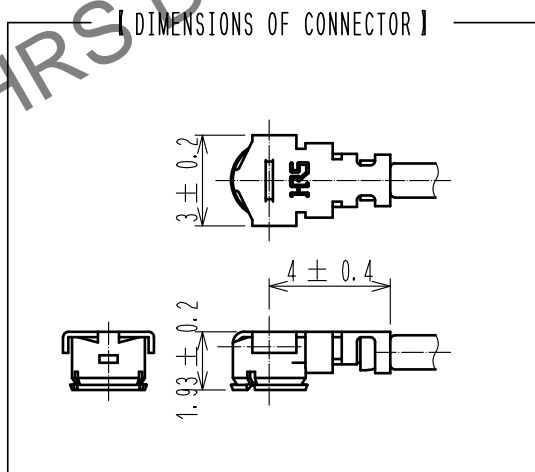
2 We indicate the length of the harness on the last of product name, 'L' part.

Tolerance for [L]

Length L [mm]	Tolerance [mm]
$50 \leq L \leq 200$	± 4
$200 < L \leq 500$	± 8
$500 < L \leq 1000$	± 12
$1000 < L$	$\pm 1.5\%$

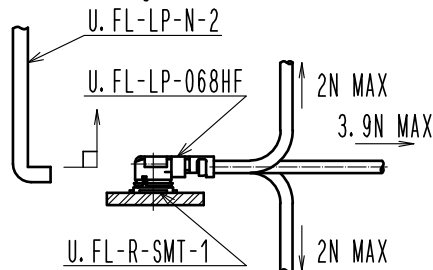
Part No.	Cable color
~068N1T~	GRAY
~068N2T~	BLACK
~068N3T~	WHITE

- Connector rotation angle is within ± 45 degree from the above image. For long length in the case of $L > 500$, the angle is optional.
- Specifications are subject to change without notice.



【 PRECAUTIONS FOR HANDLING 】

- Connector insertion and extraction
 - Connector shall be extracted vertically by specialised extraction JIG.
Part No. : U.FL-LP-N-2 (CL Code: CL331-0494-5)
Never hold the cable when extracting the cable because it damages the connector.
 - Insert the connector as perpendicularly to the mating surface as possible by aligning the mating axes of both connectors. Do not excessively slant the connectors when inserting.
- Allowable loads on the cable after the connectors are mated.
The figures below show the maximum allowable loads on the cable. Do not apply loads exceeding these values to the cable.



2	U.FL-LP-068HF	CL331-0566-4-00	3	RF-MF50161	NISSEI ELECTRIC CO., LTD.		
1	HRM-200-066PJ4BN(40)	CL323-0796-0-40					
No.	PART NO.	CODE NO.	No.	PART NO.	MANUFACTURER		
UNITS mm		SCALE FREE	COUNT	DESCRIPTION OF REVISIONS	DESIGNED	CHECKED	DATE
APPROVED : TO. KATAYAMA		20200623	DRAWING NO.				
CHECKED : TO. KATAYAMA		20200623	PART NO.				
DESIGNED : MK. INOUE		20200623	CODE NO.				
DRAWN : MK. INOUE		20200623	HPJ-UFLHF6-068N*T-ALRS				
FORM HC0011-5-51		2	3	4	1/1		