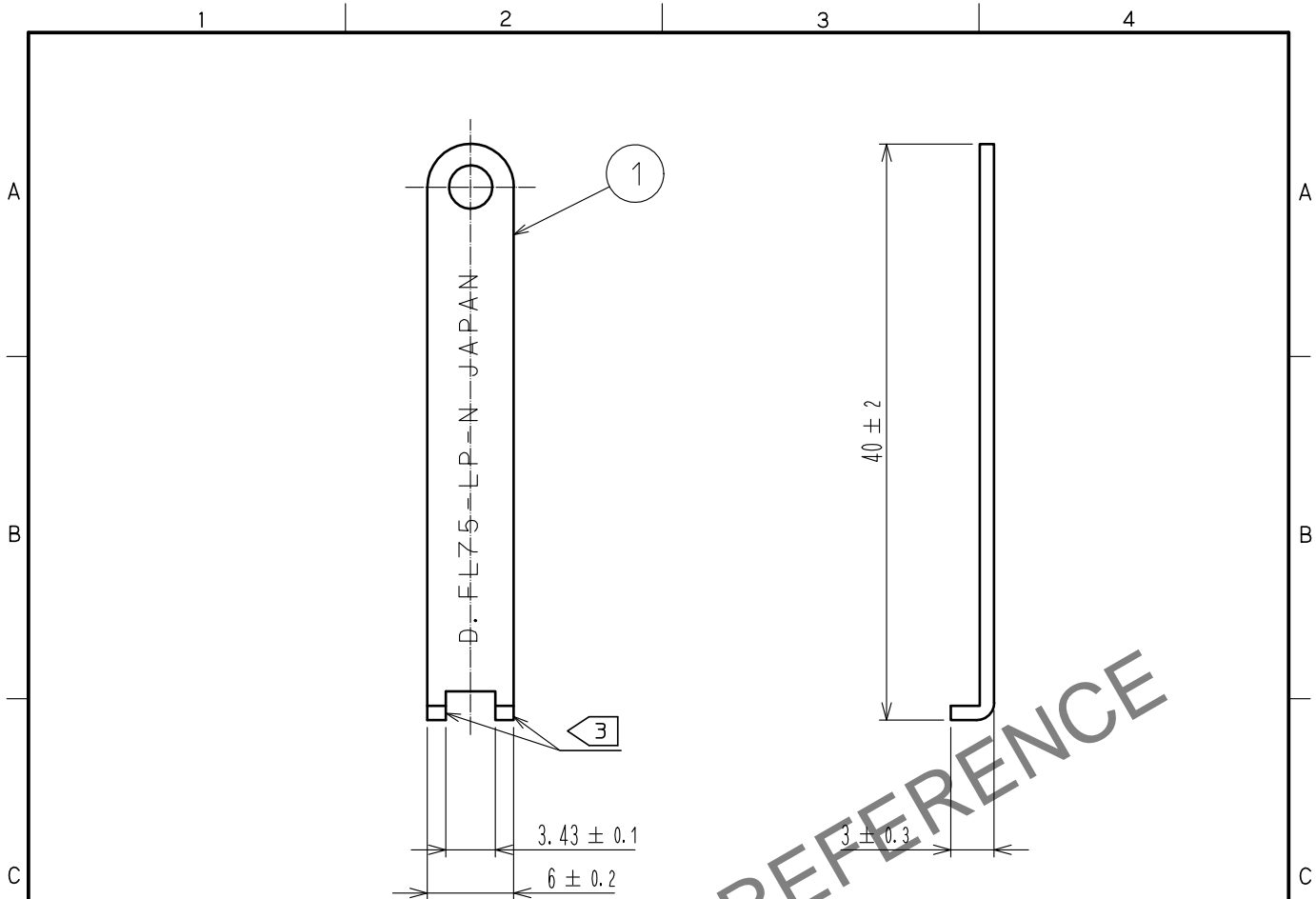


Apr.1.2024 Copyright 2024 HIROSE ELECTRIC CO., LTD. All Rights Reserved.  
In case of consideration for using Automotive equipment / device which demand high reliability, kindly contact our sales window correspondents.

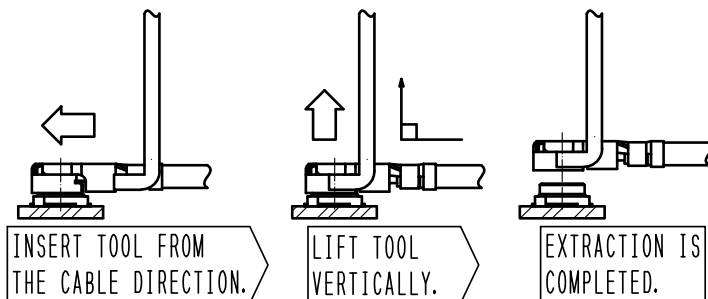


NOTES 1. THIS TOOL IS FOR WITHDRAWING D.FL75 CONNECTOR.

2 EXTRACT THE PLUG AS SHOWN IN THE RIGHT BOTTOM FIGURE. TAKE A CAUTION NOT TO PULL AT THE CABLE. PULLING AT THE CABLE CAN DAMAGE THE CONNECTORS.

3 THE TOOL TIPS ARE STRUCTURALLY VULNERABLE TO DEFORMATION. THE TIPS ARE LIKELY TO BE DEFORMED WHEN THE TOOL IS DROPPED. HANDLE CAREFULLY.

【 HOW TO EXTRACT PLUG 】 2



1	STAINLESS STEEL	PASSIVATE							
NO.	MATERIAL	FINISH .	REMARKS	NO.	MATERIAL	FINISH .	REMARKS		
UNITS mm		SCALE 2 : 1	COUNT 	DESCRIPTION OF REVISIONS			DESIGNED	CHECKED	DATE
HIROSE ELECTRIC CO., LTD.		APPROVED	・NK. NINOMIYA	20220317	DRAWING NO.	EDC-380866-00-00			
		CHECKED	・NK. NINOMIYA	20220317	PART NO.	D. FL75-LP-N			
		DESIGNED	・MT. KANEKO	20220316	CODE NO.	CL0331-0080-0-00			
		DRAWN	・YK. MITSUISHI	20220316					