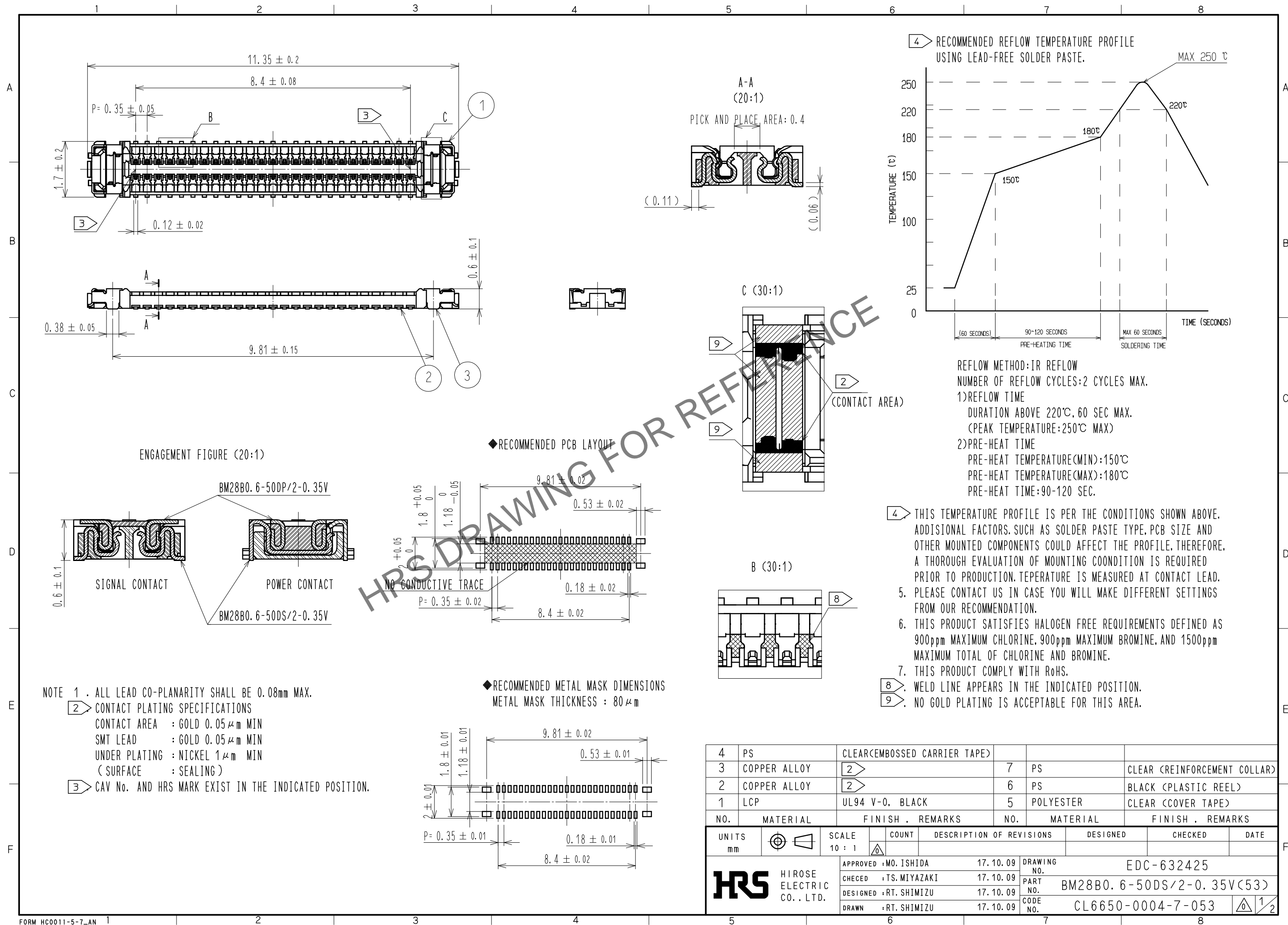


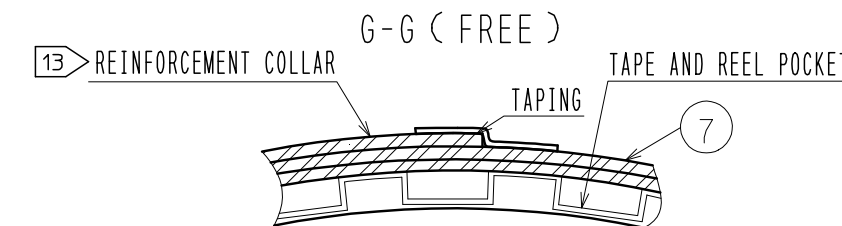
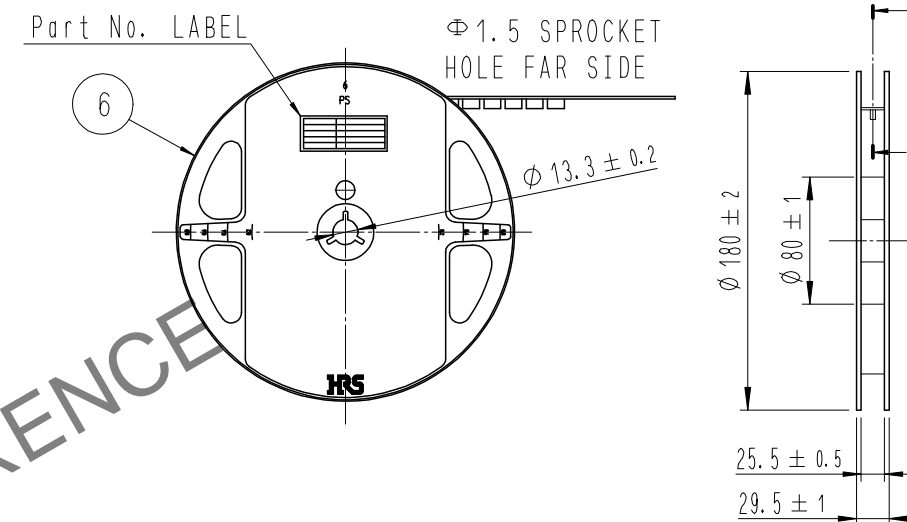
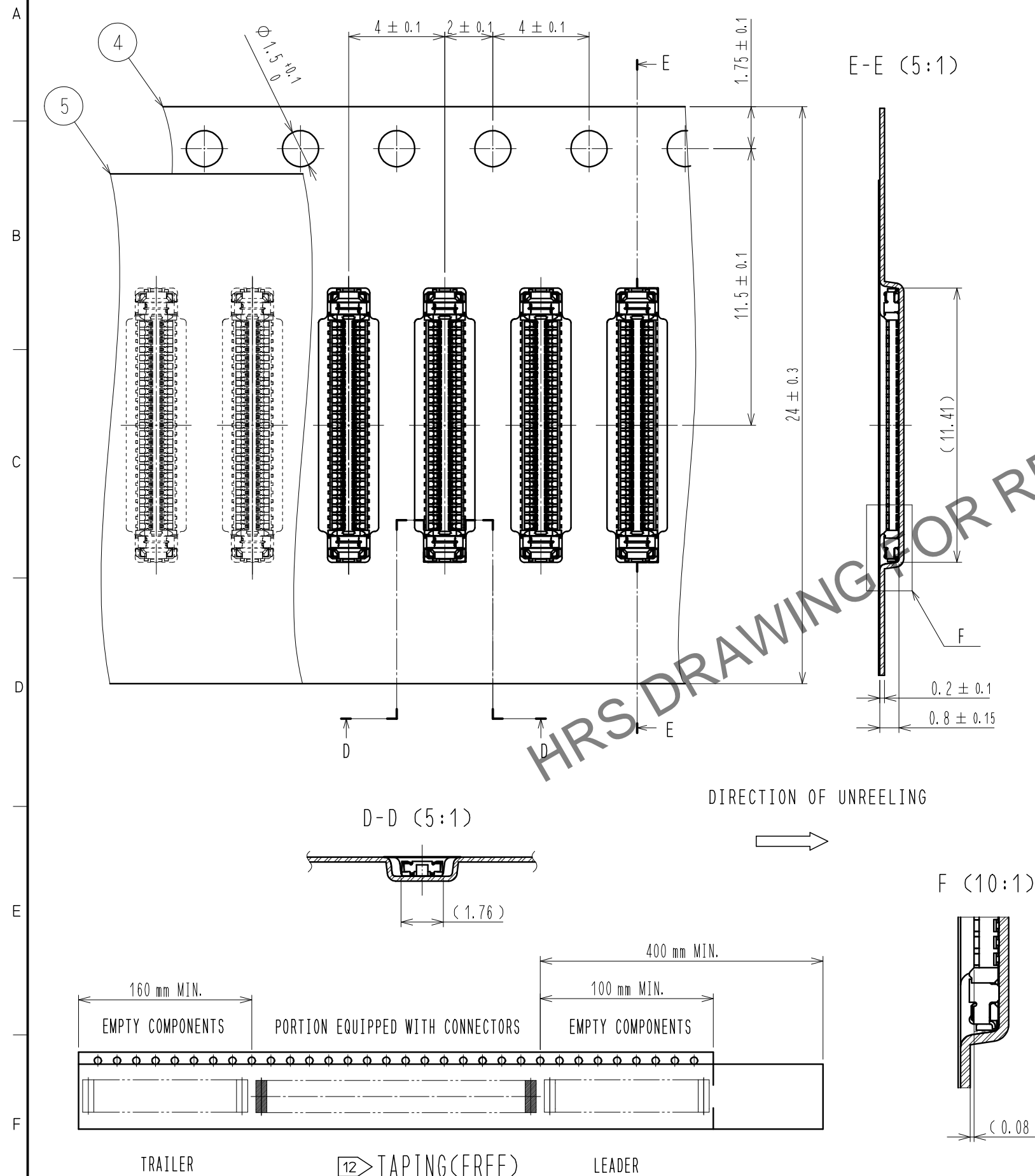
Jun.1.2024 Copyright 2024 HIROSE ELECTRIC CO., LTD. All Rights Reserved.
In case of consideration for using Automotive equipment / device which demand high reliability, kindly contact our sales window correspondents.



Jun.1.2024 Copyright 2024 HIROSE ELECTRIC CO., LTD. All Rights Reserved.
In case of consideration for using Automotive equipment / device which demand high reliability, kindly contact our sales window correspondents.

EMBOSSED CARRIER TAPE PACKAGING (5:1)

STYLE AND DIMENSION OF REEL (FREE)



DETAIL OF PART NO. LABEL

| | |
|-------|----------------|
| 製造年月日 | ** ** * |
| 製品コード | CL6650-****-** |
| 製品名 | BM28B0.6-** |
| 数量 | 1,000 |
| 納入者 | ヒロセ電機(株) |

DATA OF MANUFACTURED
CODE NO.
PART NO.
QUANTITY
SUPPLIER

10. PER REEL 1,000 CONNECTORS.
11. THE DIMENSIONS IN PARENTHESES ARE FOR REFERENCE.
12. REFER TO JIS C 0806, IEC 60286-3(PACKAGING OF COMPONENTS FOR AUTOMATIC HANDLING)
13. AFTER PACKAGING, ROLL 2 METERS OF THE REINFORCEMENT COLLAR TO OUTER CIRCUMFERENCE OF TAPE AND REEL POCKET. AND TAPE DOWN AT THE END THE COLLAR.

| | | |
|-----|-------------|---------------------------|
| HRS | DRAWING NO. | EDC3-632425 |
| | PART NO. | BM28B0.6-50DS/2-0.35V(53) |
| | CODE NO. | CL6650-0004-7-053 |
| | | \triangle 2/2 |