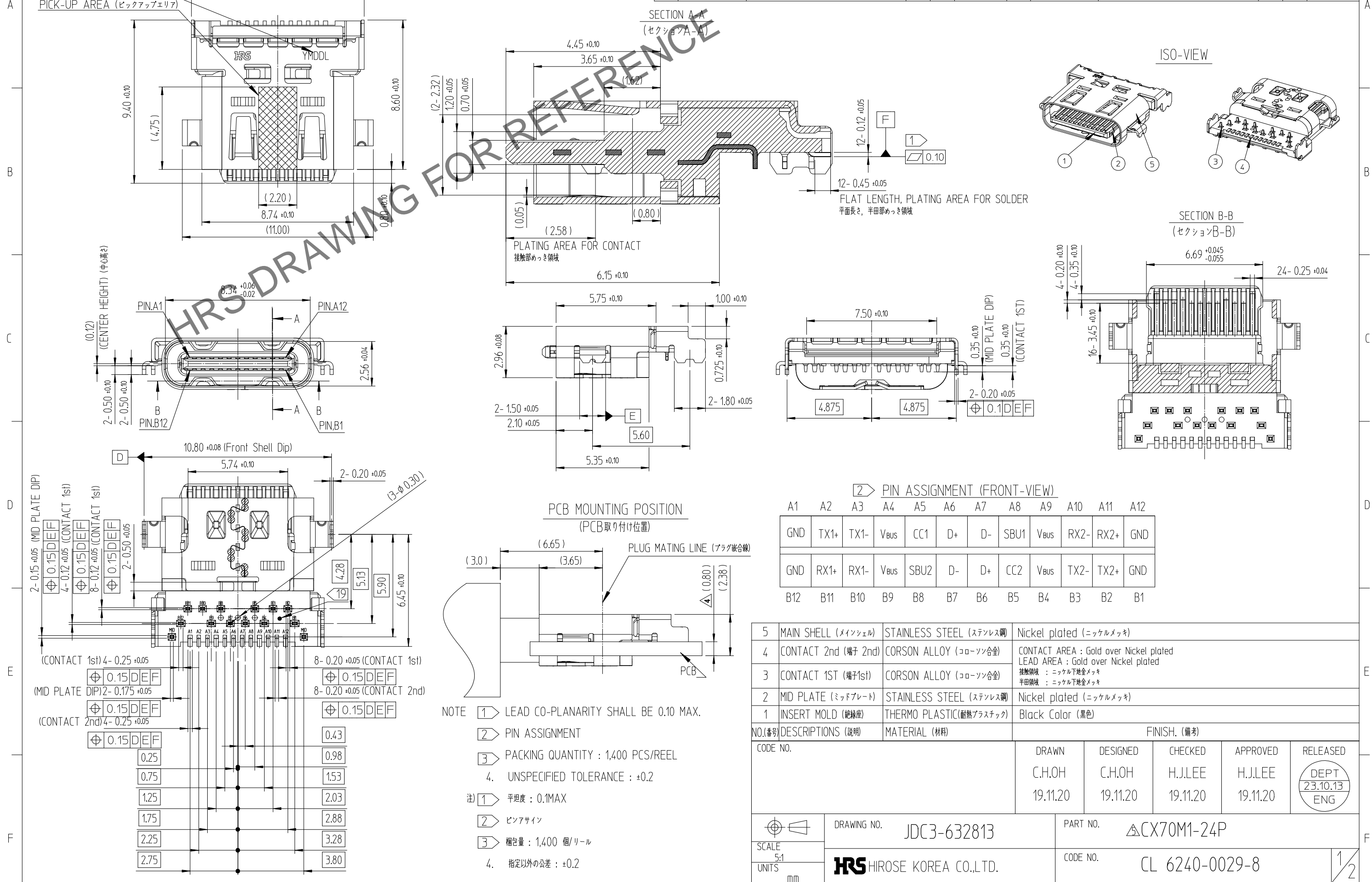


Oct.1.2024 Copyright 2024 HIROSE ELECTRIC CO., LTD. All Rights Reserved.
本製品を車載用途などの高い信頼性が求められる機器にご使用の場合は、弊社までお問合せ下さい。

改正 REV.	変更履歴 NO. ECA NO.	訂正事項 DESCRIPTION OF REVISIONS	擔當 B	檢圖 Y	年月日 DATE	改正 REV.	変更履歴 NO. ECA NO.	訂正事項 DESCRIPTION OF REVISIONS	擔當 B	檢圖 Y	年月日 DATE
△	-	RE-2-1450	OCH	LHJ	20.04.06	△	2	RE-2-2141	KYJ	LHJ	23.02.08
△	-	Revised	KYI	LHJ	22.03.07	△	2	RE-2-2429	CJS	LHJ	23.10.13
△	-	RE-2-1965	KYJ	LHJ	22.09.01	△					

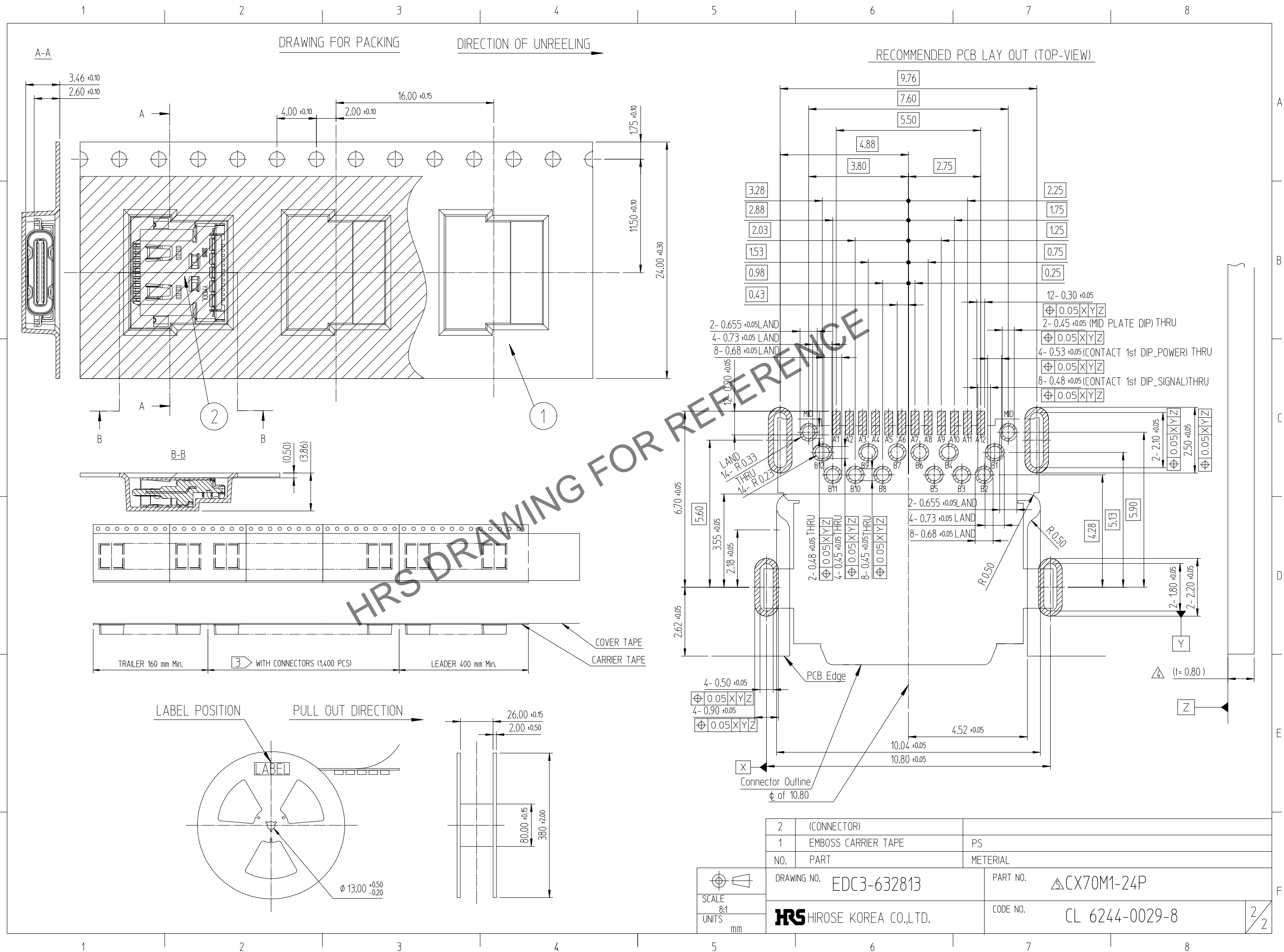


NO.(番号)	DESCRIPTIONS (説明)	MATERIAL (材料)	FINISH. (備考)
5	MAIN SHELL (メインシェル)	STAINLESS STEEL (ステンレス鋼)	Nickel plated (ニッケルメッキ)
4	CONTACT 2nd (端子 2nd)	CORSON ALLOY (コロソン合金)	CONTACT AREA : Gold over Nickel plated LEAD AREA : Gold over Nickel plated
3	CONTACT 1st (端子1st)	CORSON ALLOY (コロソン合金)	接触領域 : ニッケル下地金メッキ 半田領域 : ニッケル下地金メッキ
2	MID PLATE (ミッドプレート)	STAINLESS STEEL (ステンレス鋼)	Nickel plated (ニッケルメッキ)
1	INSERT MOLD (絶縁座)	THERMO PLASTIC(耐熱プラスチック)	Black Color (黒色)

CODE NO.	DRAWN	DESIGNED	CHECKED	APPROVED	RELEASED
	C.H.OH	C.H.OH	H.J.LEE	H.J.LEE	DEPT 23.10.13 ENG
	19.11.20	19.11.20	19.11.20	19.11.20	

DRAWING NO. JDC3-632813	PART NO. CX70M1-24P
SCALE 5:1 UNITS mm	CODE NO. CL 6240-0029-8

Oct. 1. 2024 Copyright 2024 HIROSE ELECTRIC CO., LTD. All Rights Reserved.
 本製品を車載用途などの高い信頼性が求められる機器にご使用の場合は、弊社までお問合せ下さい。



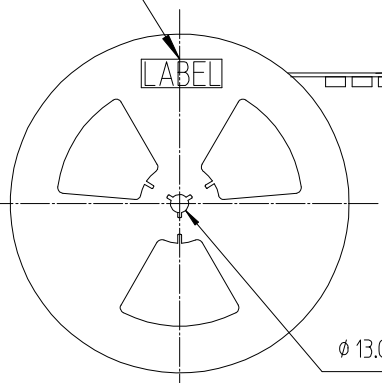
DRAWING FOR PACKING DIRECTION OF UNREELING →

RECOMMENDED PCB LAY OUT (TOP-VIEW)

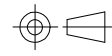
HRS DRAWING FOR REFERENCE

TRAILER 160 mm Min. WITH CONNECTORS (1,400 PCS) LEADER 400 mm Min. COVER TAPE CARRIER TAPE

LABEL POSITION PULL OUT DIRECTION →



2	(CONNECTOR)	
1	EMBOSS CARRIER TAPE	PS
NO.	PART	METERIAL

 SCALE 8:1 UNITS mm	DRAWING NO. EDC3-632813	PART NO. CX70M1-24P
	HRS HIROSE KOREA CO.,LTD.	CODE NO. CL 6244-0029-8