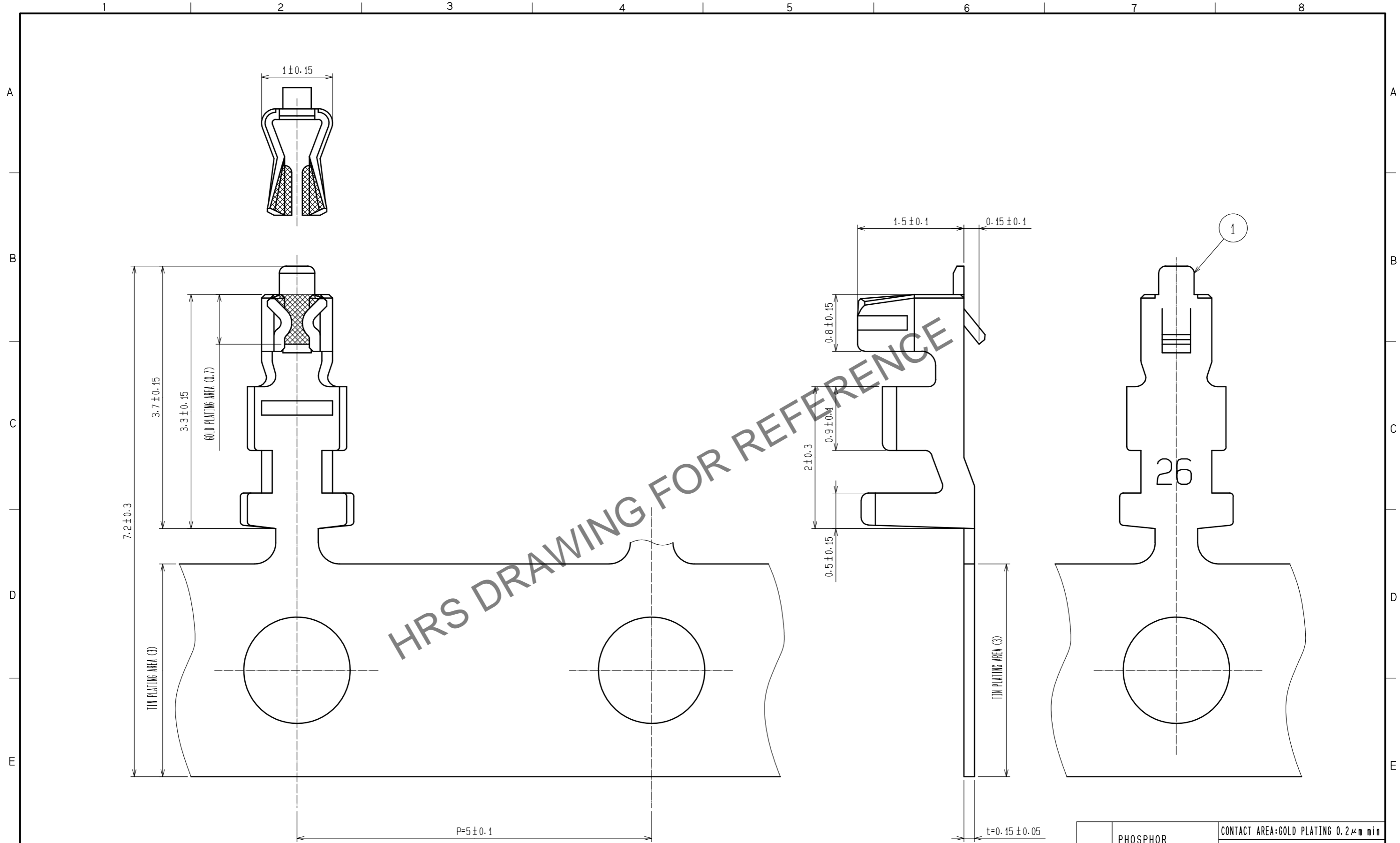


Dec.1.2024 Copyright 2024 HIROSE ELECTRIC CO., LTD. All Rights Reserved.  
 In case of consideration for using Automotive equipment / device which demand high reliability, kindly contact our sales window correspondents.



NOTES 1: APPLICABLE WIRE : 26 - 30 AWG  
 2: 1 REEL 10000 CONTACTS  
 △ OUTER DIAMETER :  $\phi 0.56 - \phi 1.0$  mm

1	PHOSPHOR BRONZE	CONTACT AREA: GOLD PLATING 0.2 $\mu$ m min CARRIER AREA: TIN PLATING 1 $\mu$ m min OTHERS: NICKEL PLATING 0.5 $\mu$ m min
---	-----------------	---

NO.	MATERIAL	FINISH . REMARKS	NO.	MATERIAL	FINISH . REMARKS
1	PHOSPHOR BRONZE	CONTACT AREA: GOLD PLATING 0.2 $\mu$ m min CARRIER AREA: TIN PLATING 1 $\mu$ m min OTHERS: NICKEL PLATING 0.5 $\mu$ m min			

UNITS	SCALE	COUNT	DESCRIPTION OF REVISIONS	DESIGNED	CHECKED	DATE
mm	20: 1	1	DIS-H-00004809	HT. SATO	SZ. ONO	20190425

<b>HRS</b> HIROSE ELECTRIC CO., LTD.	APPROVED : TS. SAKATA	20090915	DRAWING NO.	EDC-071220-04-06
	CHECKED : TS. FUKUSHIMA	20090914	PART NO.	DF13-2630SCFA(04)
	DESIGNED : KT. ISHII	20090911	CODE NO.	CL536-0298-5-04
	DRAWN : YK. NAKATSU	20090909		