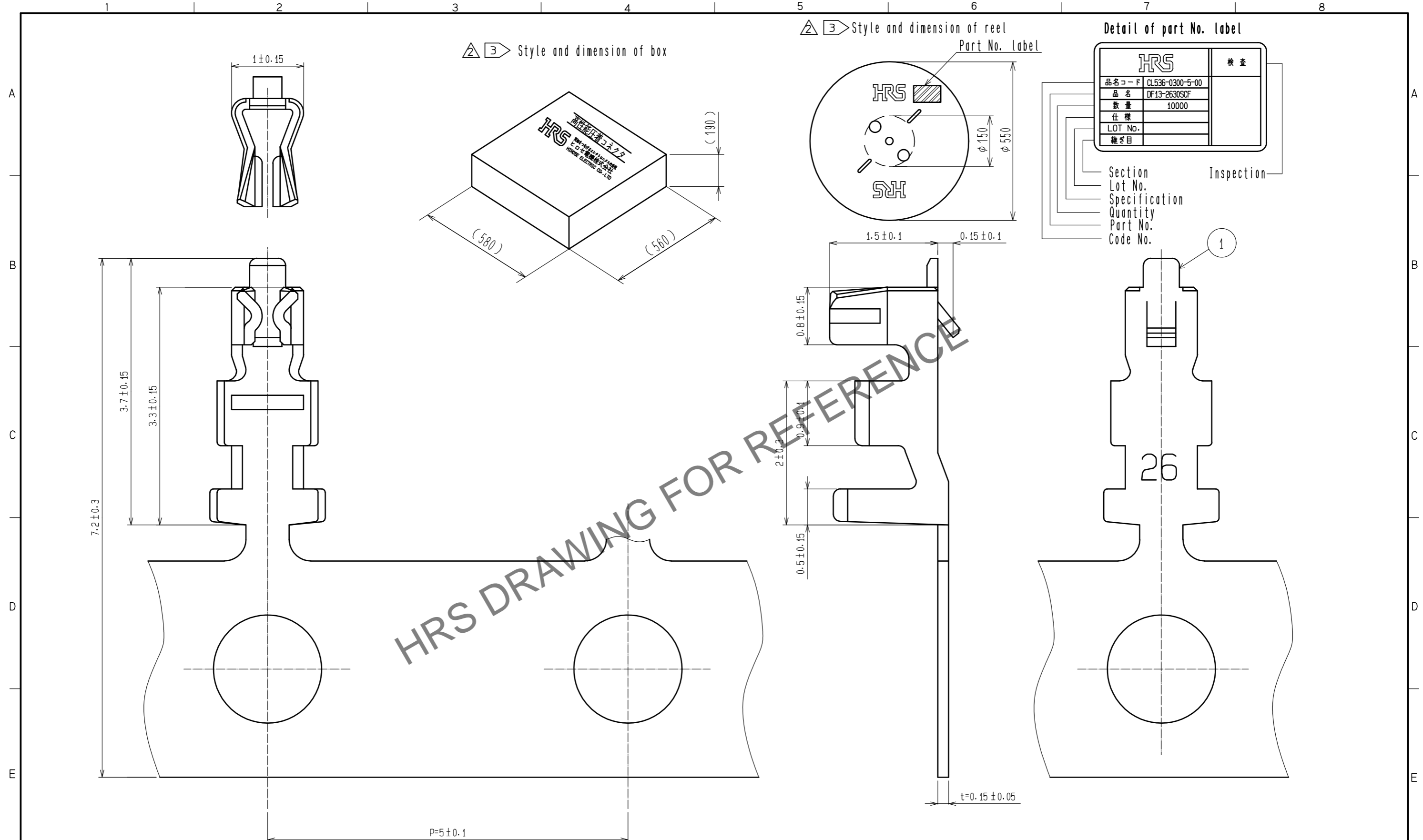


Oct.1.2024 Copyright 2024 HIROSE ELECTRIC CO., LTD. All Rights Reserved.
 In case of consideration for using Automotive equipment / device which demand high reliability, kindly contact our sales window correspondents.



- △ Note 1. Applicable wire : 26 to 30 AWG
 Outer diameter : φ0.56 to 1.0mm
2. 1 reel:10000 contacts.
- △ 3 Style of reel and box are shown in figure.
- △ 4. A maximum of 5 reels are packed up in one box.
- △ 5. Please be sure to check the form of crimping using a cable when you adjust applicator.
- △ 6. Refer to the technical specification(ATAP-H0373-00)for the packing type.
- △ 7. Refer to the crimping quality standard(ETAD-H0953-00)for the packing type.

Detail of part No. Label

HRS		検査
品名コード	CL536-0300-5-00	
品名	DF13-2630SCF	
数量	10000	
仕様		
LOT No.		
継ぎ目		

Section
 Lot No.
 Specification
 Quantity
 Part No.
 Code No.

Inspection

NO.	MATERIAL	FINISH . REMARKS	NO.	MATERIAL	FINISH . REMARKS
			1	Phosphor bronze	Tin plating 1μm min
UNITS mm		SCALE 20:1	△の数	訂正記事	設計
			8	DIS-H-00004839	検 図
					年月日
					20190513
			承認 : KJ.KATAYOSE	20050105	図番 : EDC-081857-00-00
			検 図 : TY.OMA	20050105	製品名 : DF13-2630SCF
			設計 : TS.KUMAZAWA	20050105	製品コード : CL536-0300-5-00
			製 図 : TS.KUMAZAWA	20050105	