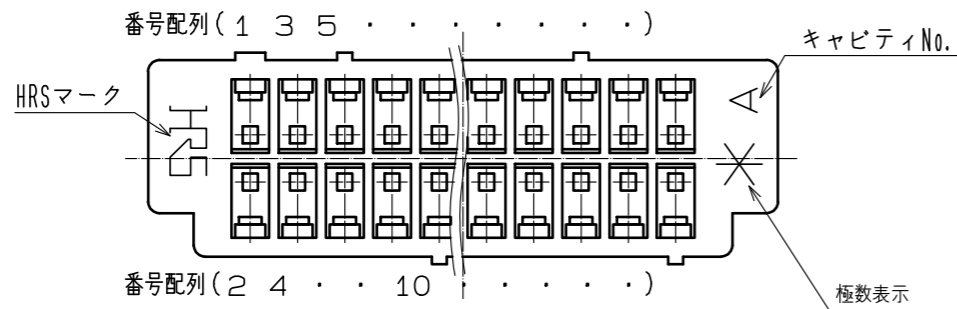
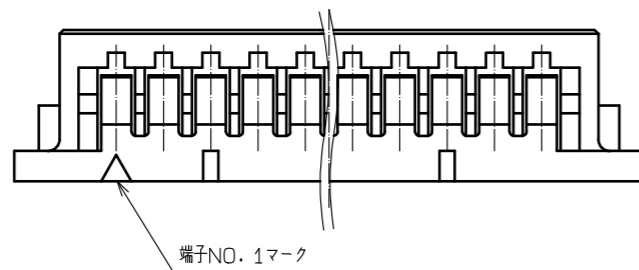
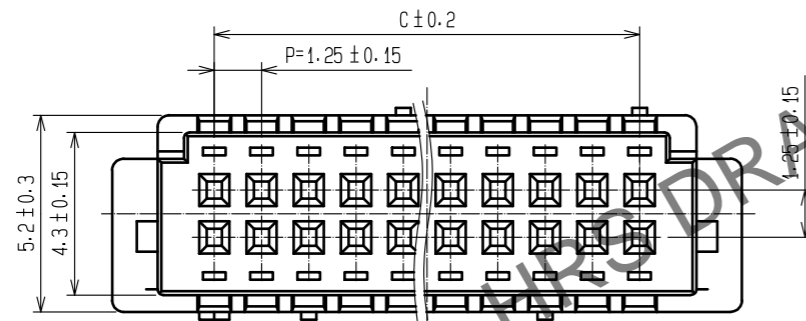
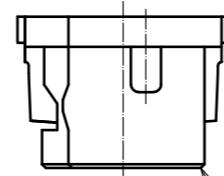
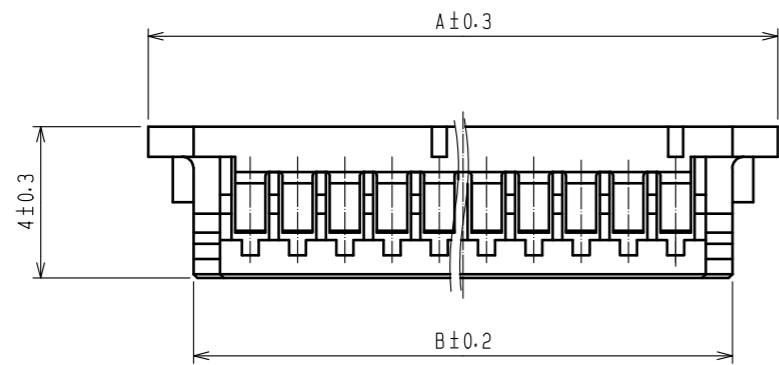


Apr.1.2024 Copyright 2024 HIROSE ELECTRIC CO.,LTD. All Rights Reserved.
 本製品を車載用途などの高い信頼性が求められる機器にご使用の場合は、弊社までお問合せ下さい。



| 製品名 | 製品コード | 極数 | A | B | C |
|---------------------|-----------------|----|-------|-------|-------|
| DF13-30DS-1.25C(10) | CL536-0560-6-10 | 30 | 22.9 | 20.5 | 17.5 |
| DF13-40DS-1.25C(10) | CL536-0565-0-10 | 40 | 29.15 | 26.75 | 23.75 |



注1 1パック100個梱包。

| NO. | MATERIAL | FINISH . REMARKS | NO. | MATERIAL | FINISH . REMARKS | | |
|--|------------------------|------------------|-------------|--------------------------|------------------|---------|------|
| | | | 1 | ポリアミド樹脂 | BEIGE . UL94V-0 | | |
| UNITS mm | | SCALE 5 : 1 | COUNT | DESCRIPTION OF REVISIONS | DESIGNED | CHECKED | DATE |
| HRS HIROSE ELECTRIC CO.,LTD. | APPROVED : SJ. OKAMURA | 20211217 | DRAWING NO. | ADC-160109-10-00 | | | |
| | CHECKED : SZ. ONO | 20211217 | PART NO. | DF13-*DS-1.25C(10) | | | |
| | DESIGNED : HT. SATO | 20211217 | CODE NO. | CL536- | | | |
| | DRAWN : SK. CHIBA | 20211217 | | | | | |