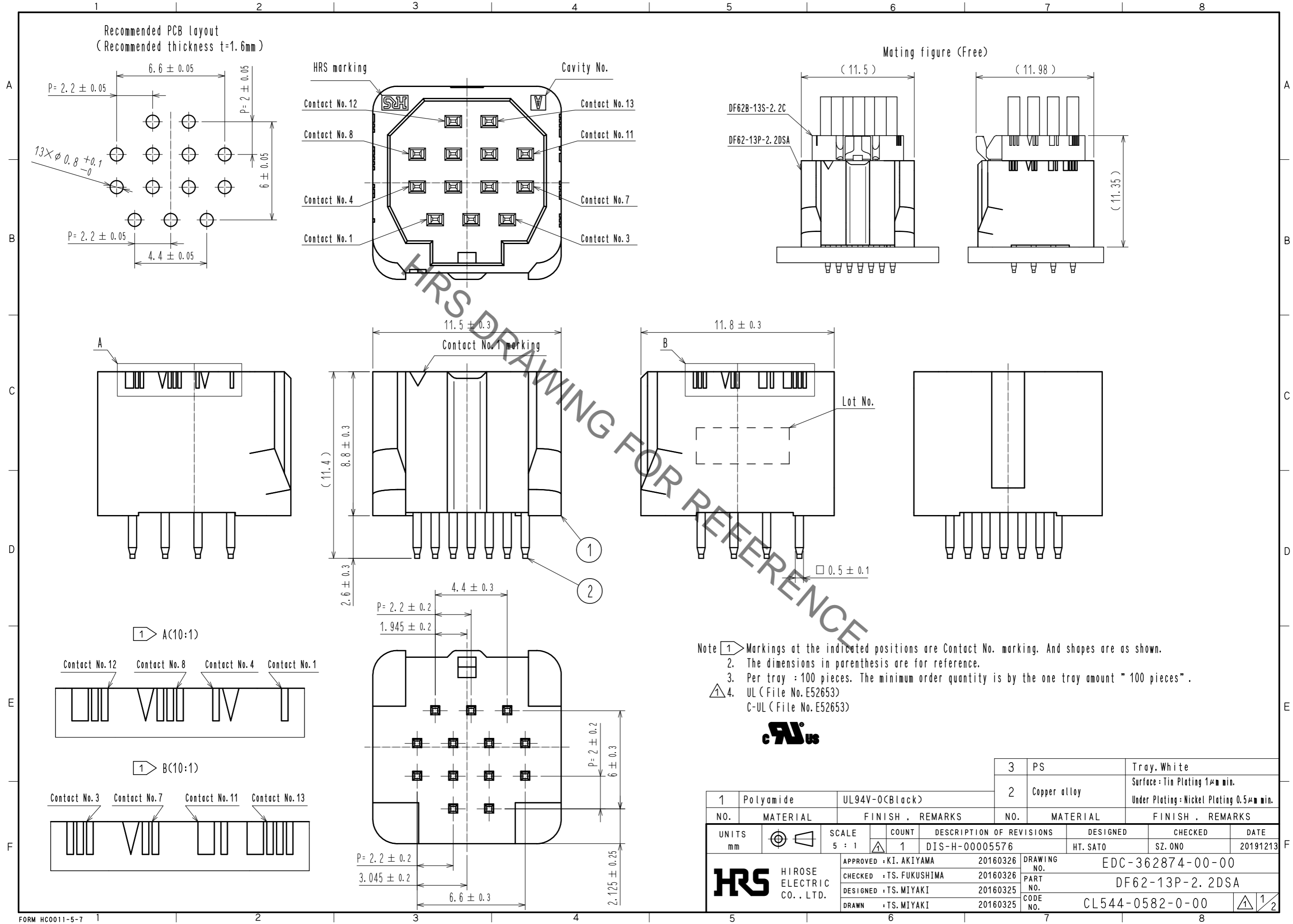


Aug.1.2022 Copyright 2022 HIROSE ELECTRIC CO., LTD. All Rights Reserved.  
 In case of consideration for using Automotive equipment / device which demand high reliability, kindly contact our sales window correspondents.

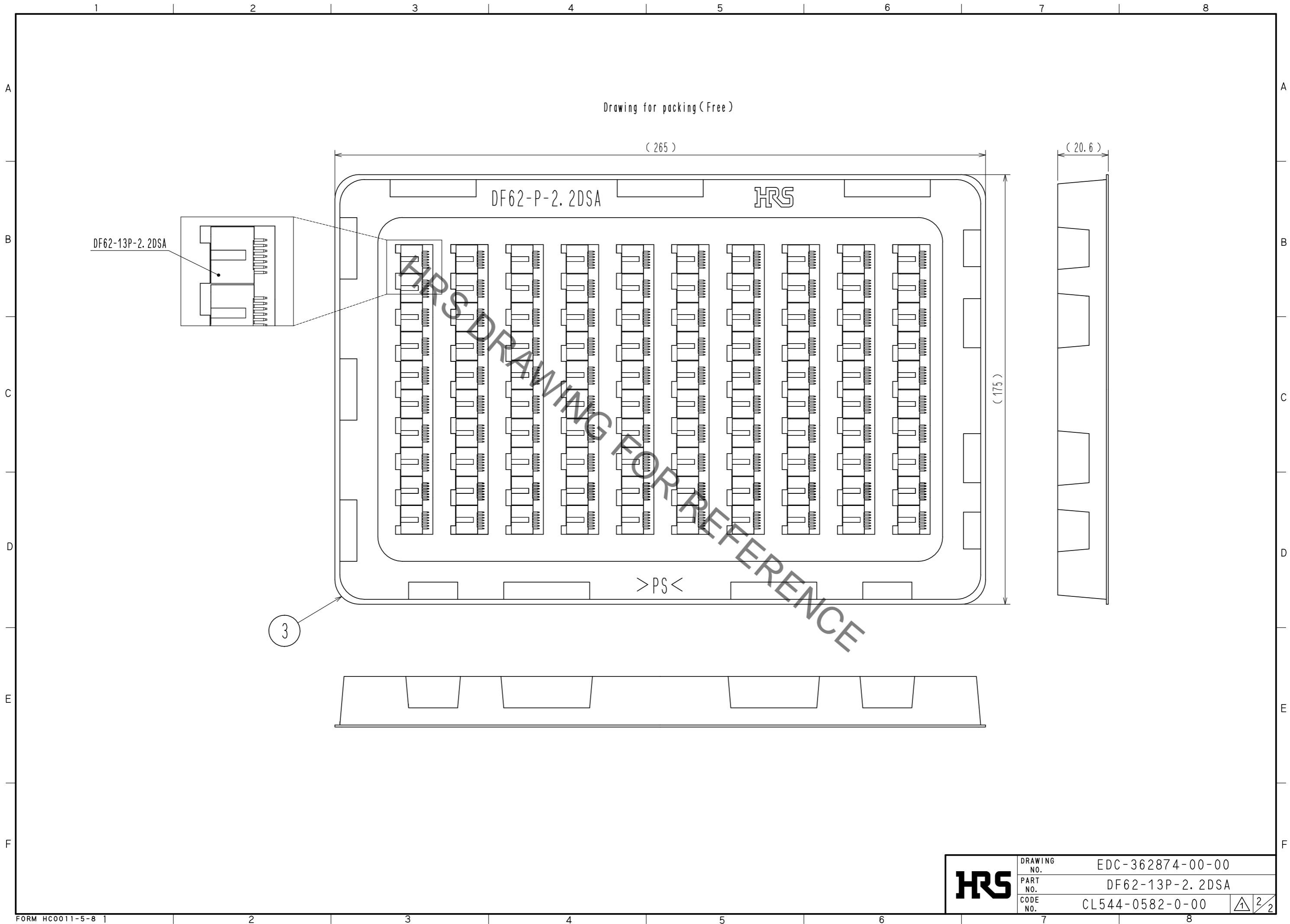


- Note
- 1 Markings at the indicated positions are Contact No. marking. And shapes are as shown.
  - 2 The dimensions in parenthesis are for reference.
  - 3 Per tray : 100 pieces. The minimum order quantity is by the one tray amount " 100 pieces".
  - 4 UL (File No. E52653)  
C-UL (File No. E52653)



1	Polyamide	UL94V-0(Black)	3	PS	Tray, White		
2	Copper alloy		2	Copper alloy	Surface: Tin Plating $1\mu\text{m}$ min. Under Plating: Nickel Plating $0.5\mu\text{m}$ min.		
NO.	MATERIAL	FINISH . REMARKS	NO.	MATERIAL	FINISH . REMARKS		
UNITS		SCALE	COUNT	DESCRIPTION OF REVISIONS	DESIGNED	CHECKED	DATE
mm		5 : 1	1	DIS-H-00005576	HT. SATO	SZ. ONO	20191213
<b>HRS</b> HIROSE ELECTRIC CO., LTD.		APPROVED : KI. AKIYAMA	20160326	DRAWING NO. EDC-362874-00-00			
		CHECKED : TS. FUKUSHIMA	20160326	PART NO. DF62-13P-2.2DSA			
		DESIGNED : TS. MIYAKI	20160325	CODE NO. CL544-0582-0-00			
		DRAWN : TS. MIYAKI	20160325				

Aug.1.2022 Copyright 2022 HIROSE ELECTRIC CO., LTD. All Rights Reserved.  
In case of consideration for using Automotive equipment / device which demand high reliability, kindly contact our sales window correspondents.



<b>HRS</b>	DRAWING NO.	EDC-362874-00-00
	PART NO.	DF62-13P-2.2DSA
	CODE NO.	CL544-0582-0-00

2/2