

[1]. Scope

These instructions provide product information and handling instructions for the DM1AAseries.

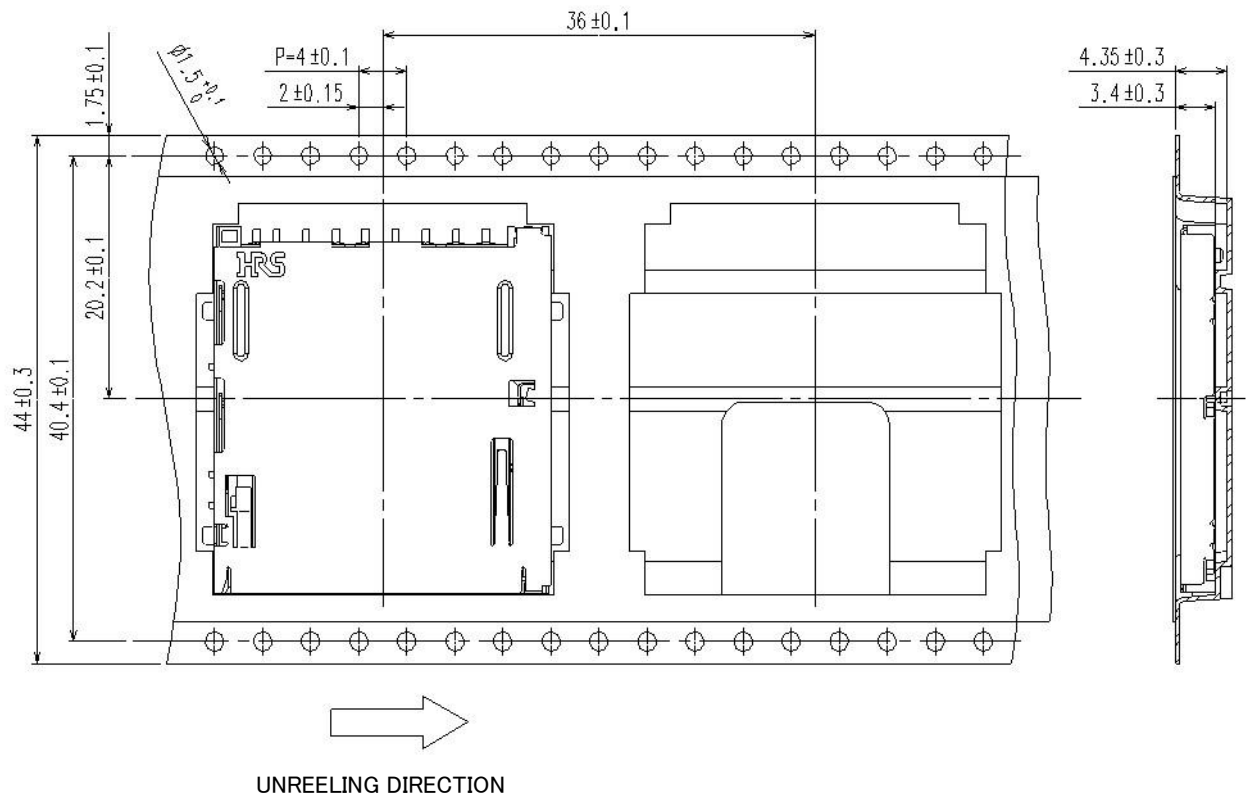
[2]. Product

Connector name	Connector type
DM1AA-SF-PEJ (21)	Connector for SD card
DM1AA-SF-PEJ (31)	
DM1AA-SF-PEJ (82)	
DM1AA-SF-PEJ (92)	

[3]. Product Information

3 - 1. Packaging format (conforms to JIS C 0806-3)

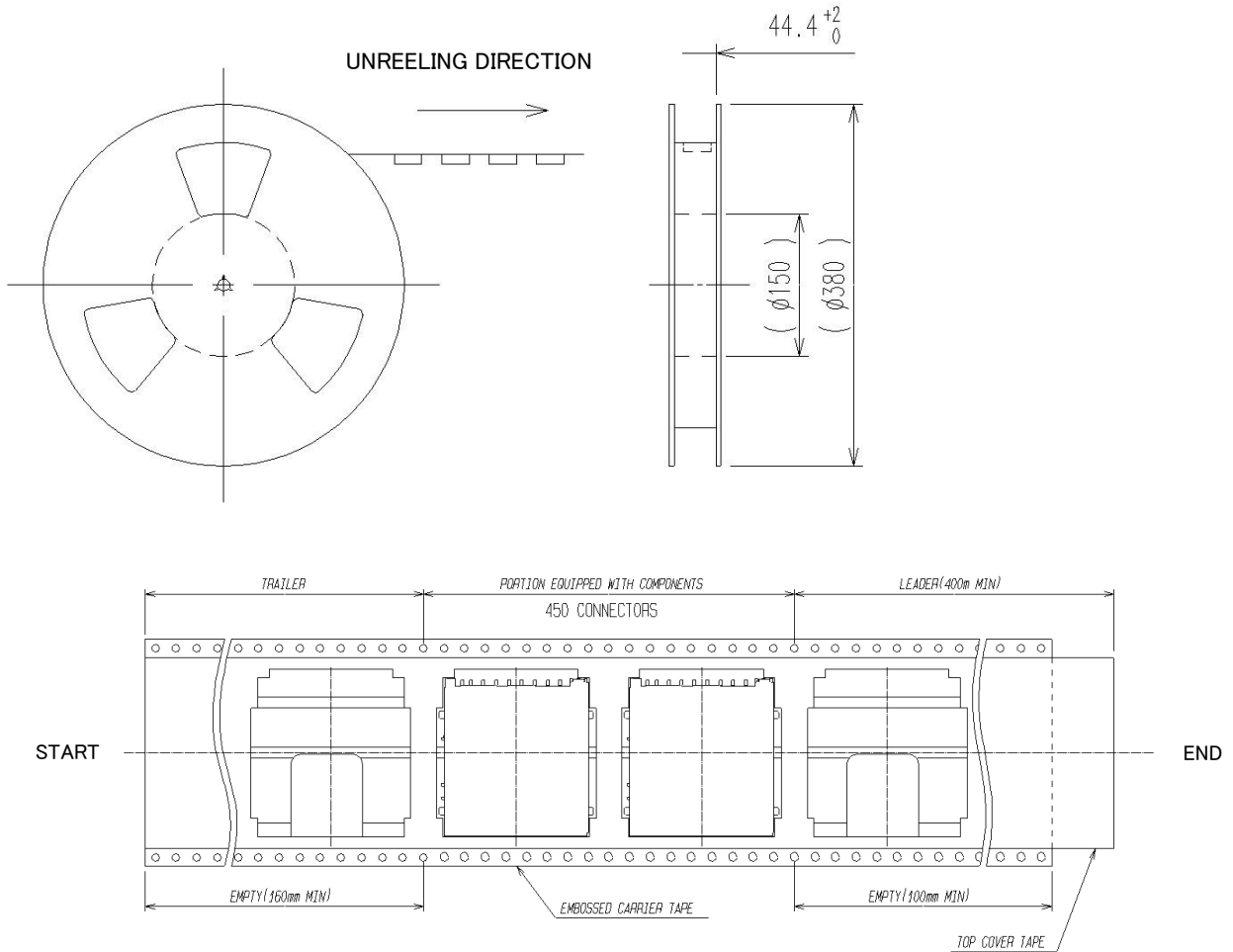
● Dimensional drawing for embossed carrier tape. One reel: 450 per reel (*)



※For exact specifications, please refer to our shipped product specifications.

COUNT	DESCRIPTION OF REVISIONS	DESIGNED	CHECKED	DATE
△ 0	DIS-F-00022155	MM. ISHII	HT. YAMAGUCHI	20250121
名称 TITLE		HIROSE ELECTRIC CO., LTD.		
DM1AA Series Product Information and Handling Instructions		APPROVED	HS. OKAWA	20121016
		CHECKED	HT. YAMAGUCHI	20121016
		DESIGNED	TY. EDAGAWA	20121016
		WRITTEN	TY. EDAGAWA	20121016
技術指定書 TECHICAL SPECIFICATION		ETAD-F0371		△ 1 / 6

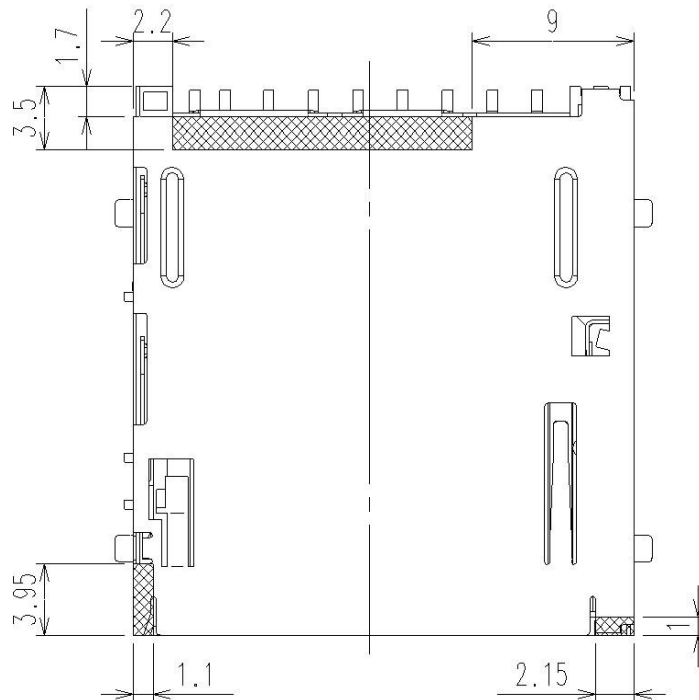
● Dimensional drawing of reeled product



3 - 2. Product Information

◆ Attachable area on the upper side

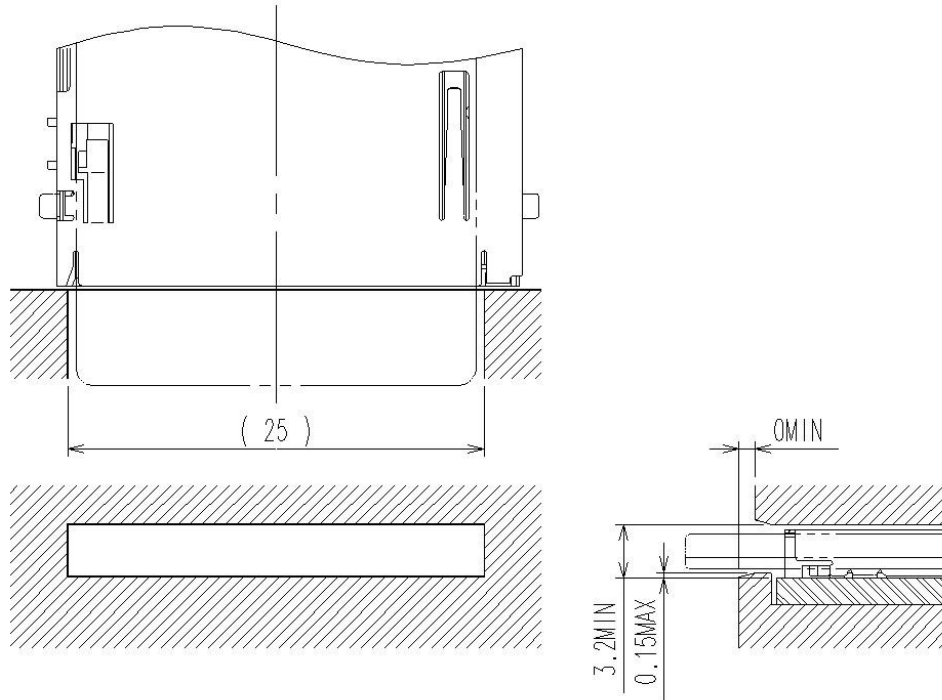
- The shaded area shown in the drawing below designates the area where the product can be pressed on from the upper side using the enclosure.



◆ Recommended enclosure

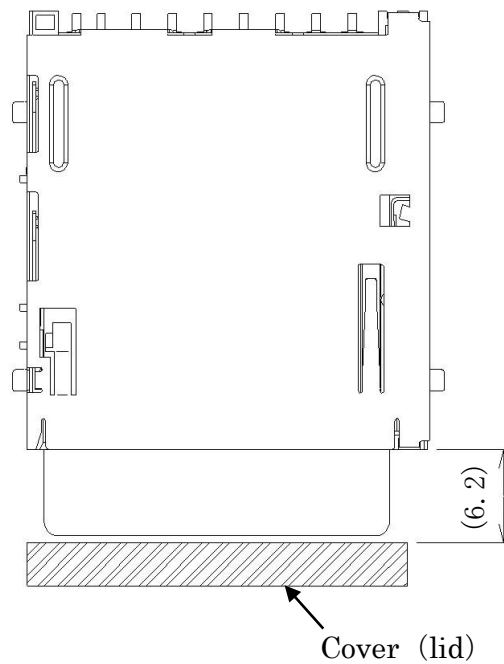
● Recommended enclosure dimensions

We recommend the enclosure dimensions as shown below.



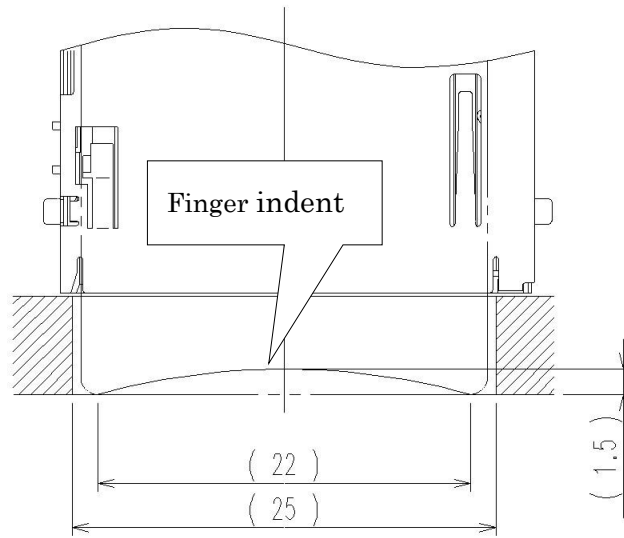
● Recommended dimensions for attaching a cover (lid)

Please install a cover (lid) to prevent the card from falling or becoming misplaced due to unforeseen causes. The following dimensions are recommended for attaching a cover (lid).



● Finger indent

We recommend that you design your enclosure with a "finger indent" as shown in the drawing below to facilitate card withdrawal.

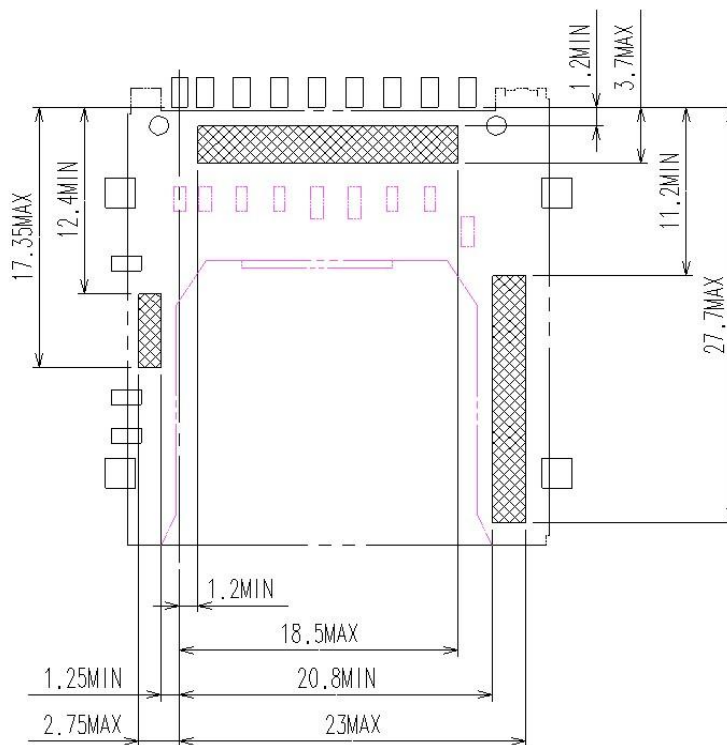


◆ Area recommended for the application of surface mounting adhesive

Make sure to apply adhesives in the applicable areas shown in the drawing below.

Avoid the use of adhesives in other areas as this can lead to functional problems.

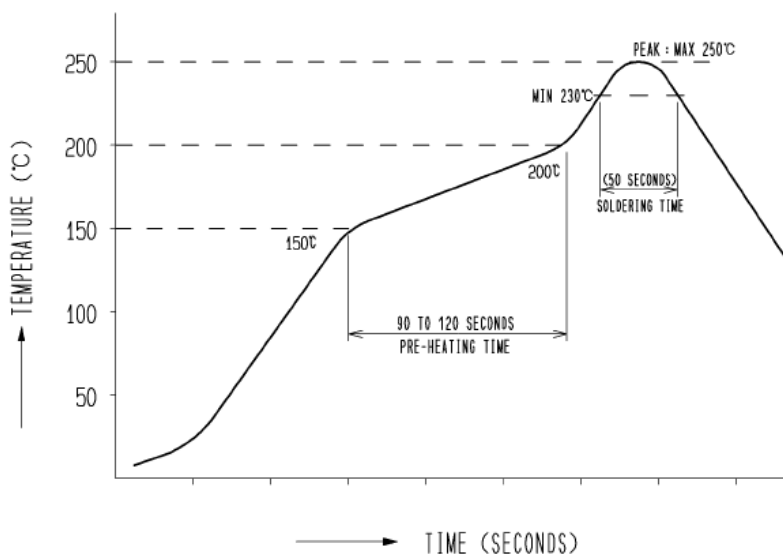
Do not apply excessive amounts of adhesive as this can cause the product to "float" which may in turn cause solder failure. Make sure to use only the smallest amount of adhesive possible.



Recommended adhesive SOMAKOTE IR-010H-3

(Made by Somar Corporation)

◆ Recommended temperature profile



<Conditions>

Reflow method : Combined far-IR and hot-air reflow

Reflow atmosphere : Ambient air

Solder : Cream type Sn/3.0Ag/0.5Cu
(M705-GRN360-K2-V
made by Senju Kinzoku)

Board tested : 60×100×1mm glass epoxy

Metal mask thickness : 0.15mm

This temperature profile applies to the conditions stated above.

Since temperature profiles can vary depending on the type and manufacturer of the cream solder used, as well as board size and other factors including conditions of the parts to be mounted, make sure to check the mounting conditions carefully before use.

[4]. Reminders

1. This product is equipped with an ejection function. Never wash the entire connector as this could lead to problems with this function. If it must be washed, wash only the soldered areas and make sure that you do not leave any cleaner residues on the connector. Cleaner residues can cause problems with card insertion/extraction and electrical performance.

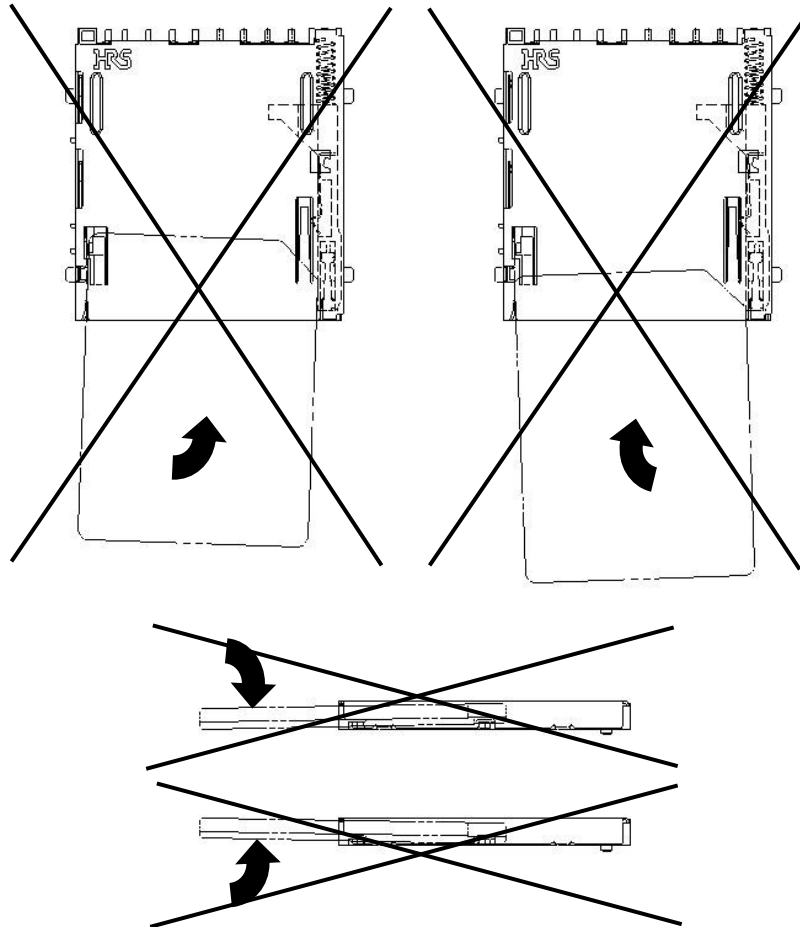


2. Lubricant is applied to this product in order to improve sliding property. Lubricant may adhere to the cover due to its appearance, but this does not affect its function. Due to the manufacturing process, traces of press oil may remain on the cover, but this does not affect its function.
3. If you will be performing card recognition and operating inspections in your assembly process, please pay attention to the points listed below. If any of these points do not meet requirements, use a new card to perform your inspections.
 - Outer dimensions must be within specifications. Pay particular attention not to use products that have become off-spec due to wear.
 - Make sure that there is no severe wear on the pad (base material must not be exposed).

4. Excessive force may cause the connector to fail or become damaged.

Please handle the connector with care and make sure that it does not deform in any way. In particular, avoid the following if you will be performing card recognition and operating inspections in your assembly process without installing the product to an enclosure.

- Do not insert or withdraw cards at an angle, whether in a vertical or lateral direction.
- Do not insert or withdraw a partially inserted card by prying it in a vertical or lateral direction.



5. This is a connector designed to be mounted on boards.

Make sure not to use the connector on its own as this could lead to functional problems.

6. This is a connector for SD card. Do not insert other types of cards.

Make sure not to insert the card in the wrong direction, at an angle, or forcibly.

This product is equipped with a function for preventing users from inserting cards in the wrong direction, but damage may occur to the card and/or connector if the card is forcibly inserted in the wrong direction.

7. This product is designed that card, which is inserted and locked, can be pulled by certain amount of force (about 4N) in order to reduce the damage into card or connector in minimum. We should not do card pull when locked as this may have some impact on card and connector life cycle.