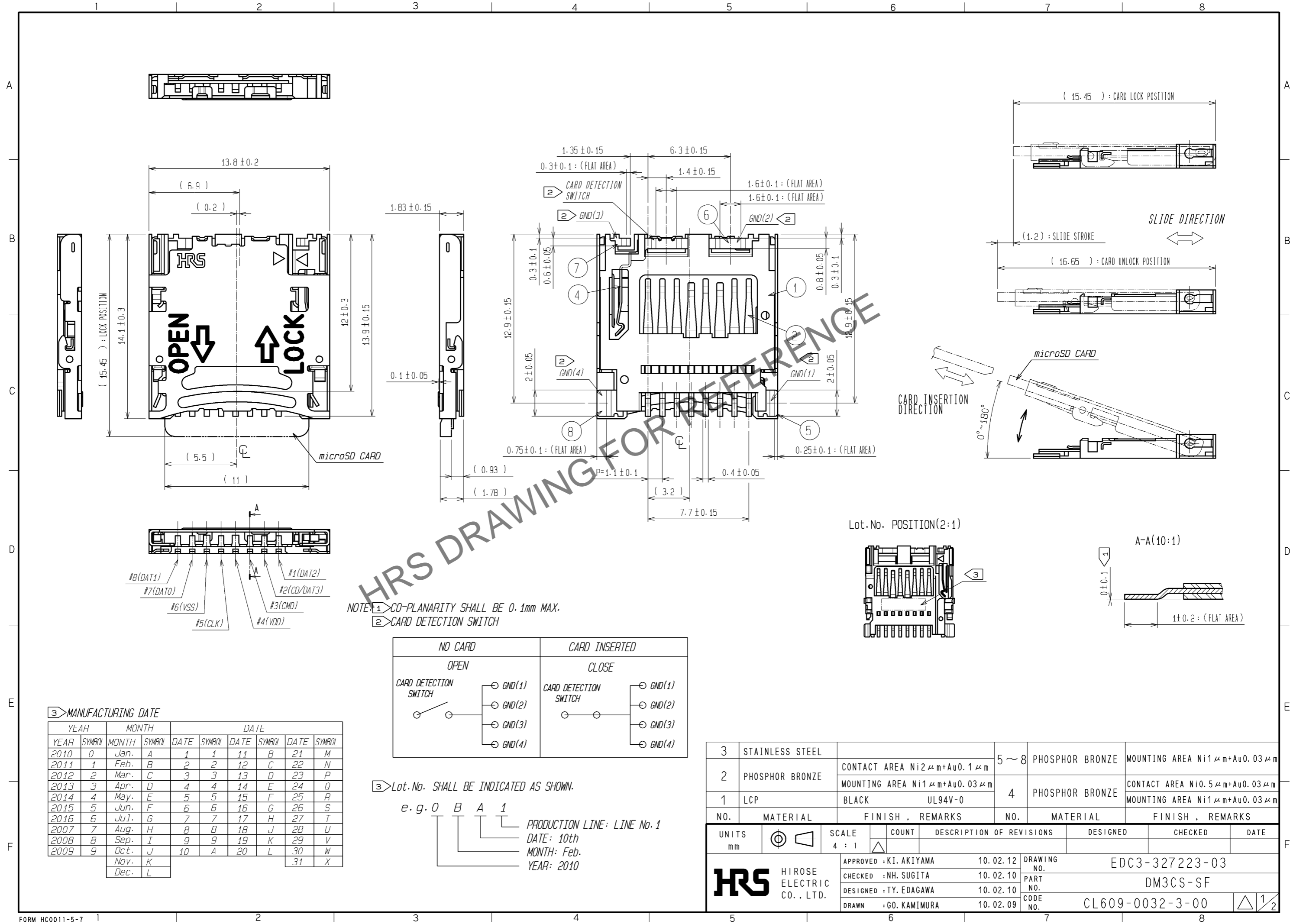
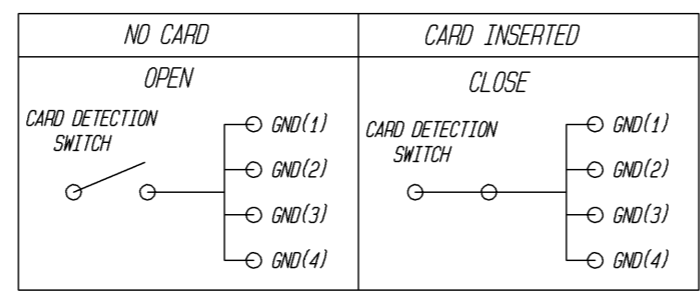


Apr.1.2026 Copyright 2026 HIROSE ELECTRIC CO., LTD. All Rights Reserved.
 In case of consideration for using Automotive equipment / device which demand high reliability, kindly contact our sales window correspondents.

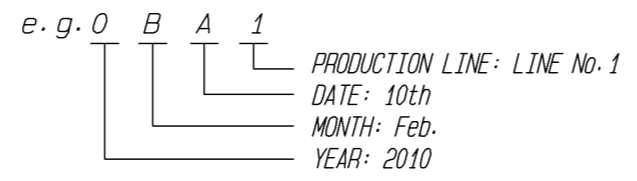


HRS DRAWING FOR REFERENCE

NOTE: ① CO-PLANARITY SHALL BE 0.1mm MAX.
 ② CARD DETECTION SWITCH



③ Lot.No. SHALL BE INDICATED AS SHOWN.



③ MANUFACTURING DATE

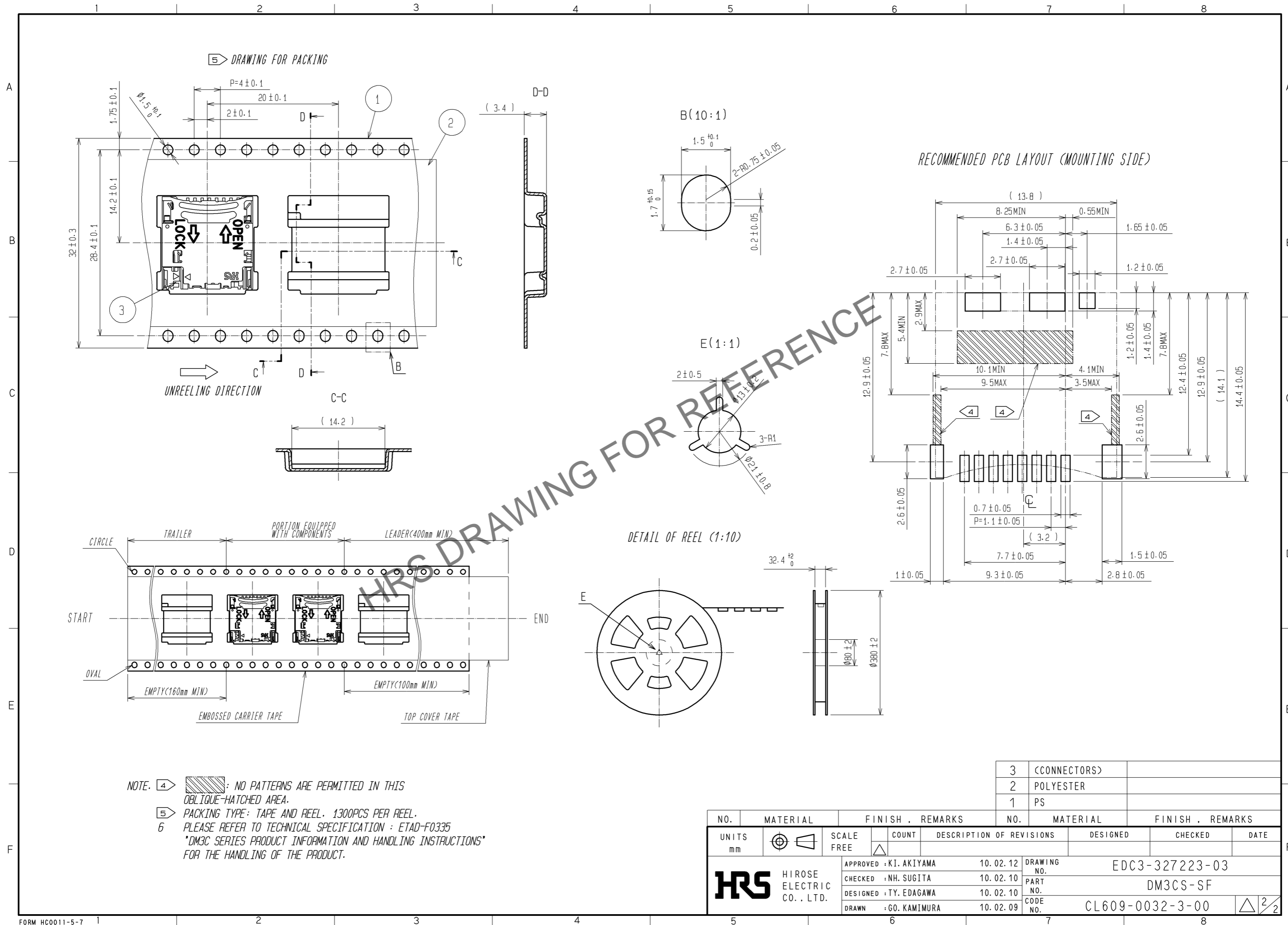
| YEAR | | MONTH | | DATE | | | | | |
|------|--------|-------|--------|------|--------|------|--------|------|--------|
| YEAR | SYMBOL | MONTH | SYMBOL | DATE | SYMBOL | DATE | SYMBOL | DATE | SYMBOL |
| 2010 | 0 | Jan. | A | 1 | 1 | 11 | B | 21 | M |
| 2011 | 1 | Feb. | B | 2 | 2 | 12 | C | 22 | N |
| 2012 | 2 | Mar. | C | 3 | 3 | 13 | D | 23 | P |
| 2013 | 3 | Apr. | D | 4 | 4 | 14 | E | 24 | Q |
| 2014 | 4 | May. | E | 5 | 5 | 15 | F | 25 | R |
| 2015 | 5 | Jun. | F | 6 | 6 | 16 | G | 26 | S |
| 2016 | 6 | Jul. | G | 7 | 7 | 17 | H | 27 | T |
| 2007 | 7 | Aug. | H | 8 | 8 | 18 | J | 28 | U |
| 2008 | 8 | Sep. | I | 9 | 9 | 19 | K | 29 | V |
| 2009 | 9 | Oct. | J | 10 | A | 20 | L | 30 | W |
| | | Nov. | K | | | | | | |
| | | Dec. | L | | | | | | |

| NO. | MATERIAL | FINISH . REMARKS | NO. | MATERIAL | FINISH . REMARKS |
|-----|-----------------|------------------------------|-----|-----------------|-------------------------------|
| 3 | STAINLESS STEEL | | 5~8 | PHOSPHOR BRONZE | MOUNTING AREA Ni1μm+Au0.03μm |
| 2 | PHOSPHOR BRONZE | CONTACT AREA Ni2μm+Au0.1μm | 4 | PHOSPHOR BRONZE | CONTACT AREA Ni0.5μm+Au0.03μm |
| | | MOUNTING AREA Ni1μm+Au0.03μm | | | MOUNTING AREA Ni1μm+Au0.03μm |
| 1 | LCP | BLACK UL94V-0 | | | |

| UNITS | SCALE | COUNT | DESCRIPTION OF REVISIONS | DESIGNED | CHECKED | DATE |
|-------|-------|-------|--------------------------|----------|---------|------|
| mm | 4 : 1 | △ | | | | |

| | | |
|--------------------------------------|---------------------------------|----------------------------|
| HRS HIROSE ELECTRIC CO., LTD. | APPROVED : KI. AKIYAMA 10.02.12 | DRAWING NO. EDC3-327223-03 |
| | CHECKED : NH. SUGITA 10.02.10 | PART NO. DM3CS-SF |
| | DESIGNED : TY. EDAGAWA 10.02.10 | CODE NO. CL609-0032-3-00 |
| | DRAWN : GO. KAMIMURA 10.02.09 | 1/2 |

Apr.1.2026 Copyright 2026 HIROSE ELECTRIC CO., LTD. All Rights Reserved.
 In case of consideration for using Automotive equipment / device which demand high reliability, kindly contact our sales window correspondents.



NOTE. 4: NO PATTERNS ARE PERMITTED IN THIS OBLIQUE-HATCHED AREA.
 5: PACKING TYPE: TAPE AND REEL. 1300PCS PER REEL.
 6: PLEASE REFER TO TECHNICAL SPECIFICATION: ETAD-F0335 *DM3C SERIES PRODUCT INFORMATION AND HANDLING INSTRUCTIONS* FOR THE HANDLING OF THE PRODUCT.

| | | | | | | | | |
|--------------------------------------|----------|-----------------------|-----------|----------------------------|--------------|----------|---------|------|
| NO. | MATERIAL | FINISH | REMARKS | NO. | MATERIAL | FINISH | REMARKS | |
| | | | | 3 | (CONNECTORS) | | | |
| | | | | 2 | POLYESTER | | | |
| | | | | 1 | PS | | | |
| UNITS mm | | SCALE FREE | COUNT | DESCRIPTION OF REVISIONS | | DESIGNED | CHECKED | DATE |
| HRS HIROSE ELECTRIC CO., LTD. | | APPROVED: KI. AKIYAMA | 10.02.12 | DRAWING NO. EDC3-327223-03 | | | | |
| | | CHECKED: NH. SUGITA | 10.02.10 | PART NO. DM3CS-SF | | | | |
| | | DESIGNED: TY. EDAGAWA | 10.02.10 | CODE NO. CL609-0032-3-00 | | | | |
| | | DRAWN: GO. KAMIMURA | 10.02.09 | | | | | |