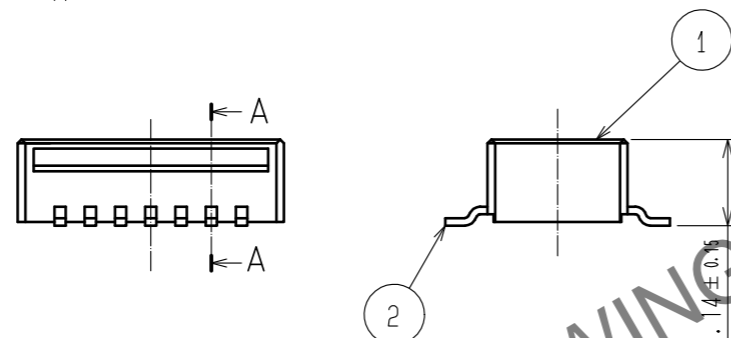
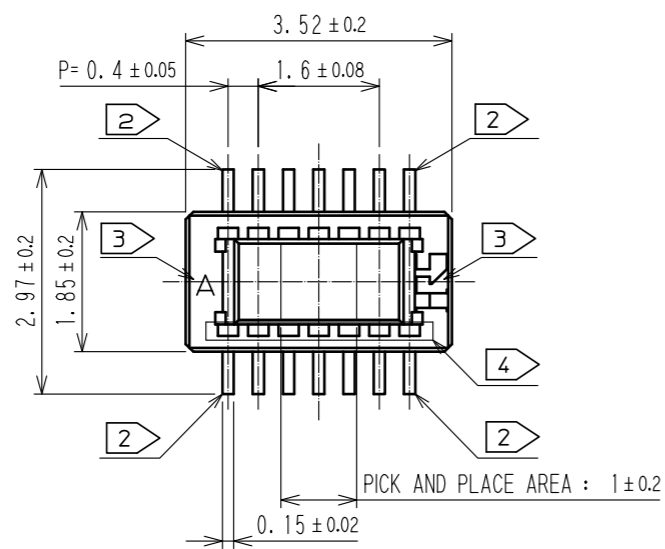
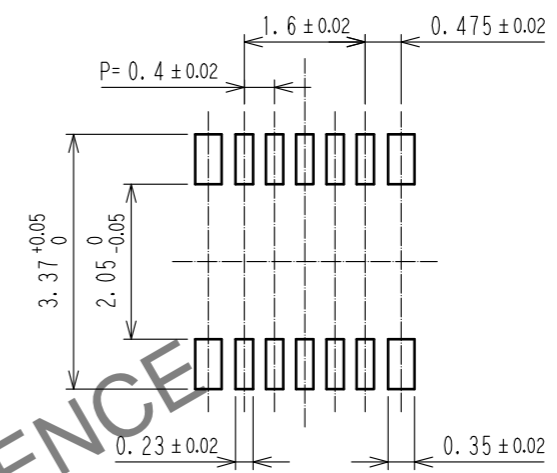


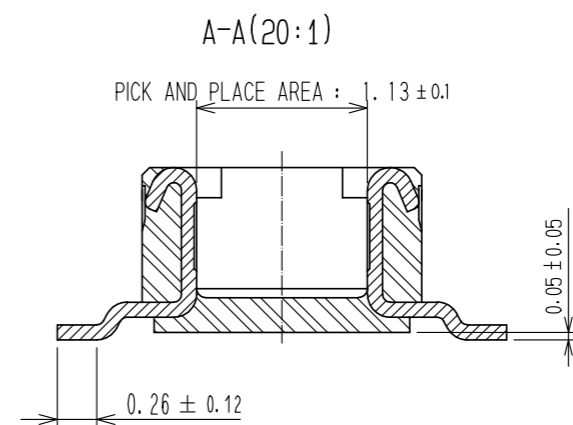
Oct.1.2024 Copyright 2024 HIROSE ELECTRIC CO., LTD. All Rights Reserved.
 In case of consideration for using Automotive equipment / device which demand high reliability, kindly contact our sales window correspondents.



RECOMMENDED PATTERN



RECOMMENDED METAL MASK THICKNESS: 120 μm
 RECOMMENDED METAL MASK OPENING RATIO: 80% FOR LEAD PAD



- NOTES
1. ALL LEADS CO-PLANARITY SHALL BE USED 0.1MAX.
 2. EACH ONE CONTACT AT 4 CORNERS SHALL BE USED AS METAL HOLD DOWN.
 3. HRS MARK AND CAV NO. ARE INDICATED IN APPROX. POSITION SHOWN.
 4. THERE IS A POSSIBILITY THAT THE RESIN WILL BE EXPOSED AT THIS AREA. BUT THIS WILL NOT AFFECT THE CONTACT RELIABILITY.

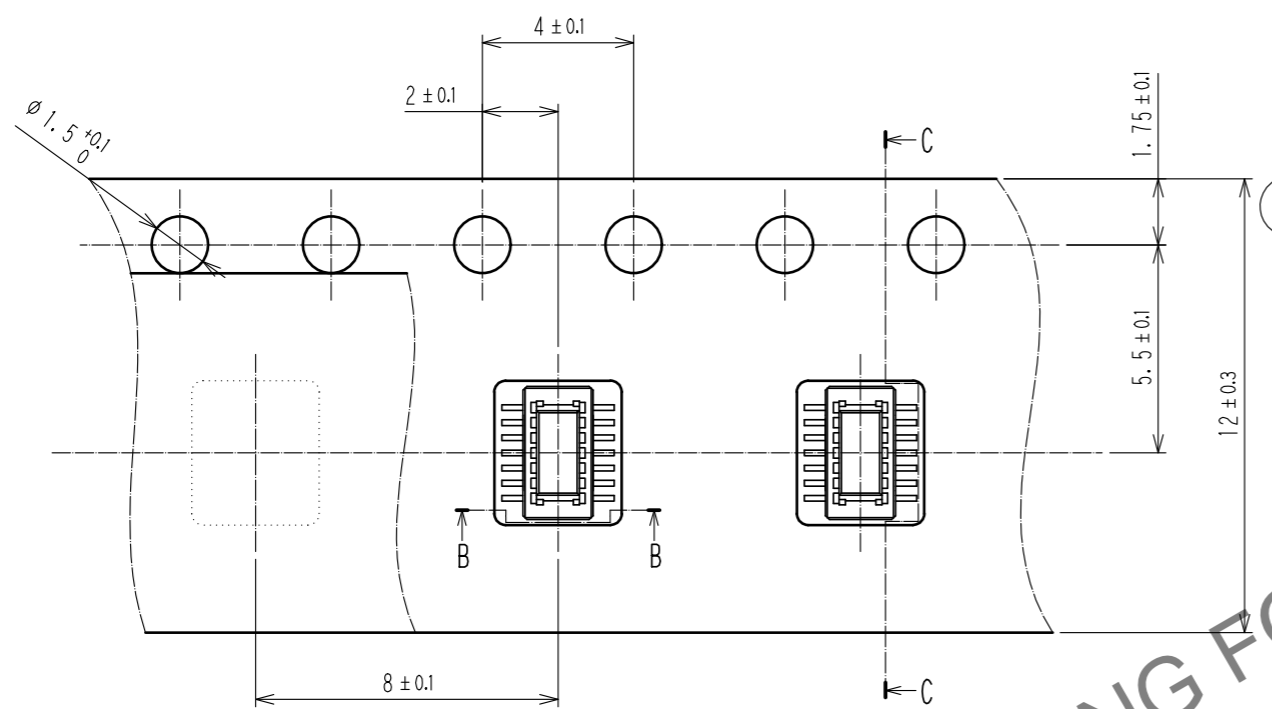
| NO. | MATERIAL | FINISH . | REMARKS | NO. | MATERIAL | FINISH . | REMARKS |
|-----|--------------|----------|--|-----|-----------|----------|------------------------------|
| 2 | COPPER ALLOY | | CONTACT AREA:GOLD 0.05 μm MIN SMT LEAD:GOLD 0.05 μm MIN UNDERPLATING:NICKEL 1 μm MIN | 6 | PS | | CLEAR, REINFORCEMENT COLLAR |
| | | | | 5 | PS | | BLACK |
| | | | | 4 | POLYESTER | | CLEAR, COVER TAPE |
| 1 | LCP | | BLACK, UL94V-0 | 3 | PS | | CLEAR, EMBOSSED CARRIER TAPE |

| UNITS | SCALE | COUNT | DESCRIPTION OF REVISIONS | DESIGNED | CHECKED | DATE |
|-------|--------|-------|--------------------------|----------|---------|------|
| mm | 10 : 1 | △ | | | | |

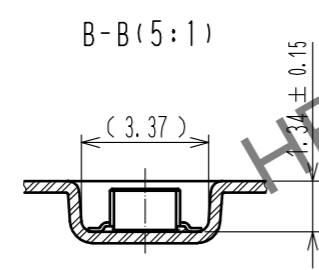
| | | | | |
|--------------------------------------|------------------------|----------|-------------|----------------------|
| HRS HIROSE ELECTRIC CO., LTD. | APPROVED : WR. FUKUCHI | 20210303 | DRAWING NO. | EDC-386793-58-00 |
| | CHECED : TS. MIYAZAKI | 20210303 | PART NO. | DF40TC-10DP-0.4V(58) |
| | DESIGNED : YK. SATAKE | 20210303 | CODE NO. | CL0684-4269-0-58 |
| | DRAWN : YK. SATAKE | 20210303 | | |

Oct.1.2024 Copyright 2024 HIROSE ELECTRIC CO., LTD. All Rights Reserved.
 In case of consideration for using Automotive equipment / device which demand high reliability, kindly contact our sales window correspondents.

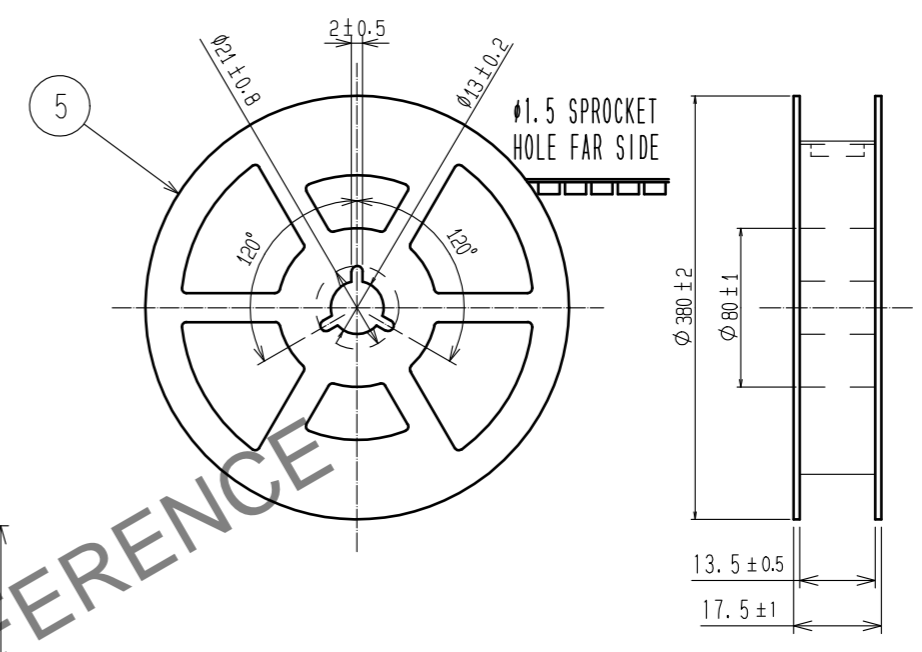
ENBOSSED CARRIER TAPE PACKAGING (5:1)



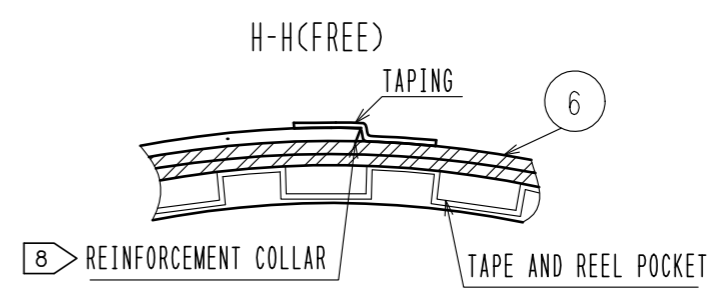
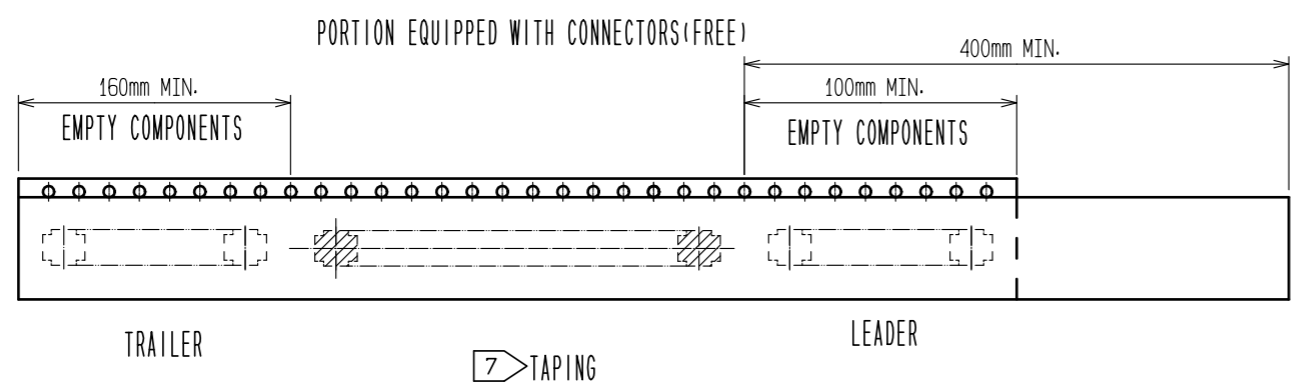
DIRECTION OF UNREELING



STYLE AND DIMENSIONS OF REEL (FREE)



- NOTES
- 5. PER REEL 1000 CONNECTORS.
 - 6. THE DIMENSIONS IN PARENTHESES ARE FOR REFERENCE.
 - 7. REFER TO JIS C 0806 (PACKING OF COMPONENTS FOR AUTOMATIC HANDLING)
 - 8. AFTER PACKAGING, ROLL 2 METERS OF THE REINFORCEMENT COLLAR TO OUTER CIRCUMFERENCE OF TAPE AND REEL POCKET, AND TAPE DOWN AT THE END THE COLLAR.



| | | |
|------------|-------------|----------------------|
| HRS | DRAWING NO. | EDC-386793-58-00 |
| | PART NO. | DF40TC-10DP-0.4V(58) |
| | CODE NO. | CL0684-4269-0-58 |
| | | 2/2 |