

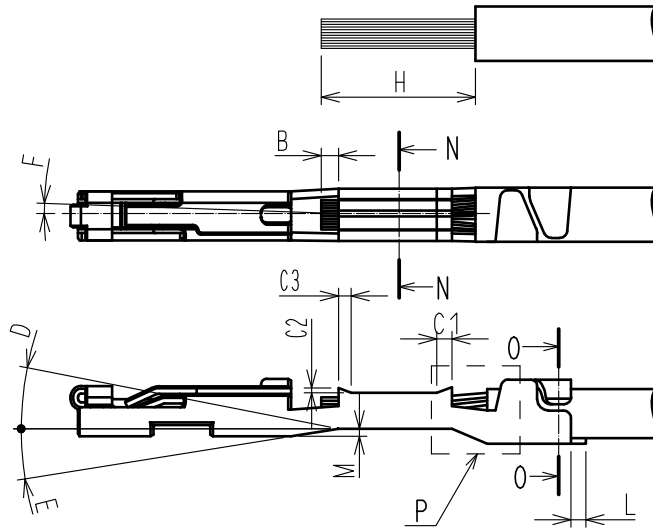
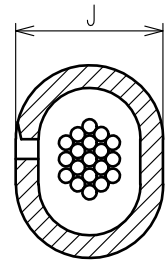
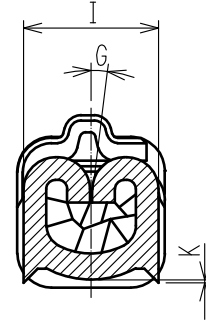
1. Scope

This technical specification prescribes crimp condition of ZE05-2022SCF (CL752-2001-0)

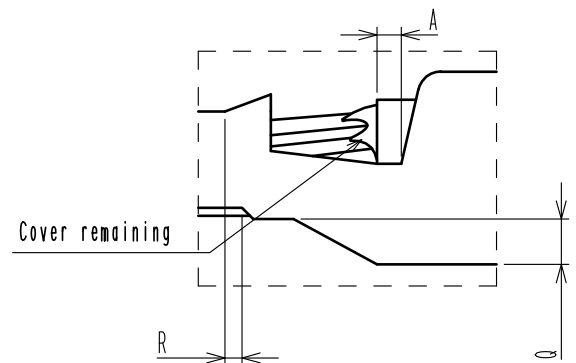
2. Applicable wire

- Applicable wire size : 0.3~0.5SQ
- Applicable insulation size : $\phi 1.4 \sim \phi 1.5$

3. Quality standard

N-N(WIRE BARREL
CROSS-SECTION IMAGE)O-O(INSULATION BARREL
CROSS-SECTION IMAGE)

P enlarged view



CHECK POINT		MEASURE (mm)
COVER LOCATION	A	0.3~0.8
LOCATION OF TIP OF THE CORE	B	0.1~0.6
BELL-MOUTH	C1	0.1~0.4
	C2	0.1 max
	C3	0.15 max
BEND-UP	D	2° max
BEND-DOWN	E	5° max
TWIST	F	±2° max
ROLLING	G	±5° max
STRIP LENGTH	H	4.0~4.6
WIDTH	WIRE BARREL	I 1.5 max
	INSULATION BARREL	J 1.63 max
HEIGHT OF METAL CUT-OUT TEETH	K	0.12 max
CUT-OFF TAB	L	0.1 max
DIFFERENCE IN LEVEL ON TRANSITION PART APPLY ONLY BEND-UP	M	0.2 max
DIFFERENCE IN LEVEL BETWEEN WIRE BARREL AND INSULATION BARREL	Q	0.25~0.4
DISRANCE BETWEEN WIRE-CRIMPER AND WIRE-ANVIL	R	0.15~0.31

Note1. Refer to a crimp condition list for the crimp height.

Note2. There is a possibility that a terminal is involved in covering and crowded by the crimping, but it's no problem on the product function.

Note3. Please confirm that the terminal which did crimp enters a housing.

COUNT	DESCRIPTION OF REVISIONS	DESIGNED	CHECKED	DATE
△0				
TITLE		HRS HIROSE ELECTRIC CO., LTD.		
ZE05-2022SCF CRIMP QUALITY STANDARD		APPROVED	HK. UMEHARA	20181210
		CHECKED	HH. TSUKUMO	20181207
		CHARGED	YONGMUN LEE	20181207
		WRITTEN	MN. SATOH	20181207
TECHNICAL SPECIFICATION		ETAD-T0589-00	△0	1/1