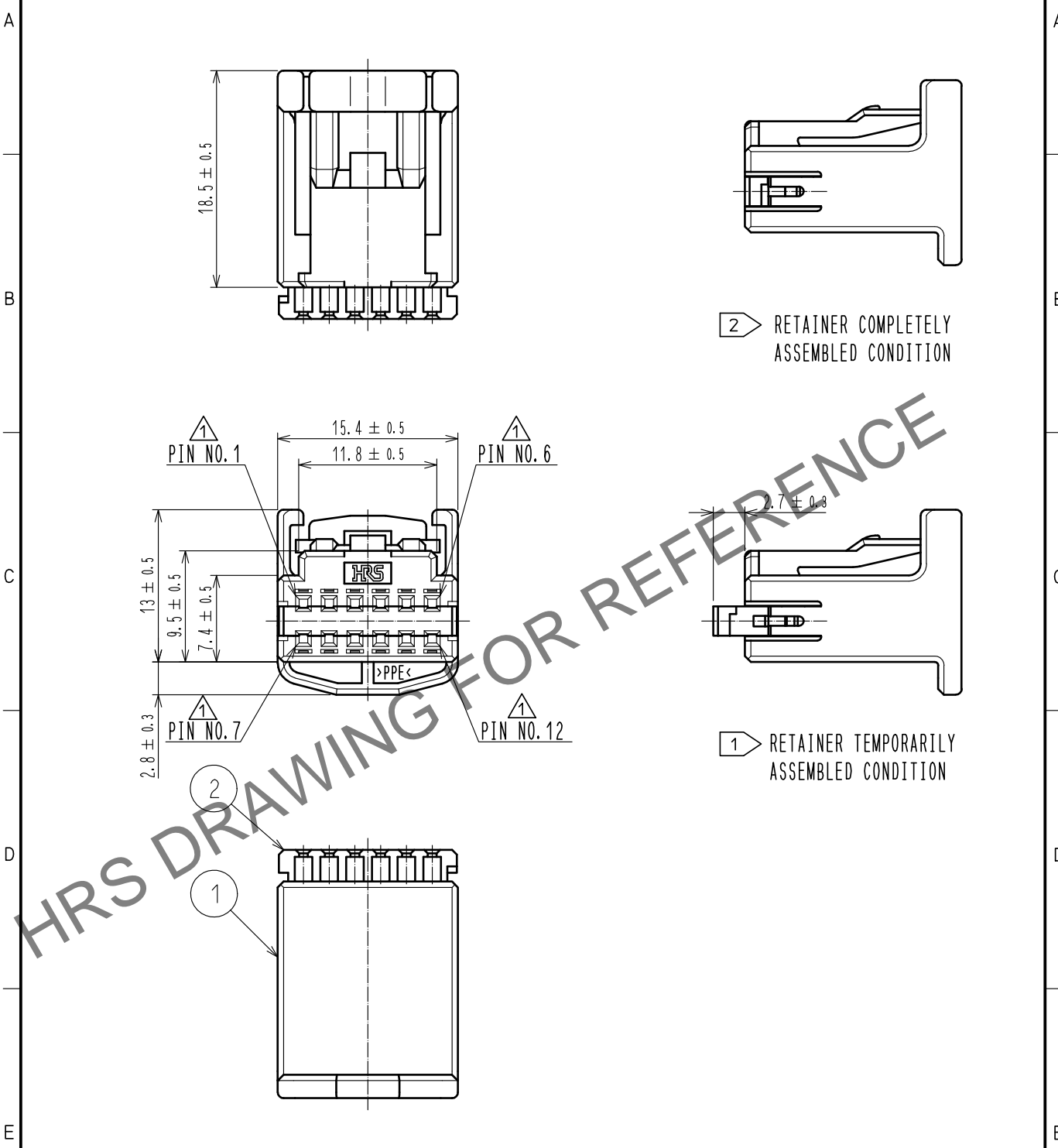






Apr.1.2024 Copyright 2024 HIROSE ELECTRIC CO., LTD. All Rights Reserved.
In case of consideration for using Automotive equipment / device which demand high reliability, kindly contact our sales window correspondents.

ELV. RoHS COMPLIANT



NOTE. 1 RETAINER IS TEMPORARILY ASSEMBLED INTO HOUSING.
NOTE. 2 RETAINER TO BE COMPLETELY ASSEMBLED INTO POSITION AFTER CONTACT IS INSERTED.

1	PPE	BLACK			2	PBT	DARK GRAY			
NO.	MATERIAL		FINISH , REMARKS			NO.	MATERIAL		FINISH , REMARKS	
UNITS mm			SCALE 2 : 1		COUNT 4	DESCRIPTION OF REVISIONS DIS-T-00004819		DESIGNED DONGCHAN KIM	CHECKED HH. TSUKUMO	DATE 20190621
 HIROSE ELECTRIC CO., LTD.				APPROVED :AR. SHIRAI		20170420	DRAWING NO. EDC-169556-50-00			
				CHECKED :HS. OZAWA		20170420	PART NO. GT25-12DS-HU/R<50>			
				DESIGNED :TK. SHISHIKURA		20170420	CODE NO. CL775-0062-8-50			
				DRAWN :TK. SHISHIKURA		20170420	 1/1			