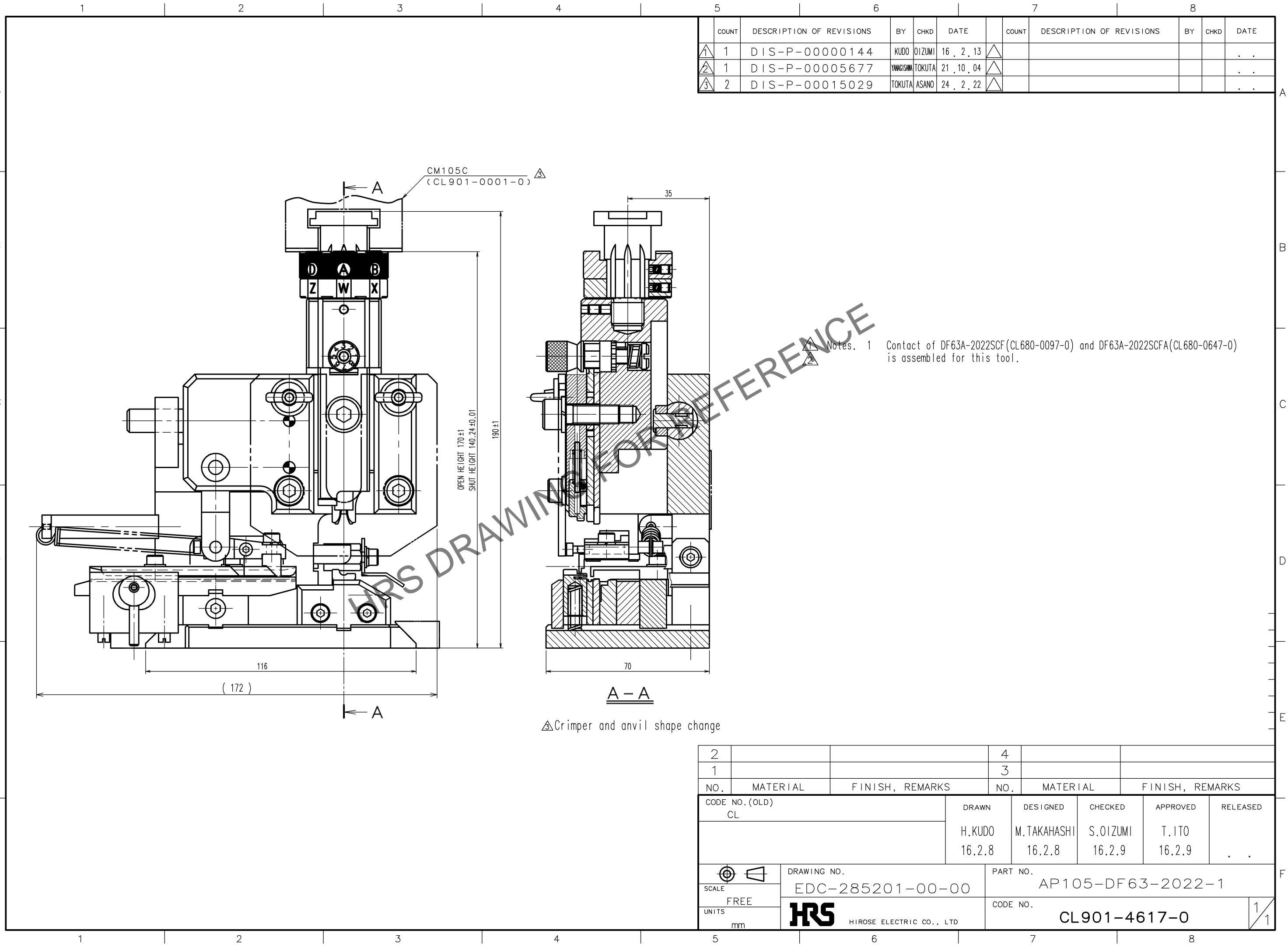


Sep.1.2024 Copyright 2024 HIROSE ELECTRIC CO., LTD. All Rights Reserved.
 In case of consideration for using Automotive equipment / device which demand high reliability, kindly contact our sales window correspondents.



COUNT	DESCRIPTION OF REVISIONS	BY	CHKD	DATE	COUNT	DESCRIPTION OF REVISIONS	BY	CHKD	DATE
①	1	DIS-P-00000144	KUDO	OIZUMI	16.2.13				
②	1	DIS-P-00005677	YAMAGISHI	TOKUTA	21.10.04				
③	2	DIS-P-00015029	TOKUTA	ASANO	24.2.22				

Notes. 1 Contact of DF63A-2022SCF (CL680-0097-0) and DF63A-2022SCFA (CL680-0647-0) is assembled for this tool.

△Crimper and anvil shape change

NO.	MATERIAL	FINISH, REMARKS	NO.	MATERIAL	FINISH, REMARKS
2			4		
1			3		

CODE NO. (OLD) CL	DRAWN H.KUDO 16.2.8	DESIGNED M.TAKAHASHI 16.2.8	CHECKED S.OIZUMI 16.2.9	APPROVED T.IITO 16.2.9	RELEASED .
----------------------	---------------------------	-----------------------------------	-------------------------------	------------------------------	---------------

SCALE FREE	DRAWING NO. EDC-285201-00-00	PART NO. AP105-DF63-2022-1
UNITS mm	HRS HIROSE ELECTRIC CO., LTD	CODE NO. CL901-4617-0

TO
PE