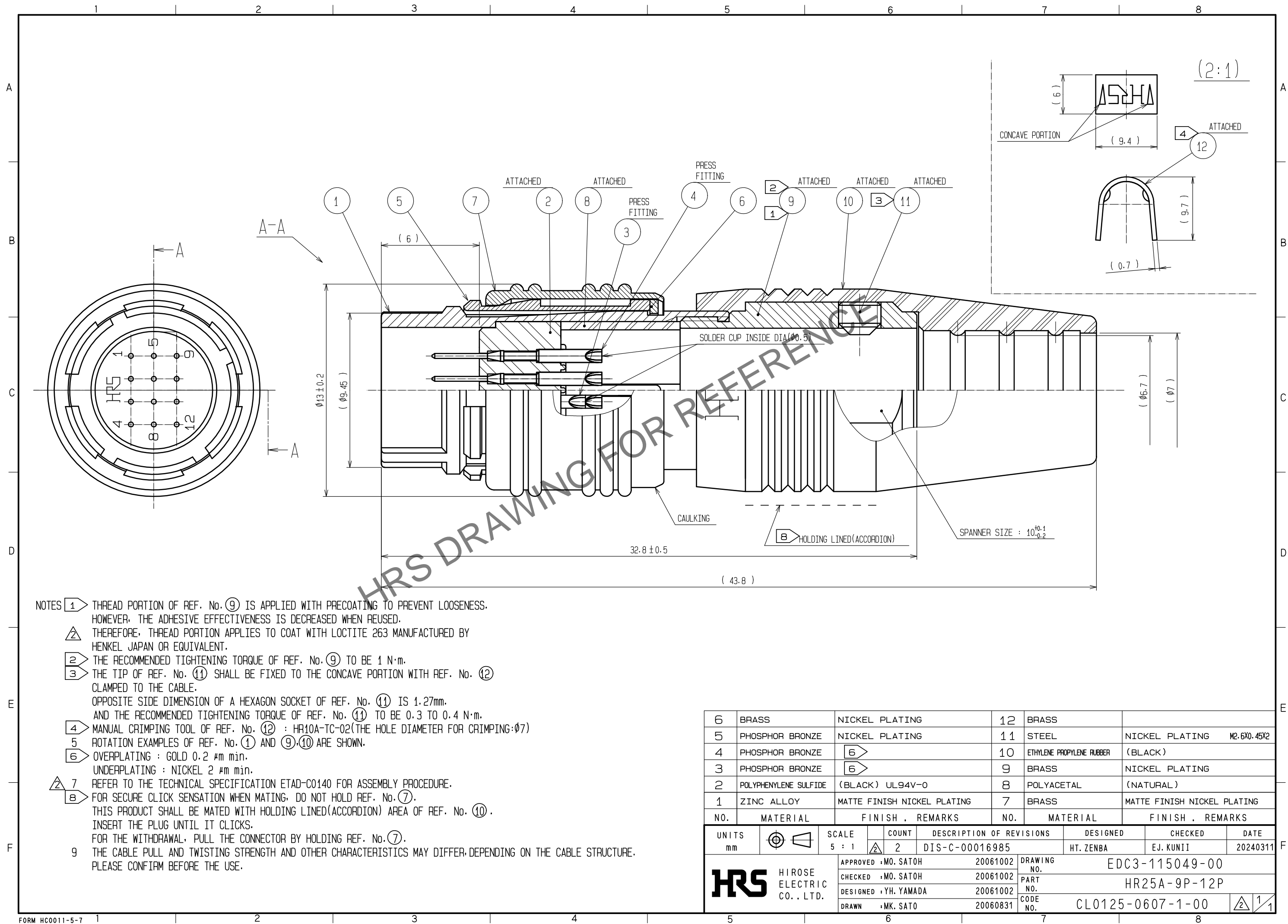


May.1.2024 Copyright 2024 HIROSE ELECTRIC CO., LTD. All Rights Reserved.
In case of consideration for using Automotive equipment / device which demand high reliability, kindly contact our sales window correspondents.



- NOTES
- ① THREAD PORTION OF REF. No. ⑨ IS APPLIED WITH PRECOATING TO PREVENT LOOSENESS. HOWEVER, THE ADHESIVE EFFECTIVENESS IS DECREASED WHEN REUSED.
 - ② THEREFORE, THREAD PORTION APPLIES TO COAT WITH LOCTITE 263 MANUFACTURED BY HENKEL JAPAN OR EQUIVALENT.
 - ② THE RECOMMENDED TIGHTENING TORQUE OF REF. No. ⑨ TO BE 1 N·m.
 - ③ THE TIP OF REF. No. ⑪ SHALL BE FIXED TO THE CONCAVE PORTION WITH REF. No. ⑫ CLAMPED TO THE CABLE.
 - ④ OPPOSITE SIDE DIMENSION OF A HEXAGON SOCKET OF REF. No. ⑪ IS 1.27mm. AND THE RECOMMENDED TIGHTENING TORQUE OF REF. No. ⑪ TO BE 0.3 TO 0.4 N·m.
 - ④ MANUAL CRIMPING TOOL OF REF. No. ⑫ : HR10A-TC-02(THE HOLE DIAMETER FOR CRIMPING:φ7)
 - ⑤ ROTATION EXAMPLES OF REF. No. ① AND ⑨,⑩ ARE SHOWN.
 - ⑥ OVERPLATING : GOLD 0.2 μm min.
UNDERPLATING : NICKEL 2 μm min.
 - ⑦ REFER TO THE TECHNICAL SPECIFICATION ETAD-C0140 FOR ASSEMBLY PROCEDURE.
 - ⑧ FOR SECURE CLICK SENSATION WHEN MATING, DO NOT HOLD REF. No. ⑦. THIS PRODUCT SHALL BE MATED WITH HOLDING LINED(ACCORDION) AREA OF REF. No. ⑩. INSERT THE PLUG UNTIL IT CLICKS. FOR THE WITHDRAWAL, PULL THE CONNECTOR BY HOLDING REF. No. ⑦.
 - ⑨ THE CABLE PULL AND TWISTING STRENGTH AND OTHER CHARACTERISTICS MAY DIFFER, DEPENDING ON THE CABLE STRUCTURE. PLEASE CONFIRM BEFORE THE USE.

6	BRASS	NICKEL PLATING	12	BRASS	
5	PHOSPHOR BRONZE	NICKEL PLATING	11	STEEL	NICKEL PLATING M2.6X0.45X2
4	PHOSPHOR BRONZE	⑥	10	ETHYLENE PROPYLENE RUBBER	(BLACK)
3	PHOSPHOR BRONZE	⑥	9	BRASS	NICKEL PLATING
2	POLYPHENYLENE SULFIDE	(BLACK) UL94V-0	8	POLYACETAL	(NATURAL)
1	ZINC ALLOY	MATTE FINISH NICKEL PLATING	7	BRASS	MATTE FINISH NICKEL PLATING
NO.	MATERIAL	FINISH , REMARKS	NO.	MATERIAL	FINISH , REMARKS
UNITS mm		SCALE 5 : 1	COUNT 2	DESCRIPTION OF REVISIONS DIS-C-00016985	
HRS HIROSE ELECTRIC CO., LTD.		APPROVED : MO. SATOH	20061002	DRAWING NO.	EDC3-115049-00
		CHECKED : MO. SATOH	20061002	PART NO.	HR25A-9P-12P
		DESIGNED : YH. YAMADA	20061002	CODE NO.	CL0125-0607-1-00
		DRAWN : MK. SATO	20060831		
		DESIGNED	HT. ZENBA	CHECKED	EJ. KUNII
		DATE	20240311		