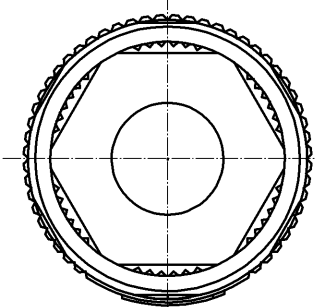
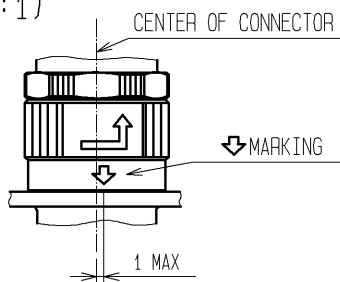
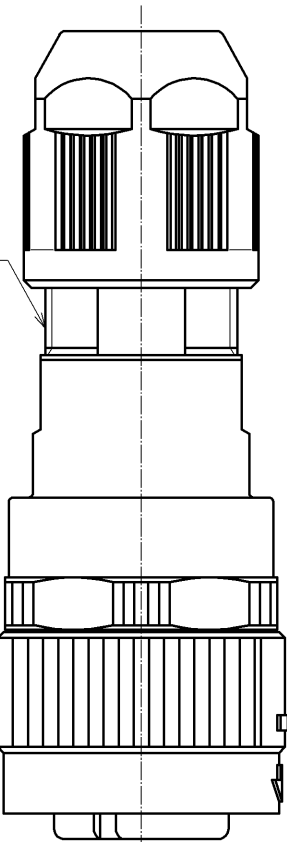


May.1.2024 Copyright 2024 HIROSE ELECTRIC CO., LTD. All Rights Reserved.
In case of consideration for using Automotive equipment / device which demand high reliability, kindly contact our sales window correspondents.

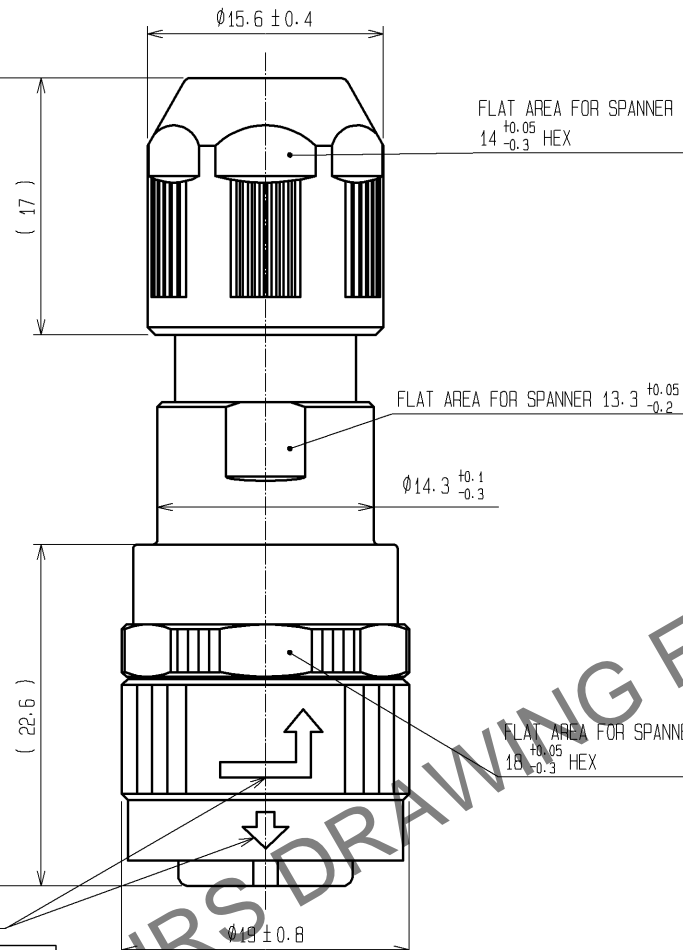
FIG. 1(1:1)



M13XL2P1
(DOUBLE-START THREAD)



49.11 ± 1 (WHEN REF. NO. ⑪ IS FASTENED.)

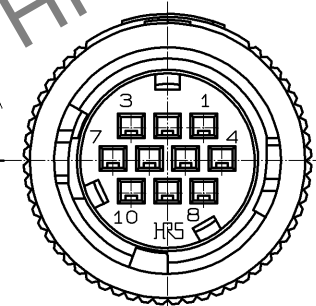


FLAT AREA FOR SPANNER
14 $\begin{smallmatrix} +0.05 \\ -0.3 \end{smallmatrix}$ HEX

FLAT AREA FOR SPANNER 13.3 $\begin{smallmatrix} +0.05 \\ -0.2 \end{smallmatrix}$

FLAT AREA FOR SPANNER
18 $\begin{smallmatrix} +0.05 \\ -0.3 \end{smallmatrix}$ HEX

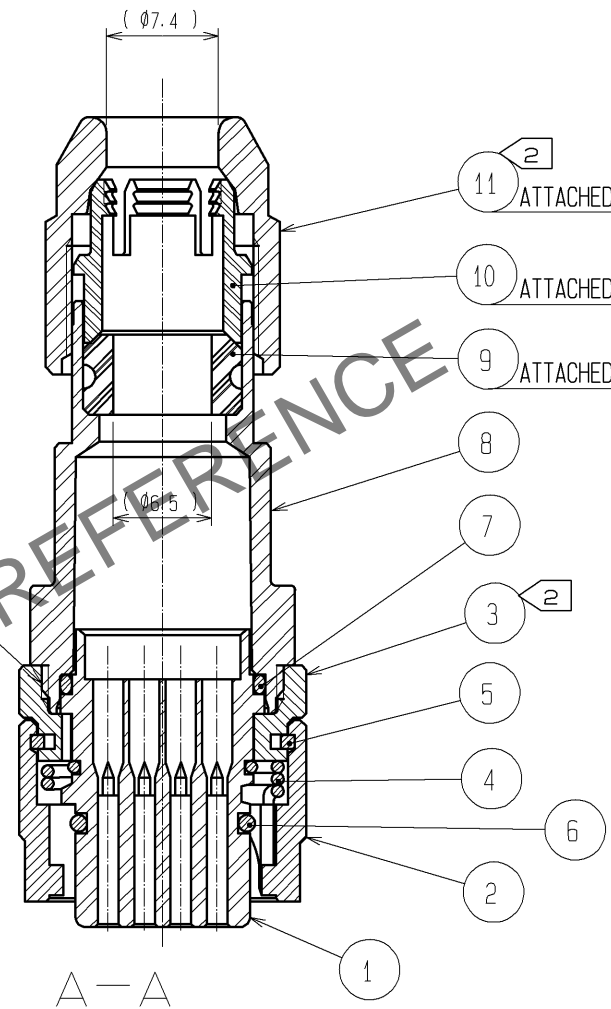
WHITE MARKINGS



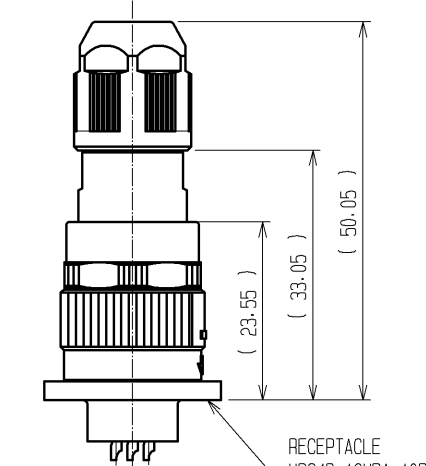
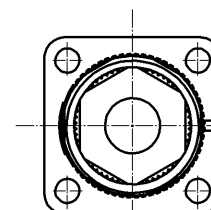
1 TABLE 1

APPLICABLE CRIMP CONTACT			
KIND	HRS No.	PART No.	APPLICABLE WIRE
LOOSE PIECE CONTACT	1134-0051-7	1HR34B-SC1-111	AWG#20~AWG#25
STRIP CONTACT	1134-0050-4	1HR34B-SC1-211	AWG#20~AWG#25
APPLICABLE TOOL			
KIND	ITEM	HRS No.	PART No.
HAND	HAND CRIMP TOOL	1150-0107-9	1HT304/HR34B-1
AUTOMA- TIC	AUTOMATIC CRIMPING MACHINE	901-0005-4	CM-105
	APPLICATOR	901-2051-2	AP105-HR34B-1
CONTACT EXTRACTION TOOL		150-0039-0	RP6-SC-TP

- NOTES
- TABLE 1 SHOWS APPLICABLE CRIMP CONTACT AND APPLICABLE TOOL.
 - THE RECOMMENDED TIGHTENING TORQUE, ADHESIVE AND PRIMER FOR M16X0.75 PORTION OF REF. NO. ③ AND ⑧ AND M13XL2P1 PORTION OF REF. NO. ⑧ AND ⑪ ARE AS FOLLOWS.
THE ADHESIVE AND PRIMER SHOULD BE ATTACHED ON THE MALE SCREW PORTION OF REF. NO. ⑧.
TIGHTENING TORQUE: 0.9 TO 1 N·m.
ADHESIVE: LOCTITE 243 MADE BY HENKEL JAPAN LTD.
PRIMER: LOCK PRIMER 7649, MADE BY HENKEL JAPAN LTD.
 - CONDUIT IS NOT APPLICABLE TO THIS CONNECTOR.
 - ROTATION EXAMPLES ARE SHOWN FOR REF. NO. ①, ③, ⑧ AND ⑪.
 - MAKE SURE THAT MARKING IS POSITIONED WITHIN 1 FROM THE CENTER OF CONNECTOR AS SHOWN IN FIG. 1. WHEN MATED TO THE APPLICABLE RECEPTACLE, OTHERWISE, THE CONNECTORS ARE NOT COMPLETELY MATED, AND INSERT THIS PLUG TO THE RECEPTACLE TO THE END UNTIL THE MARKING IS LOCATED IN THE CENTER OF THE CONNECTOR.



NOTES 6 CABLE CLAMP STRENGTH AND WATERPROOF PERFORMANCE DEPEND ON CABLE STRUCTURE SUCH AS THE JACKET MATERIAL AND HARDNESS. WE RECOMMEND CHECKING THE PERFORMANCE BEFORE THE USAGE.



MATING CONDITION(1:1)
(WHEN REF. NO. ⑪ IS FASTENED)

6	FLUORO RUBBER	(BLACK)							
5	PHOSPHOR BRONZE	NICKEL PLATING	1 1	POLYPHENYLENE SULFIDE	(BLACK)	UL94V-0			
4	STAINLESS STEEL		1 0	POLYAMIDE	(WHITE)	UL94V-0			
3	ZINC ALLOY	BLACK CHROME PLATING	9	HYDROGENATION ACRYLONITRILE BUTADIENE RUBBER	(BLACK)				
2	ZINC ALLOY	BLACK CHROME PLATING	8	POLYAMIDE	(BLACK)	UL94V-0			
1	POLYPHENYLENE SULFIDE	(BLACK)	UL94V-0	7	FLUORO RUBBER	(BLACK)			
NO.	MATERIAL	FINISH	REMARKS	NO.	MATERIAL	FINISH	REMARKS	NO.	MATERIAL
UNITS	mm	SCALE	2 : 1	COUNT	7	DESCRIPTION OF REVISIONS	DIS-C-002525	DESIGNED	MM. ISHII
								CHECKED	HY. KISHI
									DATE
									14. 10. 28
APPROVED : MO. SATOH				08. 05. 19		DRAWING NO. EDC3-115406-00			
CHECKED : SI. MATSUZAKI				08. 05. 19		PART NO. HR34B-12WPD-10SC			
DESIGNED : HT. ZENBA				08. 05. 13		CODE NO. CL134-0037-6-00			
DRAWN : HT. ZENBA				08. 05. 13					