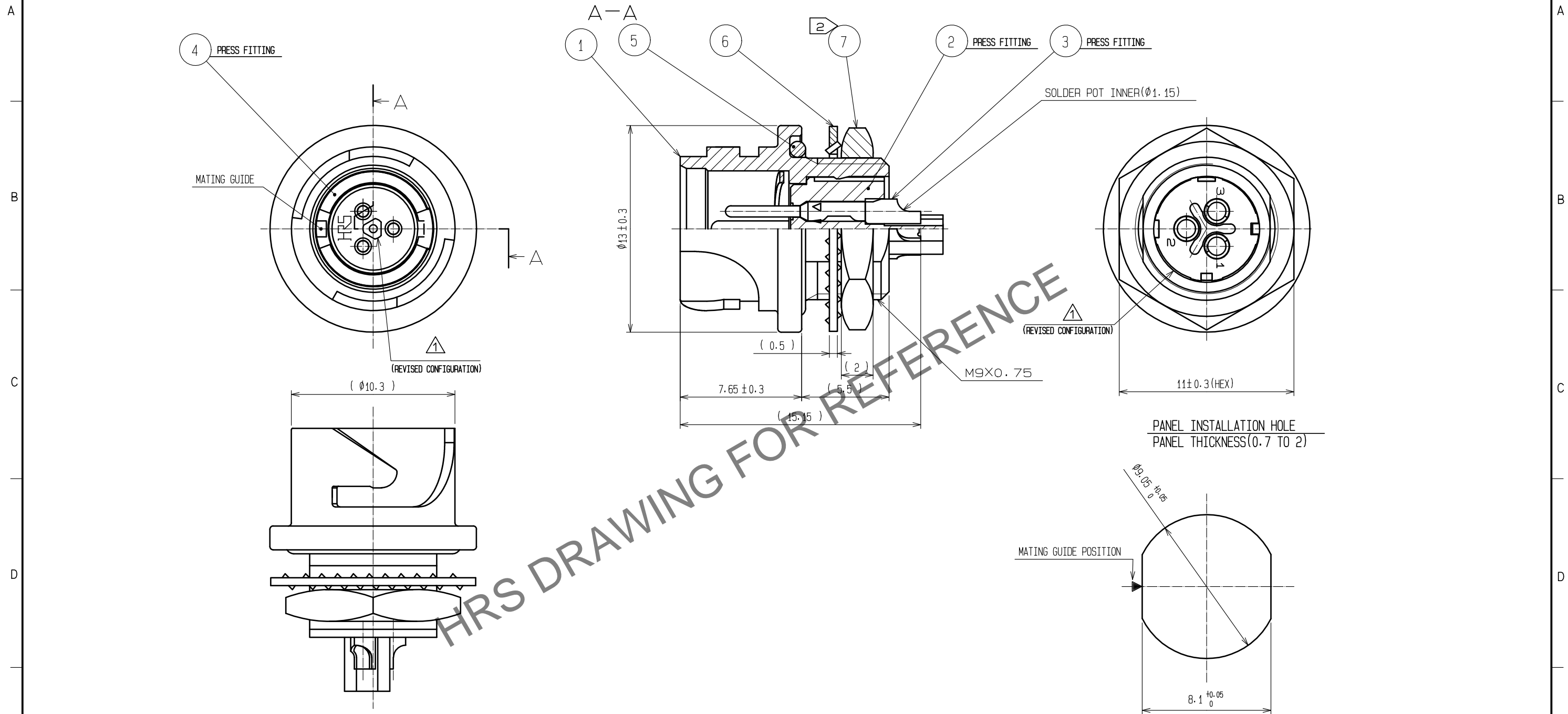


May.1.2024 Copyright 2024 HIROSE ELECTRIC CO., LTD. All Rights Reserved.  
In case of consideration for using Automotive equipment / device which demand high reliability, kindly contact our sales window correspondents.



NOTES ① PLATING(REF.NO.③)  
CONTACT AREA : GOLD 0.2μm min  
OTHERS : GOLD AND NICKEL  
UNDER PLATING : NICKEL 2μm min  
② THE RECOMMENDED CLAMP TORQUE OF REF.NO.⑦ TO BE 1.5 TO 2N·m.  
THREAD LOCKER TO THE THREADED PORTION OF REF.NO.① IS RECOMMENDED TO PREVENT REF.NO.⑦ FROM LOOSING.  
⚠ RECOMMENDED THREAD LOCKER:LOCTITE 263, HENKEL JAPAN LTD.  
③ WHEN THIS CONNECTOR IS MOUNTED ON TO PANEL, BE CAREFUL REF.NO.⑤ IS ASSEMBLED SURELY INTO THE GROOVE OF REF.NO.① AS SHOWN IN THIS FIGURE TO KEEP WATERPROOF EFFECTIVENESS.

4	PHOSPHOR BRONZE	NICKEL PLATING			
3	COPPER ALLOY	①	7	STEEL	NICKEL PLATING
2	PPS	(BLACK) UL94V-0	6	STEEL	NICKEL PLATING
1	ZINC ALLOY	NICKEL PLATING	5	CHLOROPRENE RUBBER	(BLACK)
NO.	MATERIAL	FINISH , REMARKS	NO.	MATERIAL	FINISH , REMARKS
UNITS mm		SCALE 4 : 1	COUNT 3	DESCRIPTION OF REVISIONS DIS-C-00001698	DESIGNED HY. KISHI
HIROSE ELECTRIC CO., LTD.		APPROVED : MR. YOSHIDA	05.01.05	DRAWING NO. EDC3-114148-00	
		CHECKED : MO. SATOH	05.01.05	PART NO. LF07WBR-3P	
		DESIGNED : YH. YAMADA	05.01.05	CODE NO. CL136-1003-2-00	
		DRAWN : YH. YAMADA	05.01.05		
					1/1