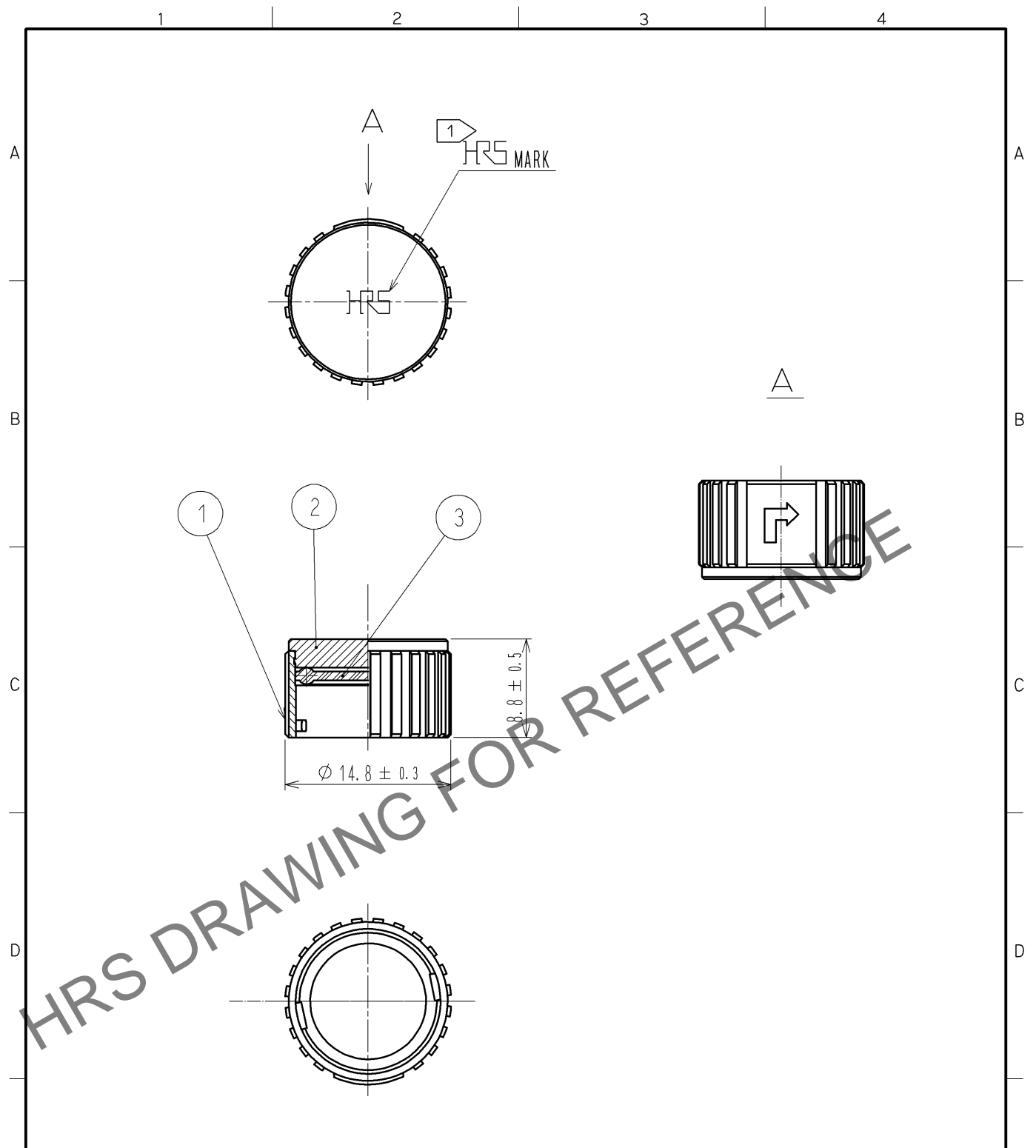


Apr.1.2024 Copyright 2024 HIROSE ELECTRIC CO., LTD. All Rights Reserved.
In case of consideration for using Automotive equipment / device which demand high reliability, kindly contact our sales window correspondents.



NOTES 1 ROTATION EXAMPLES OF HRS MARK ARE SHOWN.
2 THIS PRODUCT IS A CAP FOR LF10WBR※-※(※).
IT IS APPLICABLE REGARDLESS OF GIVEN ALPHABETS OR NUMBERS SHOWN AT ※.

2	BRASS	NICKEL PLATING					
1	ZINC ALLOY	NICKEL PLATING	3	SILICONE RUBBER	(BLACK)		
NO.	MATERIAL	FINISH . REMARKS	NO.	MATERIAL	FINISH . REMARKS		
UNITS mm		SCALE 2 : 1	COUNT 1	DESCRIPTION OF REVISIONS DIS-C-002963	DESIGNED MM. ISHII	CHECKED TP. KOMATSU	DATE 13. 04. 04
HIROSE ELECTRIC CO., LTD.		APPROVED : MO. SATOH	09. 05. 25	DRAWING NO.	EDC4-115795-00		
		CHECKED : HY. KISHI	09. 05. 23	PART NO.	LF10WBR-C		
		DESIGNED : TY. SUZUKI	09. 05. 22	CODE NO.	CL136-3001-8-00		
		DRAWN : TY. SUZUKI	09. 05. 22				1/1