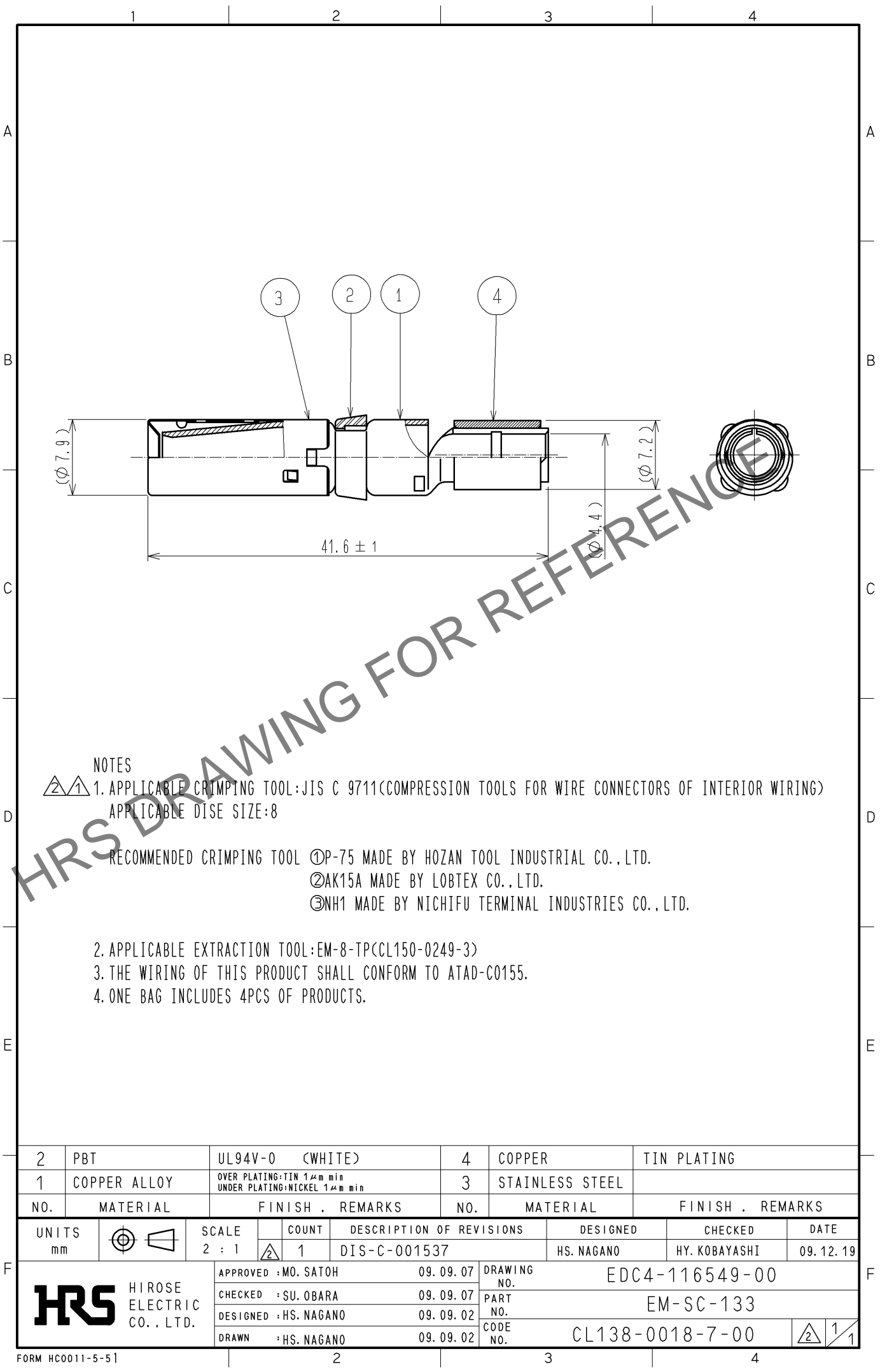
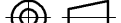
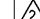



Mar.1.2024 Copyright 2024 HIROSE ELECTRIC CO., LTD. All Rights Reserved.
In case of consideration for using Automotive equipment / device which demand high reliability, kindly contact our sales window correspondents.



NOTES
1. APPLICABLE CRIMPING TOOL: JIS C 9711 (COMPRESSION TOOLS FOR WIRE CONNECTORS OF INTERIOR WIRING)
APPLICABLE DIE SIZE: 8
RECOMMENDED CRIMPING TOOL ①P-75 MADE BY HOZAN TOOL INDUSTRIAL CO., LTD.
②AK15A MADE BY LOBTEX CO., LTD.
③NH1 MADE BY NICHIFU TERMINAL INDUSTRIES CO., LTD.
2. APPLICABLE EXTRACTION TOOL: EM-8-TP (CL150-0249-3)
3. THE WIRING OF THIS PRODUCT SHALL CONFORM TO ATAD-C0155.
4. ONE BAG INCLUDES 4PCS OF PRODUCTS.

2	PBT	UL94V-0 (WHITE)		4	COPPER	TIN PLATING		
1	COPPER ALLOY	OVER PLATING:TIN 1μm min UNDER PLATING:NICKEL 1μm min		3	STAINLESS STEEL			
NO.	MATERIAL	FINISH . REMARKS		NO.	MATERIAL	FINISH . REMARKS		
UNITS mm		SCALE 2 : 1	COUNT  1	DESCRIPTION OF REVISIONS DIS-C-001537		DESIGNED HS. NAGANO	CHECKED HY. KOBAYASHI	DATE 09.12.19
 HIROSE ELECTRIC CO., LTD.		APPROVED : MO. SATOH	09.09.07	DRAWING NO. EDC4-116549-00				
		CHECKED : SU. OBARA	09.09.07	PART NO. EM-SC-133				
		DESIGNED : HS. NAGANO	09.09.02	CODE NO. CL138-0018-7-00				
		DRAWN : HS. NAGANO	09.09.02	