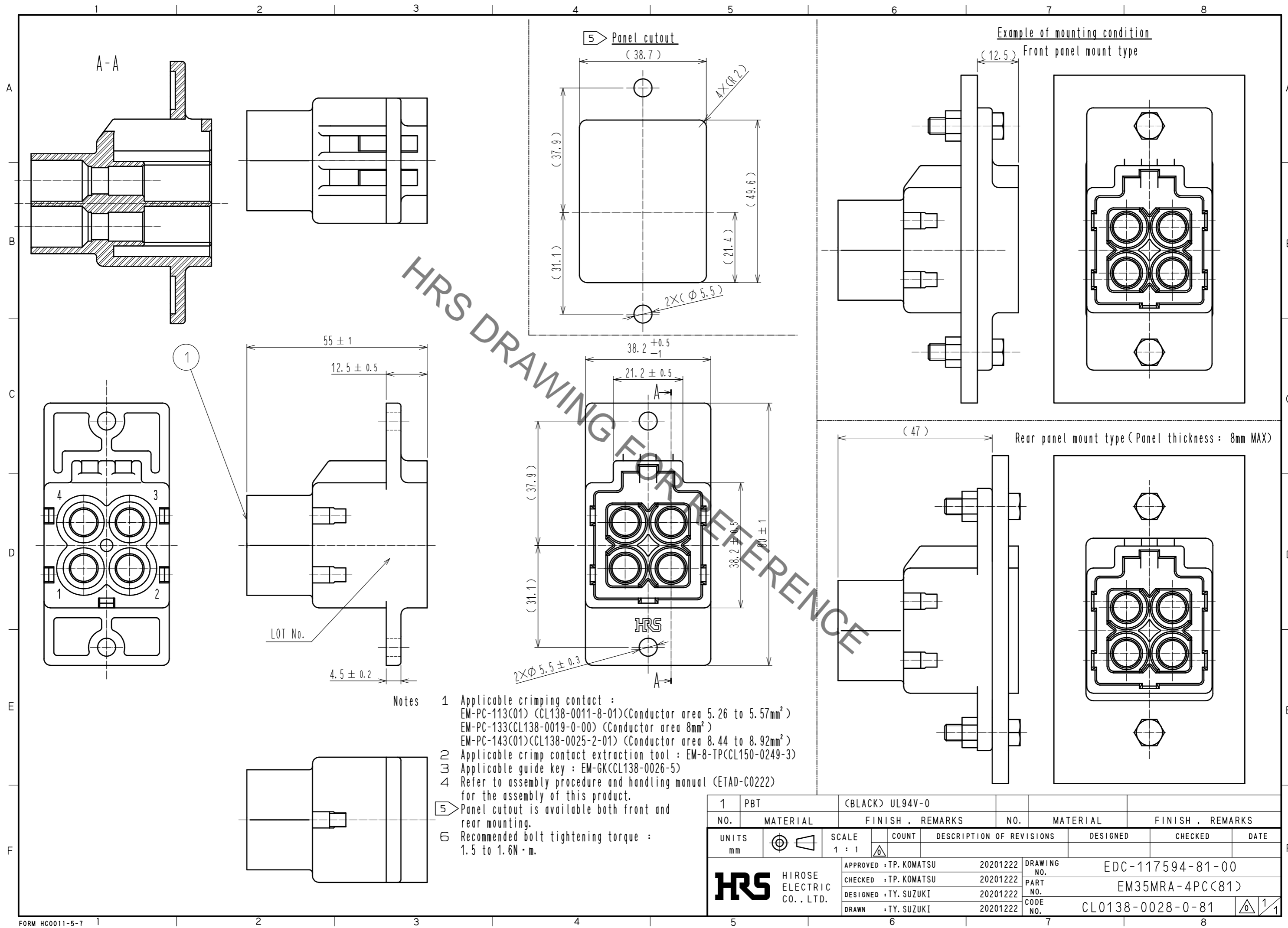


Sep.1.2021 Copyright 2021 HIROSE ELECTRIC CO., LTD. All Rights Reserved.  
In case of consideration for using Automotive equipment / device which demand high reliability, kindly contact our sales window correspondents.



HRS DRAWING FOR REFERENCE

**Notes**

- 1 Applicable crimping contact :  
EM-PC-113(O1) (CL138-0011-8-01) (Conductor area 5.26 to 5.57mm<sup>2</sup>)  
EM-PC-133(CL138-0019-0-00) (Conductor area 8mm<sup>2</sup>)  
EM-PC-143(O1)(CL138-0025-2-01) (Conductor area 8.44 to 8.92mm<sup>2</sup>)
- 2 Applicable crimp contact extraction tool : EM-8-TP(CL150-0249-3)
- 3 Applicable guide key : EM-GK(CL138-0026-5)
- 4 Refer to assembly procedure and handling manual (ETAD-C0222) for the assembly of this product.
- 5 Panel cutout is available both front and rear mounting.
- 6 Recommended bolt tightening torque : 1.5 to 1.6N·m.

1	PBT	(BLACK) UL94V-0					
NO.	MATERIAL	FINISH . REMARKS	NO.	MATERIAL	FINISH . REMARKS		
UNITS		SCALE	COUNT	DESCRIPTION OF REVISIONS			DESIGNED
mm		1 : 1					CHECKED
<b>HRS</b> HIROSE ELECTRIC CO., LTD.		APPROVED : TP. KOMATSU	20201222	DRAWING NO.		EDC-117594-81-00	
		CHECKED : TP. KOMATSU	20201222	PART NO.		EM35MRA-4PC(81)	
		DESIGNED : TY. SUZUKI	20201222	CODE NO.		CL0138-0028-0-81	
		DRAWN : TY. SUZUKI	20201222			1/1	