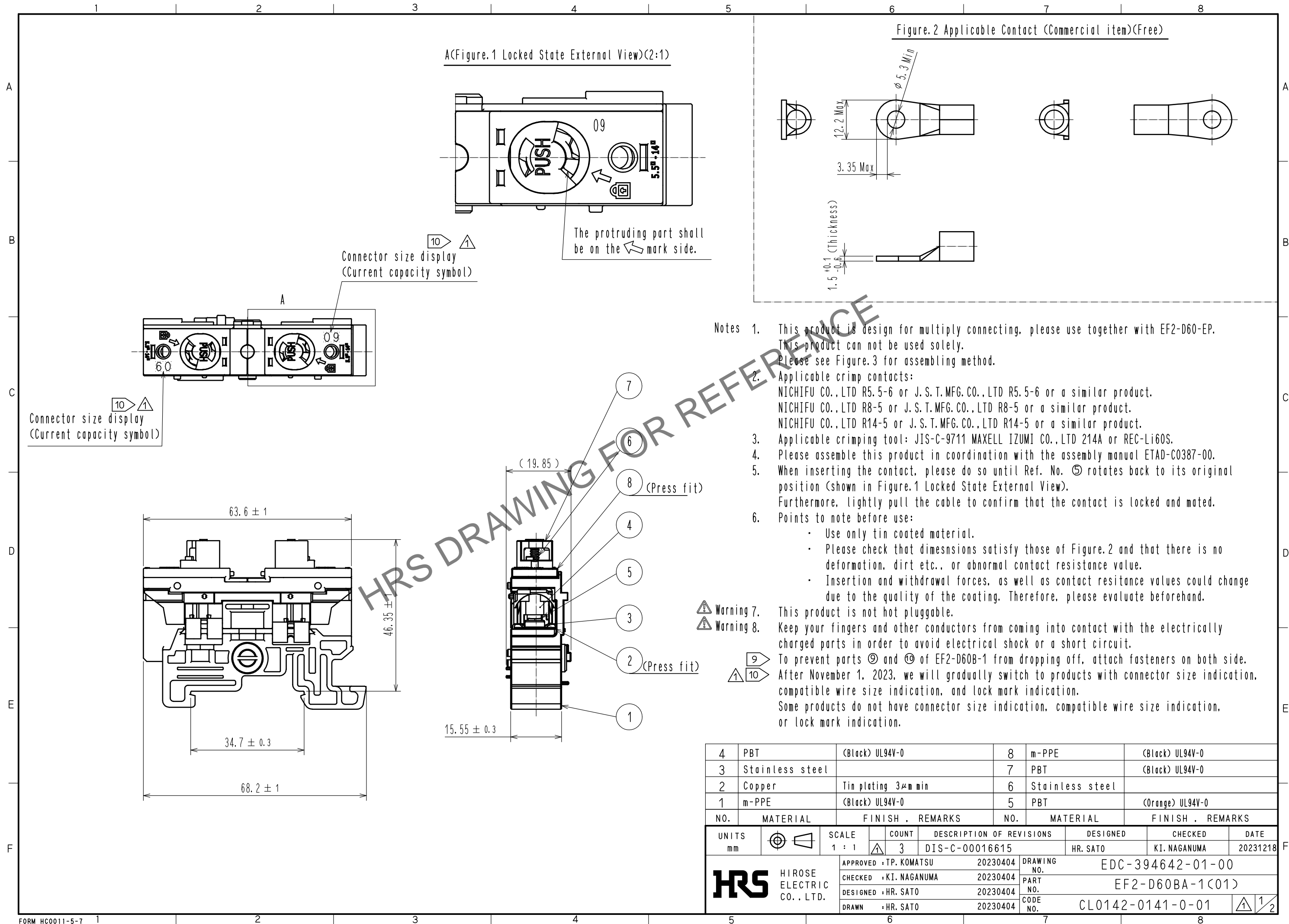


May.1.2024 Copyright 2024 HIROSE ELECTRIC CO., LTD. All Rights Reserved.  
In case of consideration for using Automotive equipment / device which demand high reliability, kindly contact our sales window correspondents.



May.1.2024 Copyright 2024 HIROSE ELECTRIC CO., LTD. All Rights Reserved.  
In case of consideration for using Automotive equipment / device which demand high reliability, kindly contact our sales window correspondents.

Figure.3 How to stack EF2-D60. (Example: 3 connectors)

The stacking method is as follows.

Connector : EF2-D60BA-1(01) 3pcs  
End Plate : EF2-D60-EP1 1set

Place the three EF2-D60BA-1(01) in a row  
and install EF2-D60-EP1 on both sides.

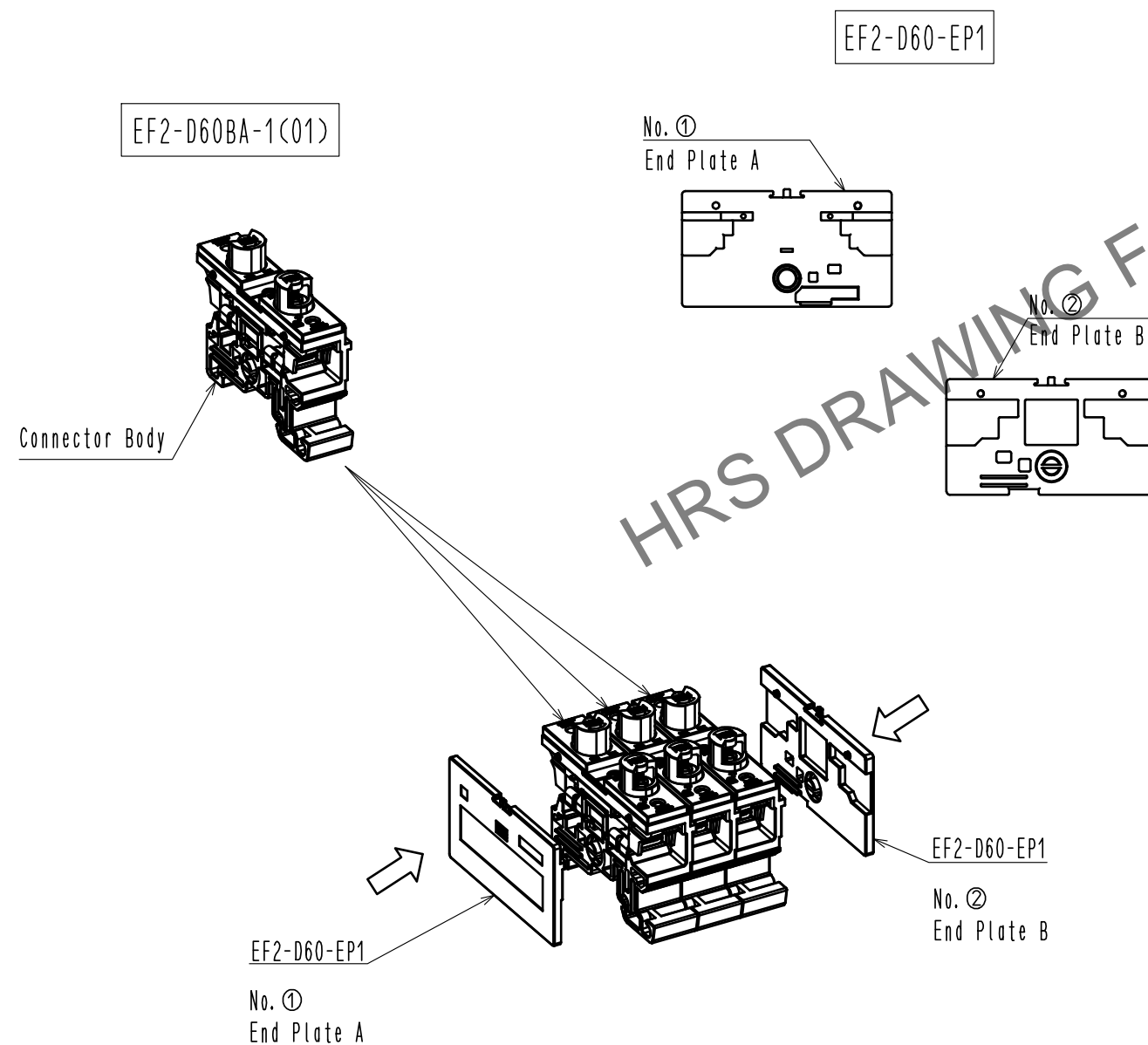
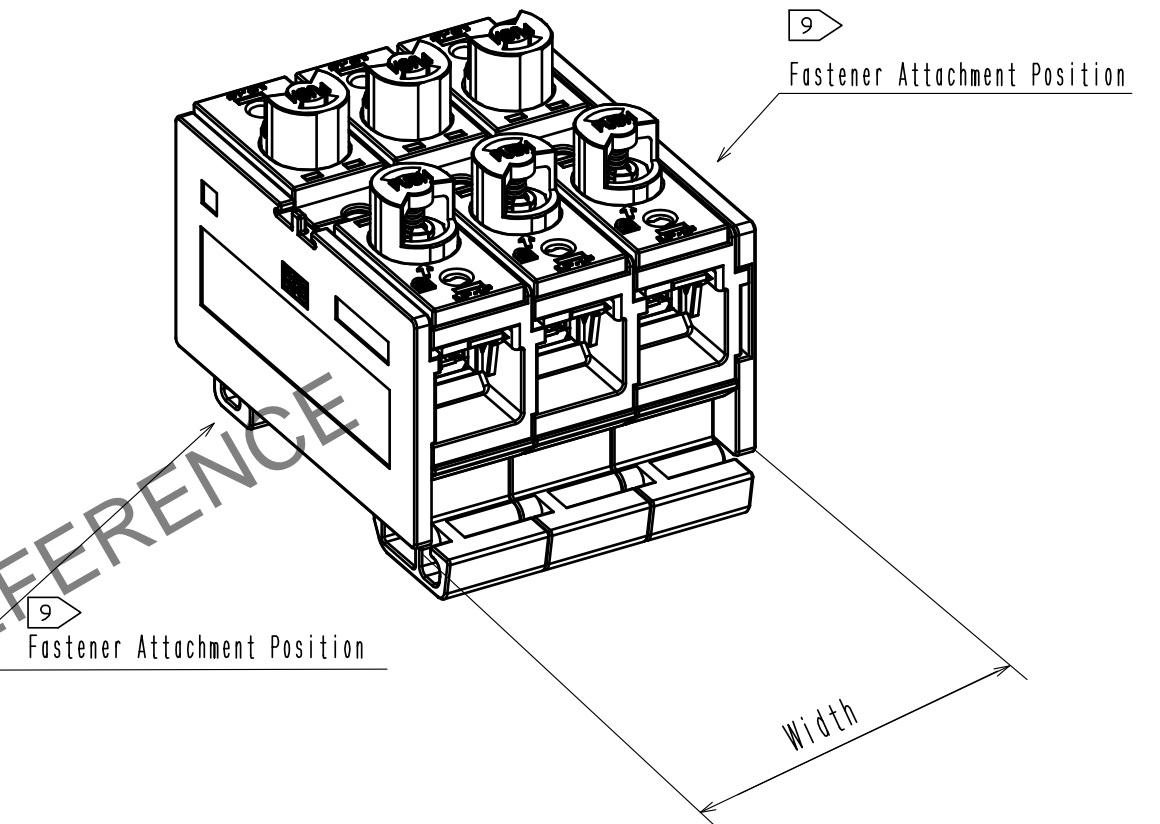


Figure.4 From Connector to Connectors



Number of Connector	1	2	3	4	5	$\text{N}$
Width	21.0	36.55	52.1	67.65	83.2	$5.45+15.55 \times \text{N}$

HRS

DRAWING NO. EDC-394642-01-00  
PART NO. EF2-D60BA-1(01)  
CODE NO. CL0142-0141-0-01

2/2