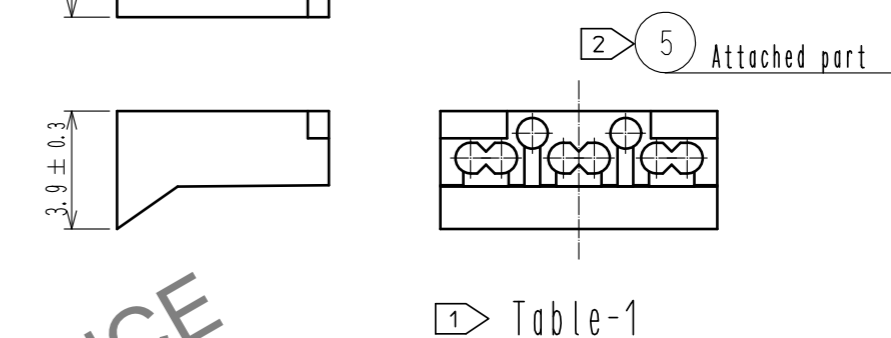
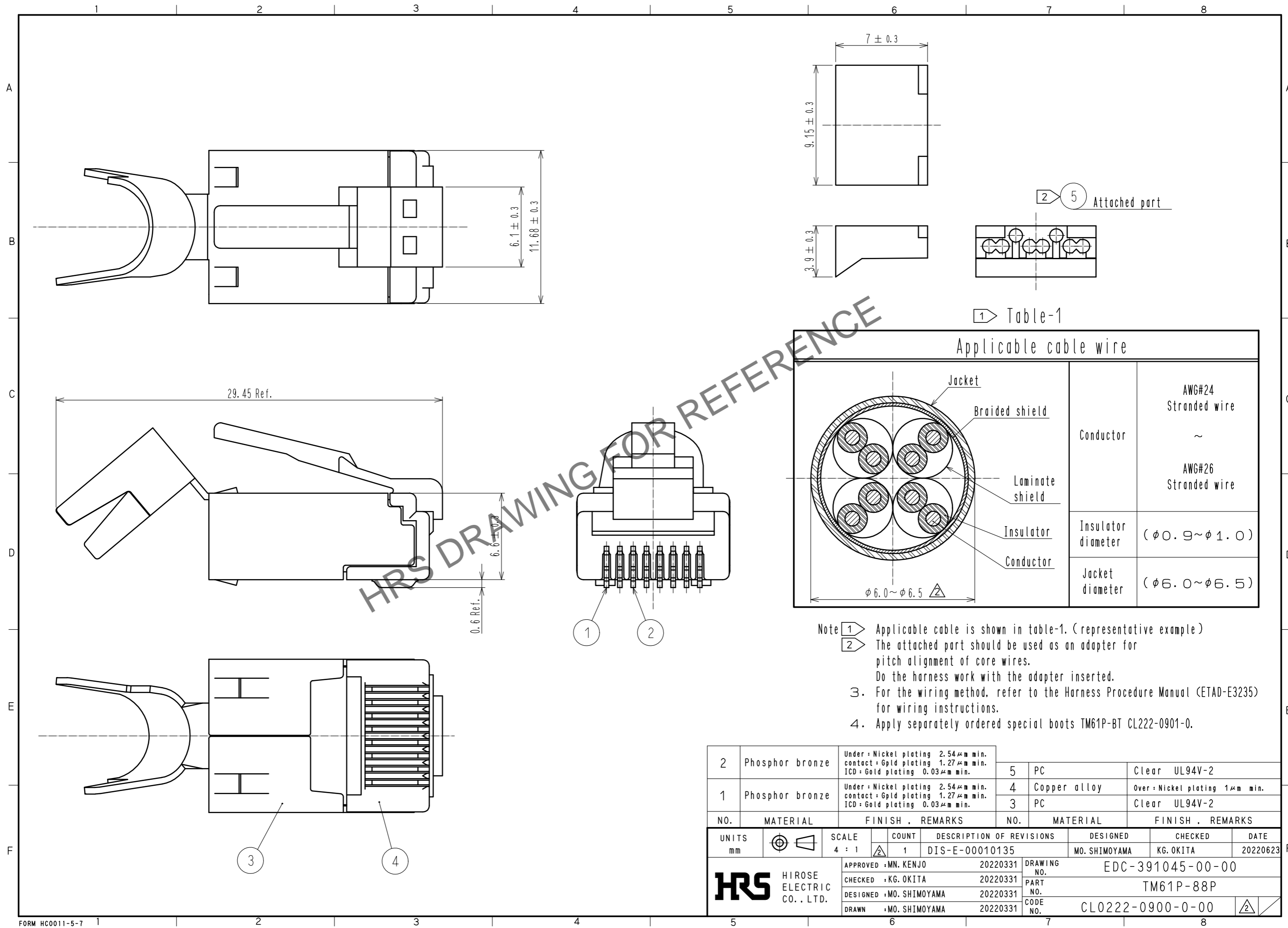


Aug.1.2024 Copyright 2024 HIROSE ELECTRIC CO., LTD. All Rights Reserved.  
In case of consideration for using Automotive equipment / device which demand high reliability, kindly contact our sales window correspondents.



① Table-1

| Applicable cable wire |  |             |               |
|-----------------------|--|-------------|---------------|
| Conductor             |  | AWG#24      | Stranded wire |
|                       |  | ~           |               |
| Insulator diameter    |  | AWG#26      | Stranded wire |
|                       |  | (φ0.9~φ1.0) |               |
| Jacket diameter       |  | (φ6.0~φ6.5) |               |

- Note ① Applicable cable is shown in table-1. (representative example)  
 ② The attached part should be used as an adapter for pitch alignment of core wires. Do the harness work with the adapter inserted.  
 3. For the wiring method, refer to the Harness Procedure Manual (ETAD-E3235) for wiring instructions.  
 4. Apply separately ordered special boots TM61P-BT CL222-0901-0.

| 2                                    | Phosphor bronze | Under : Nickel plating 2.54μm min.<br>contact : Gpld plating 1.27μm min.<br>ICD : Gold plating 0.03μm min. | 5          | PC   | Clear UL94V-2                  |
|--------------------------------------|-----------------|--|------------|--|--------------------------------|
| 1                                    | Phosphor bronze | Under : Nickel plating 2.54μm min.<br>contact : Gpld plating 1.27μm min.<br>ICD : Gold plating 0.03μm min. | 4          | Copper alloy                               | Over : Nickel plating 1μm min. |
|                                      |                 |  | 3          | PC   | Clear UL94V-2                  |
| NO.                                  | MATERIAL        | FINISH . REMARKS   | NO.        | MATERIAL                                   | FINISH . REMARKS               |
| UNITS<br>mm                          |                 | SCALE<br>4 : 1   | COUNT<br>1 | DESCRIPTION OF REVISIONS<br>DIS-E-00010135 |                                |
| DESIGNED<br>MO. SHIMUYAMA            |                 | CHECKED<br>KG. OKITA   |            | DATE<br>20220623                           |                                |
| APPROVED : MN. KENJO<br>20220331     |                 | DRAWING NO.<br>EDC-391045-00-00  |            |  |                                |
| CHECKED : KG. OKITA<br>20220331      |                 | PART NO.<br>TM61P-88P  |            |  |                                |
| DESIGNED : MO. SHIMUYAMA<br>20220331 |                 | CODE NO.<br>CL0222-0900-0-00   |            |  |                                |
| DRAWN : MO. SHIMUYAMA<br>20220331    |                 |  |            |  |                                |