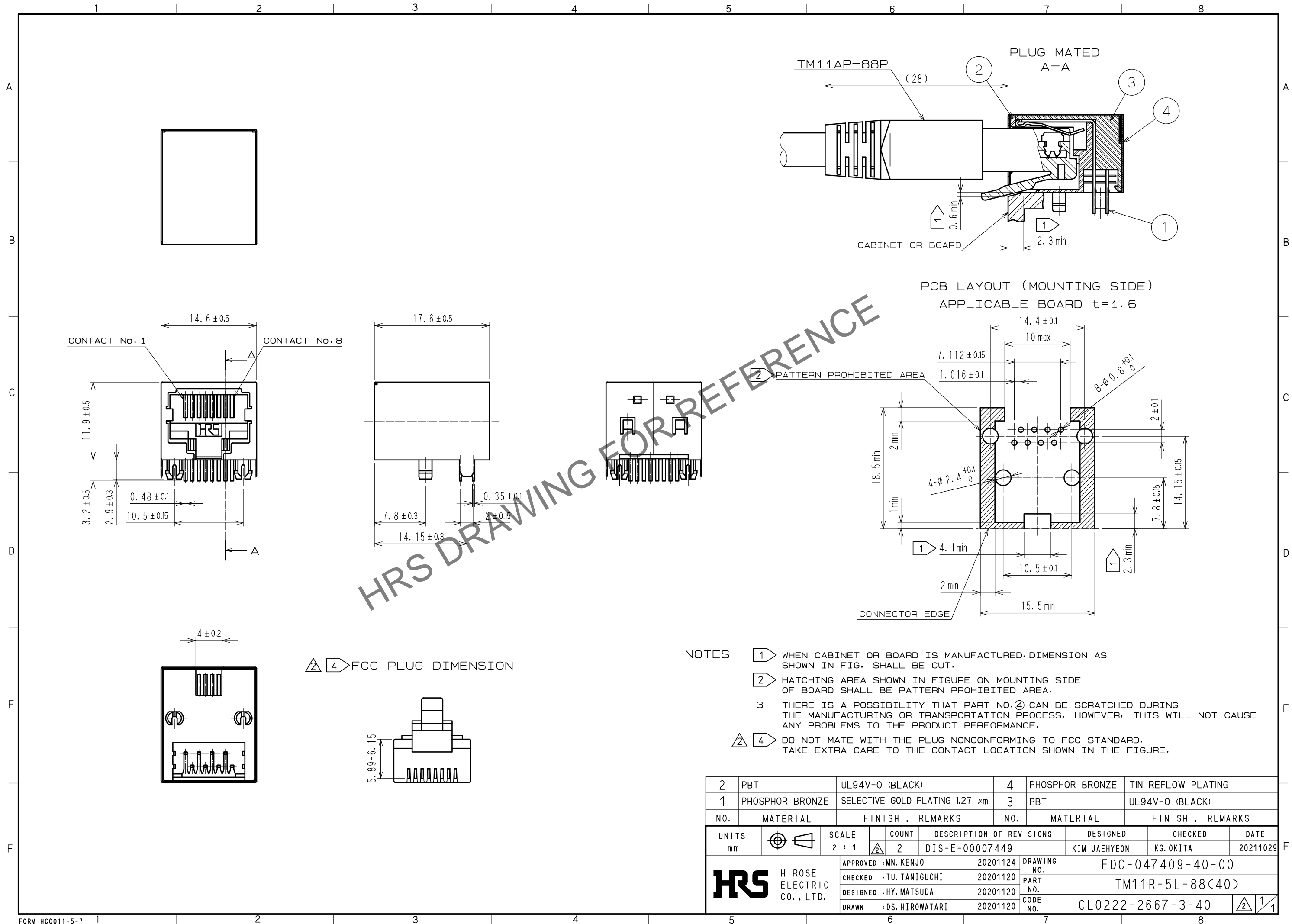


Apr.1.2024 Copyright 2024 HIROSE ELECTRIC CO., LTD. All Rights Reserved.
In case of consideration for using Automotive equipment / device which demand high reliability, kindly contact our sales window correspondents.



- NOTES
- 1 WHEN CABINET OR BOARD IS MANUFACTURED, DIMENSION AS SHOWN IN FIG. SHALL BE CUT.
 - 2 HATCHING AREA SHOWN IN FIGURE ON MOUNTING SIDE OF BOARD SHALL BE PATTERN PROHIBITED AREA.
 - 3 THERE IS A POSSIBILITY THAT PART NO. ④ CAN BE SCRATCHED DURING THE MANUFACTURING OR TRANSPORTATION PROCESS. HOWEVER, THIS WILL NOT CAUSE ANY PROBLEMS TO THE PRODUCT PERFORMANCE.
 - ④ DO NOT MATE WITH THE PLUG NONCONFORMING TO FCC STANDARD. TAKE EXTRA CARE TO THE CONTACT LOCATION SHOWN IN THE FIGURE.

2	PBT	UL94V-0 (BLACK)	4	PHOSPHOR BRONZE	TIN REFLOW PLATING
1	PHOSPHOR BRONZE	SELECTIVE GOLD PLATING 1.27 μm	3	PBT	UL94V-0 (BLACK)
NO.	MATERIAL	FINISH . REMARKS	NO.	MATERIAL	FINISH . REMARKS
UNITS mm		SCALE 2 : 1	COUNT 2	DESCRIPTION OF REVISIONS DIS-E-00007449	DESIGNED KIM JAEHYEON
		APPROVED : MN. KENJO	20201124	DRAWING NO.	EDC-047409-40-00
		CHECKED : TU. TANIGUCHI	20201120	PART NO.	TM11R-5L-88(40)
		DESIGNED : HY. MATSUDA	20201120	CODE NO.	CL0222-2667-3-40
		DRAWN : DS. HIROWATARI	20201120		
					DATE 20211029