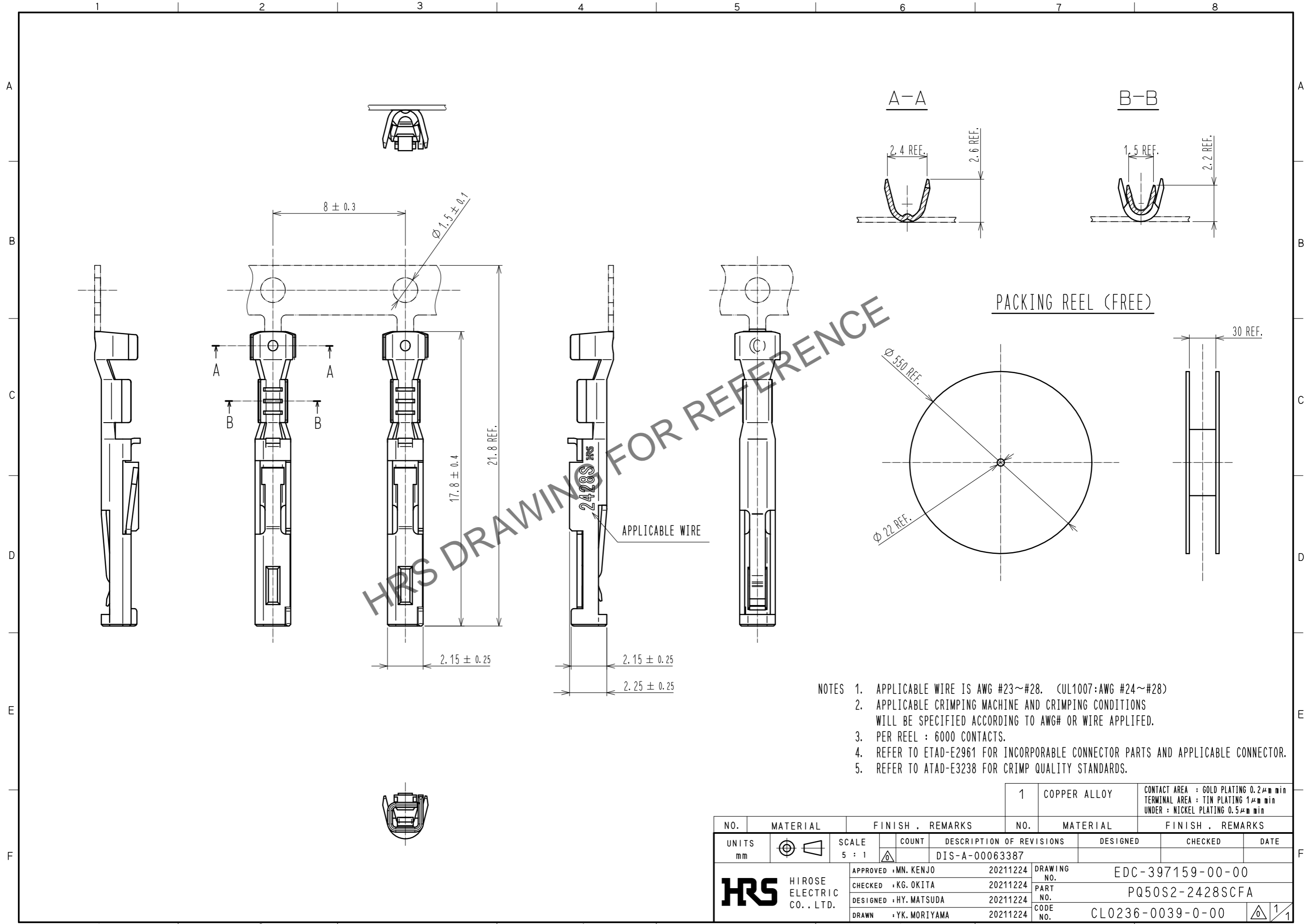


Apr.1.2026 Copyright 2026 HIROSE ELECTRIC CO., LTD. All Rights Reserved.
 In case of consideration for using Automotive equipment / device which demand high reliability, kindly contact our sales window correspondents.



- NOTES
1. APPLICABLE WIRE IS AWG #23~#28. (UL1007:AWG #24~#28)
 2. APPLICABLE CRIMPING MACHINE AND CRIMPING CONDITIONS WILL BE SPECIFIED ACCORDING TO AWG# OR WIRE APPLIED.
 3. PER REEL : 6000 CONTACTS.
 4. REFER TO ETAD-E2961 FOR INCORPORABLE CONNECTOR PARTS AND APPLICABLE CONNECTOR.
 5. REFER TO ATAD-E3238 FOR CRIMP QUALITY STANDARDS.

NO.		MATERIAL		FINISH . REMARKS		NO.		MATERIAL		FINISH . REMARKS	
		1		COPPER ALLOY				CONTACT AREA : GOLD PLATING 0.2µm min		TERMINAL AREA : TIN PLATING 1µm min	
				UNDER : NICKEL PLATING 0.5µm min							
UNITS		SCALE		COUNT		DESCRIPTION OF REVISIONS		DESIGNED		CHECKED	
mm		5 : 1		△		DIS-A-00063387				DATE	
HIROSE ELECTRIC CO., LTD.		APPROVED : MN. KENJO		20211224		DRAWING NO.		EDC-397159-00-00			
		CHECKED : KG. OKITA		20211224		PART NO.		PQ50S2-2428SCFA			
		DESIGNED : HY. MATSUDA		20211224		CODE NO.		CL0236-0039-0-00			
		DRAWN : YK. MORIYAMA		20211224				1/1			