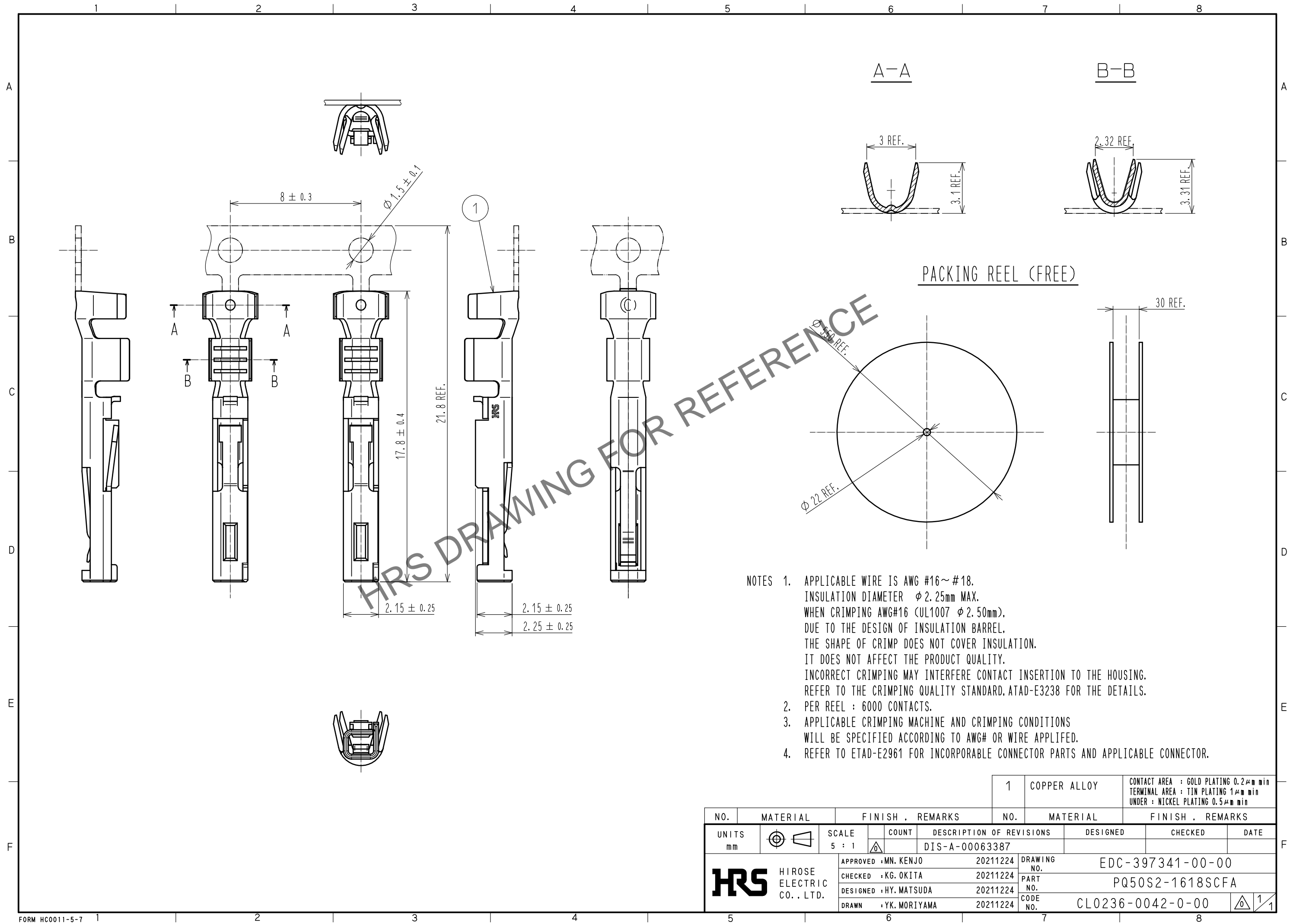


Mar.1.2024 Copyright 2024 HIROSE ELECTRIC CO., LTD. All Rights Reserved.  
In case of consideration for using Automotive equipment / device which demand high reliability, kindly contact our sales window correspondents.



- NOTES 1. APPLICABLE WIRE IS AWG #16~#18.  
INSULATION DIAMETER  $\phi 2.25\text{mm}$  MAX.  
WHEN CRIMPING AWG#16 (UL1007  $\phi 2.50\text{mm}$ ),  
DUE TO THE DESIGN OF INSULATION BARREL,  
THE SHAPE OF CRIMP DOES NOT COVER INSULATION.  
IT DOES NOT AFFECT THE PRODUCT QUALITY.  
INCORRECT CRIMPING MAY INTERFERE CONTACT INSERTION TO THE HOUSING.  
REFER TO THE CRIMPING QUALITY STANDARD, ATAD-E3238 FOR THE DETAILS.
2. PER REEL : 6000 CONTACTS.
3. APPLICABLE CRIMPING MACHINE AND CRIMPING CONDITIONS  
WILL BE SPECIFIED ACCORDING TO AWG# OR WIRE APPLIED.
4. REFER TO ETAD-E2961 FOR INCORPORABLE CONNECTOR PARTS AND APPLICABLE CONNECTOR.

				1		COPPER ALLOY		CONTACT AREA : GOLD PLATING 0.2μm min TERMINAL AREA : TIN PLATING 1μm min UNDER : NICKEL PLATING 0.5μm min		
NO.	MATERIAL		FINISH . REMARKS			NO.	MATERIAL		FINISH . REMARKS	
UNITS mm		SCALE 5 : 1		COUNT	DESCRIPTION OF REVISIONS DIS-A-00063387		DESIGNED		CHECKED	DATE
HIROSE ELECTRIC CO., LTD.			APPROVED : MN. KENJO		20211224	DRAWING NO.		EDC-397341-00-00		
			CHECKED : KG. OKITA		20211224	PART NO.		PQ50S2-1618SCFA		
			DESIGNED : HY. MATSUDA		20211224	CODE NO.		CL0236-0042-0-00		
			DRAWN : YK. MORIYAMA		20211224				1	1