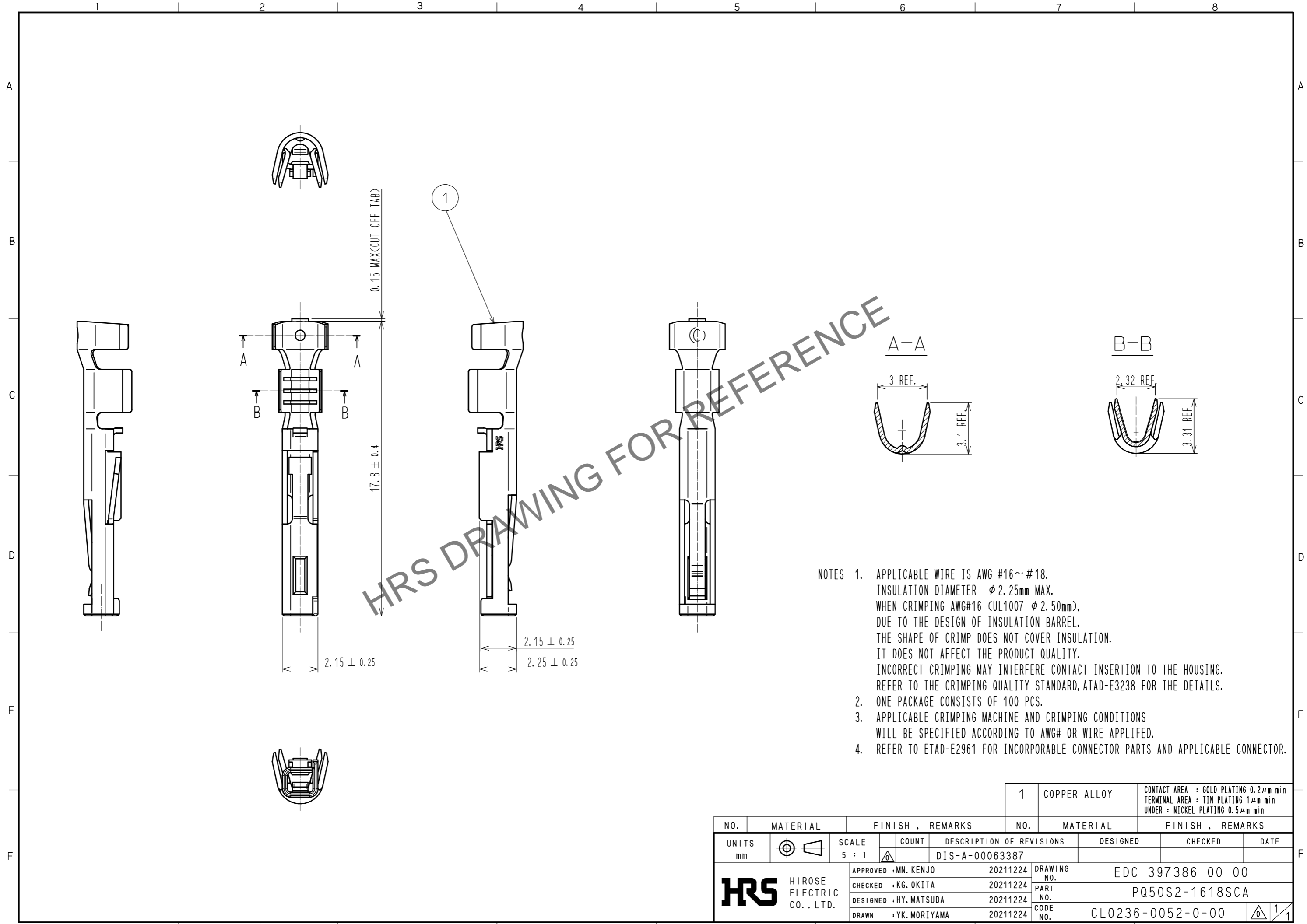


Oct.1.2024 Copyright 2024 HIROSE ELECTRIC CO., LTD. All Rights Reserved.
 In case of consideration for using Automotive equipment / device which demand high reliability, kindly contact our sales window correspondents.



HRS DRAWING FOR REFERENCE

- NOTES
1. APPLICABLE WIRE IS AWG #16~#18.
 INSULATION DIAMETER $\phi 2.25\text{mm}$ MAX.
 WHEN CRIMPING AWG#16 (UL1007 $\phi 2.50\text{mm}$),
 DUE TO THE DESIGN OF INSULATION BARREL,
 THE SHAPE OF CRIMP DOES NOT COVER INSULATION.
 IT DOES NOT AFFECT THE PRODUCT QUALITY.
 INCORRECT CRIMPING MAY INTERFERE CONTACT INSERTION TO THE HOUSING.
 REFER TO THE CRIMPING QUALITY STANDARD, ATAD-E3238 FOR THE DETAILS.
 2. ONE PACKAGE CONSISTS OF 100 PCS.
 3. APPLICABLE CRIMPING MACHINE AND CRIMPING CONDITIONS
 WILL BE SPECIFIED ACCORDING TO AWG# OR WIRE APPLIED.
 4. REFER TO ETAD-E2961 FOR INCORPORABLE CONNECTOR PARTS AND APPLICABLE CONNECTOR.

NO.		MATERIAL		FINISH . REMARKS		NO.		MATERIAL		FINISH . REMARKS	
		1		COPPER ALLOY				CONTACT AREA : GOLD PLATING 0.2 μm min		TERMINAL AREA : TIN PLATING 1 μm min	
				UNDER : NICKEL PLATING 0.5 μm min							
UNITS		SCALE		COUNT		DESCRIPTION OF REVISIONS		DESIGNED		CHECKED	
mm		5 : 1		△		DIS-A-00063387					
HIROSE ELECTRIC CO., LTD.		APPROVED : MN. KENJO		20211224		DRAWING NO.		EDC-397386-00-00			
		CHECKED : KG. OKITA		20211224		PART NO.		PQ50S2-1618SCA			
		DESIGNED : HY. MATSUDA		20211224		CODE NO.		CL0236-0052-0-00			
		DRAWN : YK. MORIYAMA		20211224							