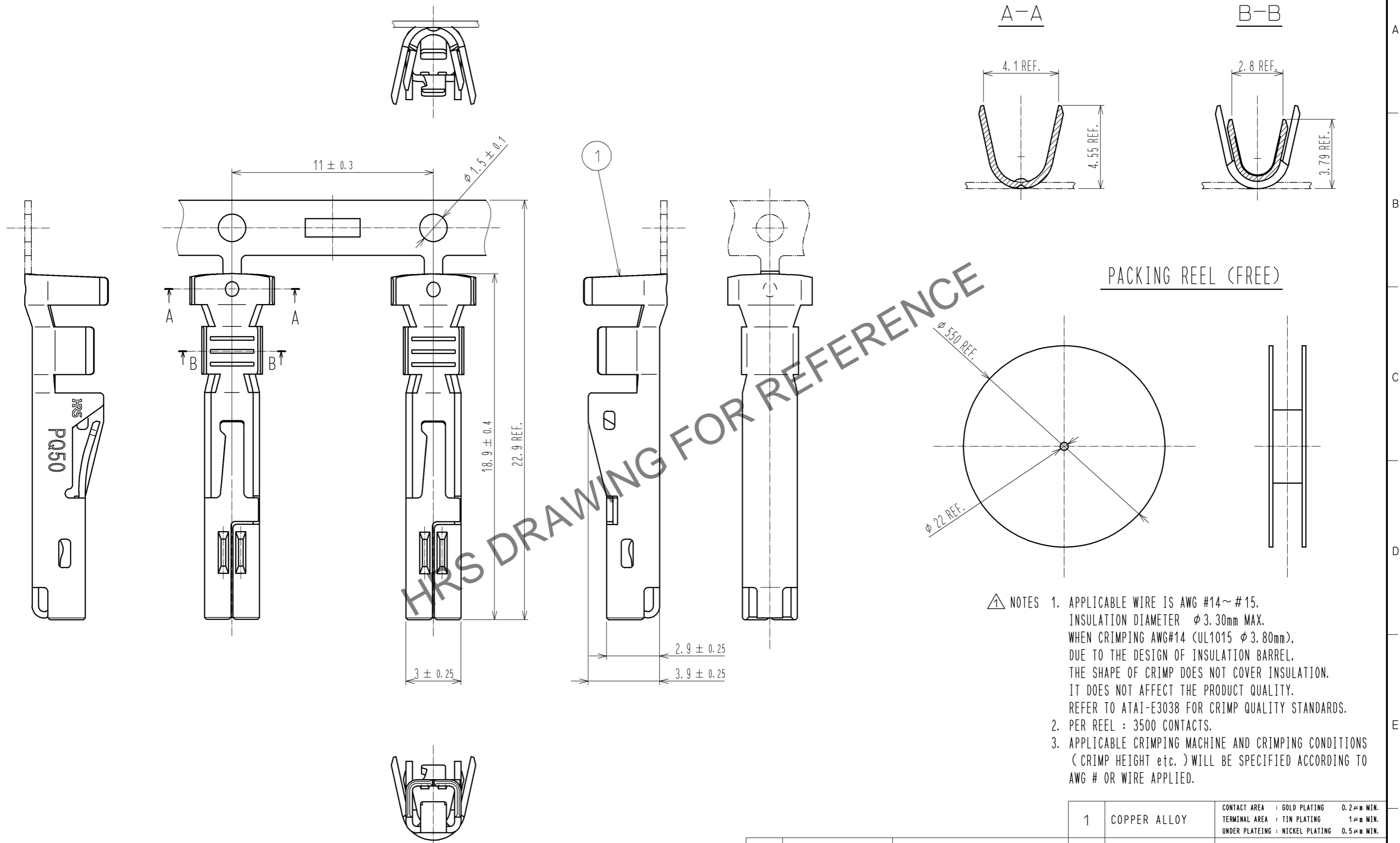


Oct.1.2024 Copyright 2024 HIROSE ELECTRIC CO., LTD. All Rights Reserved.
 In case of consideration for using Automotive equipment / device which demand high reliability, kindly contact our sales window correspondents.



- △ NOTES
1. APPLICABLE WIRE IS AWG #14~#15.
 INSULATION DIAMETER φ 3.30mm MAX.
 WHEN CRIMPING AWG#14 (UL1015 φ 3.80mm),
 DUE TO THE DESIGN OF INSULATION BARREL,
 THE SHAPE OF CRIMP DOES NOT COVER INSULATION.
 IT DOES NOT AFFECT THE PRODUCT QUALITY.
 REFER TO ATAI-E3038 FOR CRIMP QUALITY STANDARDS.
 2. PER REEL : 3500 CONTACTS.
 3. APPLICABLE CRIMPING MACHINE AND CRIMPING CONDITIONS
 (CRIMP HEIGHT etc.) WILL BE SPECIFIED ACCORDING TO
 AWG # OR WIRE APPLIED.

1	COPPER ALLOY	CONTACT AREA : GOLD PLATING 0.2μm MIN. TERMINAL AREA : TIN PLATING 1μm MIN. UNDER PLATING : NICKEL PLATING 0.5μm MIN.
---	--------------	---

NO.	MATERIAL	FINISH , REMARKS	NO.	MATERIAL	FINISH , REMARKS
UNITS mm		SCALE 5 : 1	COUNT 1	DESCRIPTION OF REVISIONS DIS-E-004877	DESIGNED TY. MIURA
HRS HIROSE ELECTRIC CO., LTD.		APPROVED : RI. TAKAYASU 13.06.24	DESIGNED TY. MIURA	CHECKED AH. KODAMA	DATE 13.12.20
		CHECKED : AH. KODAMA 13.06.24	DRAWING NO. EDC3-127172-00		
		DESIGNED : YH. MAMADA 13.06.21	PART NO. PQ50-15SCFA		
		DRAWN : YH. MAMADA 13.06.21	CODE NO. CL236-2017-0-00		