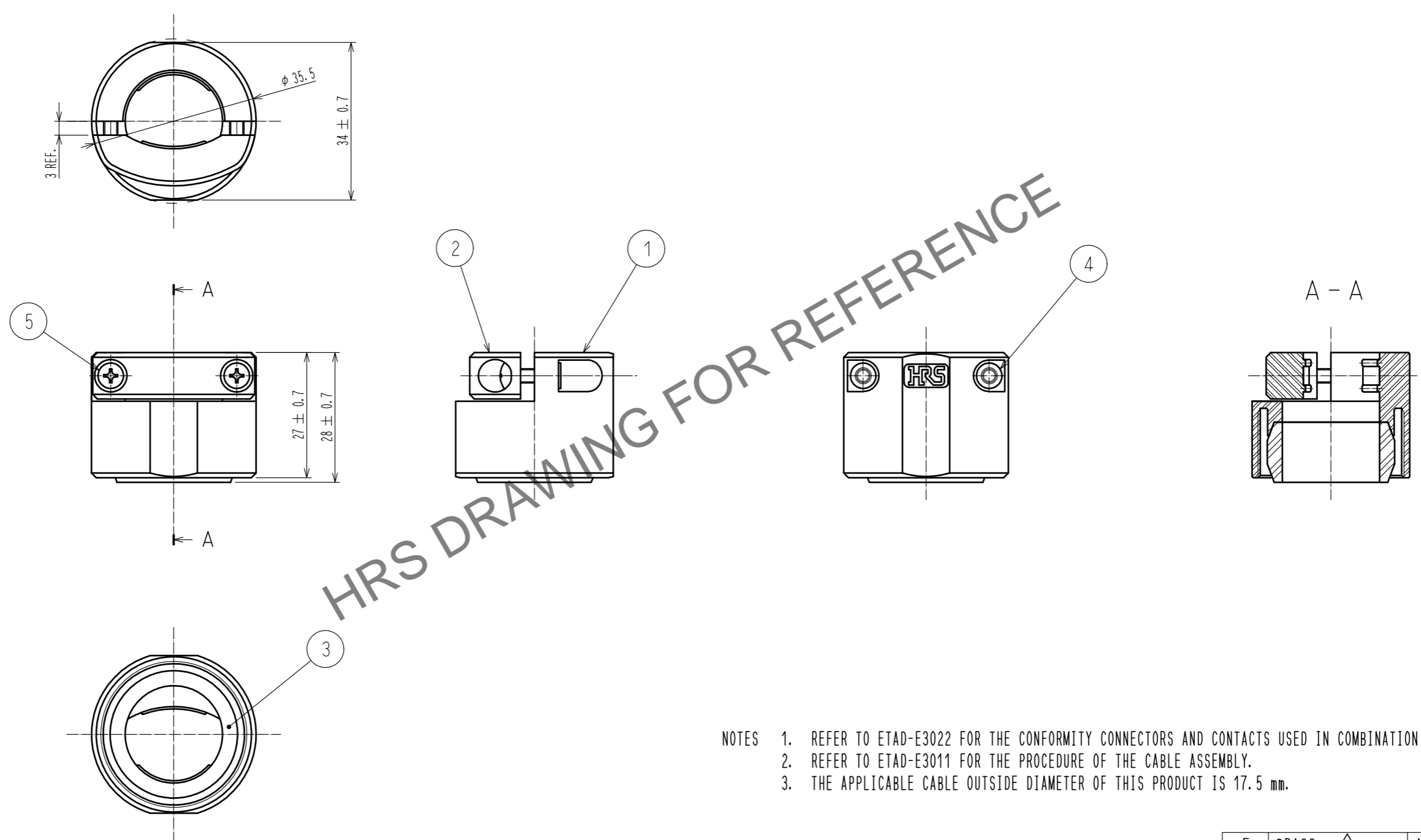


Oct.1.2024 Copyright 2024 HIROSE ELECTRIC CO., LTD. All Rights Reserved.  
 In case of consideration for using Automotive equipment / device which demand high reliability, kindly contact our sales window correspondents.

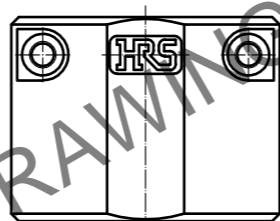
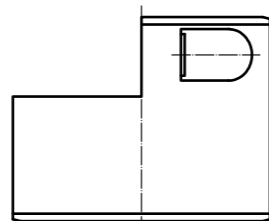
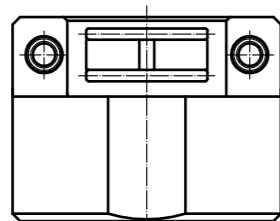
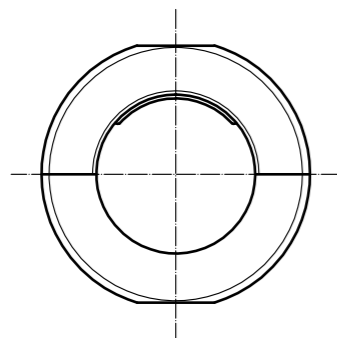


- NOTES
1. REFER TO ETAD-E3022 FOR THE CONFORMITY CONNECTORS AND CONTACTS USED IN COMBINATION WITH THIS PRODUCT.
  2. REFER TO ETAD-E3011 FOR THE PROCEDURE OF THE CABLE ASSEMBLY.
  3. THE APPLICABLE CABLE OUTSIDE DIAMETER OF THIS PRODUCT IS 17.5 mm.

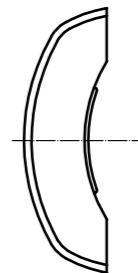
2	PPS	BLACK. UL94V-0	5	BRASS	NICKEL PLATING
1	PPS	BLACK. UL94V-0	4	BRASS	NICKEL PLATING
			3	NBR	BLACK
NO.	MATERIAL	FINISH . REMARKS	NO.	MATERIAL	FINISH . REMARKS
UNITS		SCALE	COUNT	DESCRIPTION OF REVISIONS	
mm		1 : 1	2	DIS-E-00005696	
HIROSE ELECTRIC CO., LTD.			APPROVED	RI. TAKAYASU	20130205
			CHECKED	NM. NISHIMATSU	20130205
			DESIGNED	TS. SAKAIZAWA	20130204
			DRAWN	TS. SAKAIZAWA	20130204
			DESIGNED	HY. MATSUDA	20210531
			CHECKED	KG. OKITA	20210531
			DATE	20210531	
			DRAWING NO.	EDC-127527-00-00	
			PART NO.	PQW-CM(17.5)	
			CODE NO.	CL0236-2019-6-00	

Oct.1.2024 Copyright 2024 HIROSE ELECTRIC CO., LTD. All Rights Reserved.  
In case of consideration for using Automotive equipment / device which demand high reliability, kindly contact our sales window correspondents.

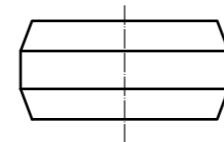
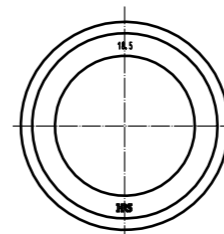
ASSEMBLY STATE OF REFERENCE No. 1 AND 4



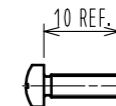
REFERECNE No. 2



REFERENCE No. 3



REFERENCE No. 5



<b>HRS</b>	DRAWING NO.	EDC-127527-00-00
	PART NO.	PQW-CM<17. 5>
	CODE NO.	CL0236-2019-6-00