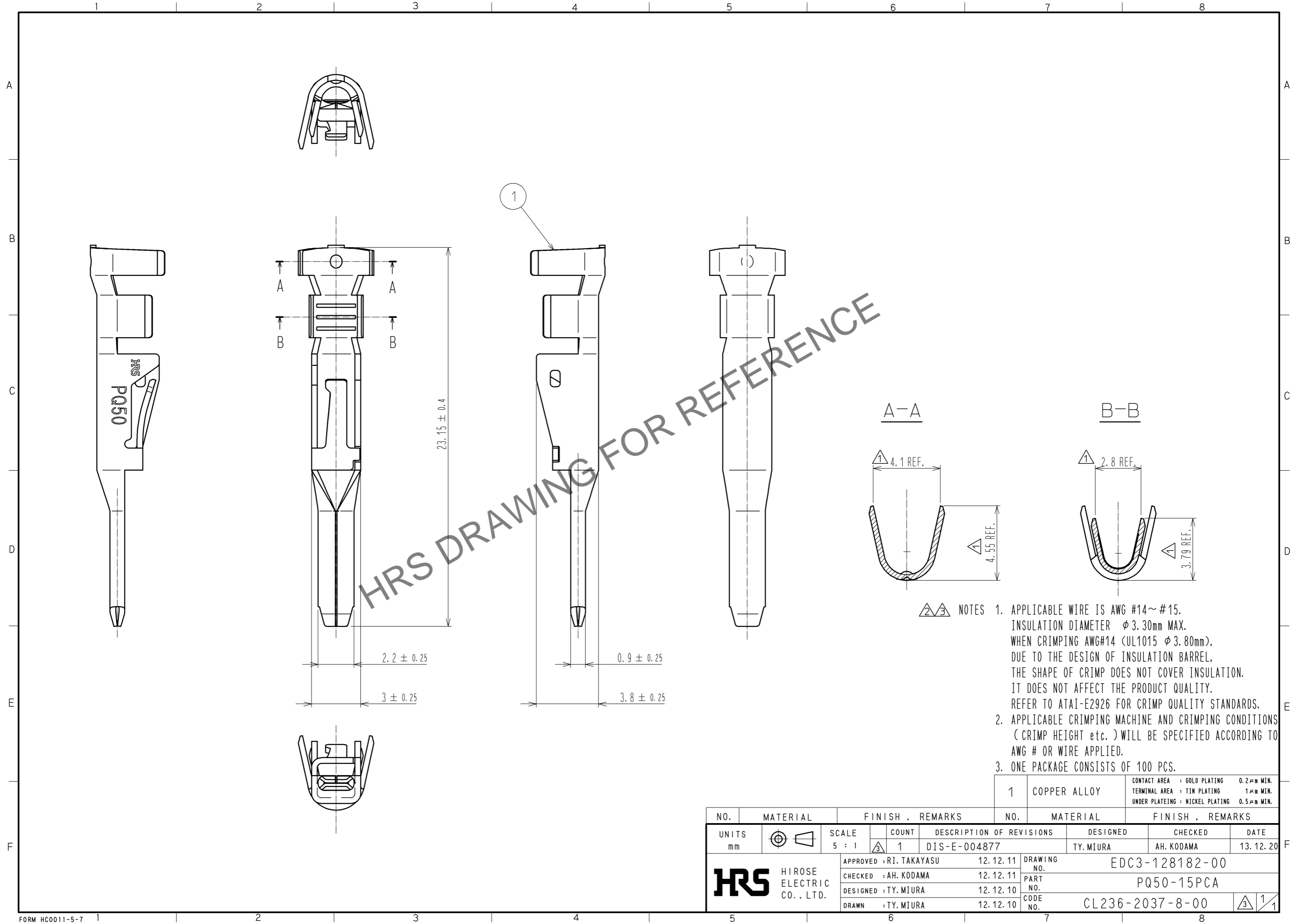


Oct.1.2024 Copyright 2024 HIROSE ELECTRIC CO., LTD. All Rights Reserved.
 In case of consideration for using Automotive equipment / device which demand high reliability, kindly contact our sales window correspondents.



HRS DRAWING FOR REFERENCE

- NOTES**
1. APPLICABLE WIRE IS AWG #14~#15. INSULATION DIAMETER ϕ 3.30mm MAX. WHEN CRIMPING AWG#14 (UL1015 ϕ 3.80mm). DUE TO THE DESIGN OF INSULATION BARREL, THE SHAPE OF CRIMP DOES NOT COVER INSULATION. IT DOES NOT AFFECT THE PRODUCT QUALITY. REFER TO ATAI-E2926 FOR CRIMP QUALITY STANDARDS.
 2. APPLICABLE CRIMPING MACHINE AND CRIMPING CONDITIONS (CRIMP HEIGHT etc.) WILL BE SPECIFIED ACCORDING TO AWG # OR WIRE APPLIED.
 3. ONE PACKAGE CONSISTS OF 100 PCS.

| | | |
|---|--------------|---|
| 1 | COPPER ALLOY | CONTACT AREA : GOLD PLATING 0.2 μ m MIN. TERMINAL AREA : TIN PLATING 1 μ m MIN. UNDER PLATING : NICKEL PLATING 0.5 μ m MIN. |
|---|--------------|---|

| NO. | MATERIAL | FINISH . REMARKS | NO. | MATERIAL | FINISH . REMARKS |
|--------------------------------------|----------|------------------|-------------------------|--------------------------|-------------------------------|
| UNITS mm | | SCALE 5 : 1 | COUNT 1 | DESCRIPTION OF REVISIONS | |
| | | | DESIGNED TY. MIURA | | CHECKED AH. KODAMA |
| | | | DATE 13.12.20 | | |
| HRS HIROSE ELECTRIC CO., LTD. | | | APPROVED : RI. TAKAYASU | 12.12.11 | DRAWING NO. EDC3-128182-00 |
| | | | CHECKED : AH. KODAMA | 12.12.11 | PART NO. PQ50-15PCA |
| | | | DESIGNED : TY. MIURA | 12.12.10 | CODE NO. CL236-2037-8-00 |
| | | | DRAWN : TY. MIURA | 12.12.10 | 1 |