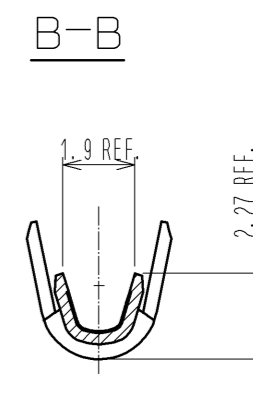
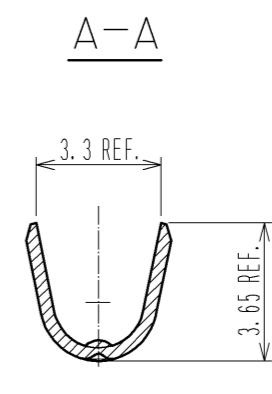
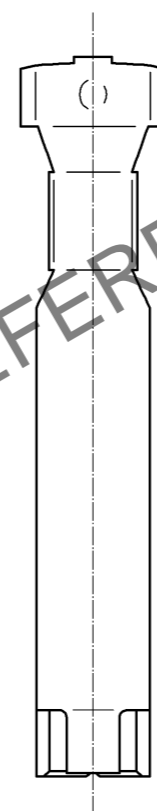
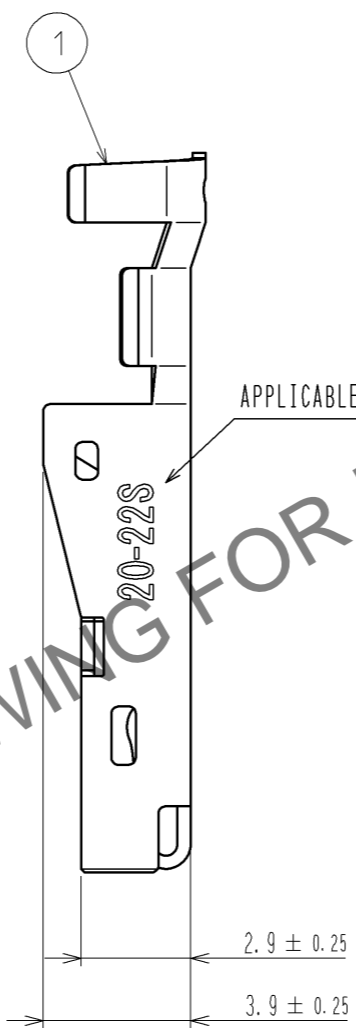
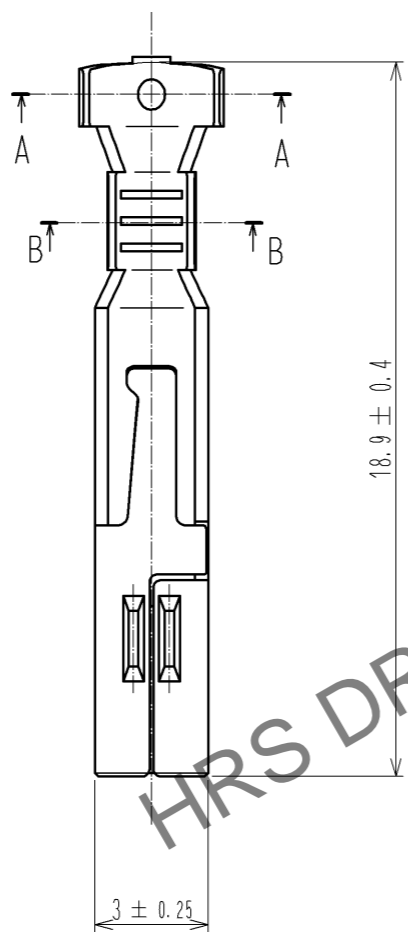
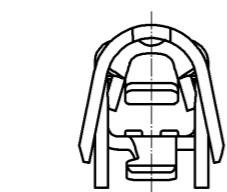
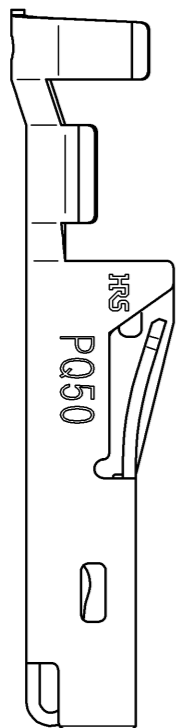


Apr.1.2026 Copyright 2026 HIROSE ELECTRIC CO., LTD. All Rights Reserved.
 In case of consideration for using Automotive equipment / device which demand high reliability, kindly contact our sales window correspondents.



- NOTES
1. APPLICABLE WIRE IS AWG #20~#22. (UL1007, UL1015)
INSULATION DIAMETER ϕ 2.70mm MAX.
 2. APPLICABLE CRIMPING MACHINE AND CRIMPING CONDITIONS (CRIMP HEIGHT etc.) WILL BE SPECIFIED ACCORDING TO AWG # OR WIRE APPLIED.
 3. ONE PACKAGE CONSISTS OF 100 PCS.
 4. REFER TO ATAI-E3038 FOR CRIMP QUALITY STANDARDS.

NO.	MATERIAL	FINISH . REMARKS	NO.	MATERIAL	FINISH . REMARKS	
1	COPPER ALLOY					
			CONTACT AREA : GOLD PLATING 0.2 μ m MIN. TERMINAL AREA : TIN PLATING 1 μ m MIN. UNDER PLATING : NICKEL PLATING 0.5 μ m MIN.			
UNITS	SCALE	COUNT	DESCRIPTION OF REVISIONS	DESIGNED	CHECKED	DATE
mm	5 : 1	1	DIS-E-004910	TY. MIURA	NM. NISHIMATSU	14. 01. 20
APPROVED : RI. TAKAYASU 12. 12. 11			DRAWING NO. EDC3-128192-00			
CHECKED : AH. KODAMA 12. 12. 11			PART NO. PQ50-2022SCA			
DESIGNED : TY. MIURA 12. 12. 10			CODE NO. CL236-2045-6-00			
DRAWN : TY. MIURA 12. 12. 10						