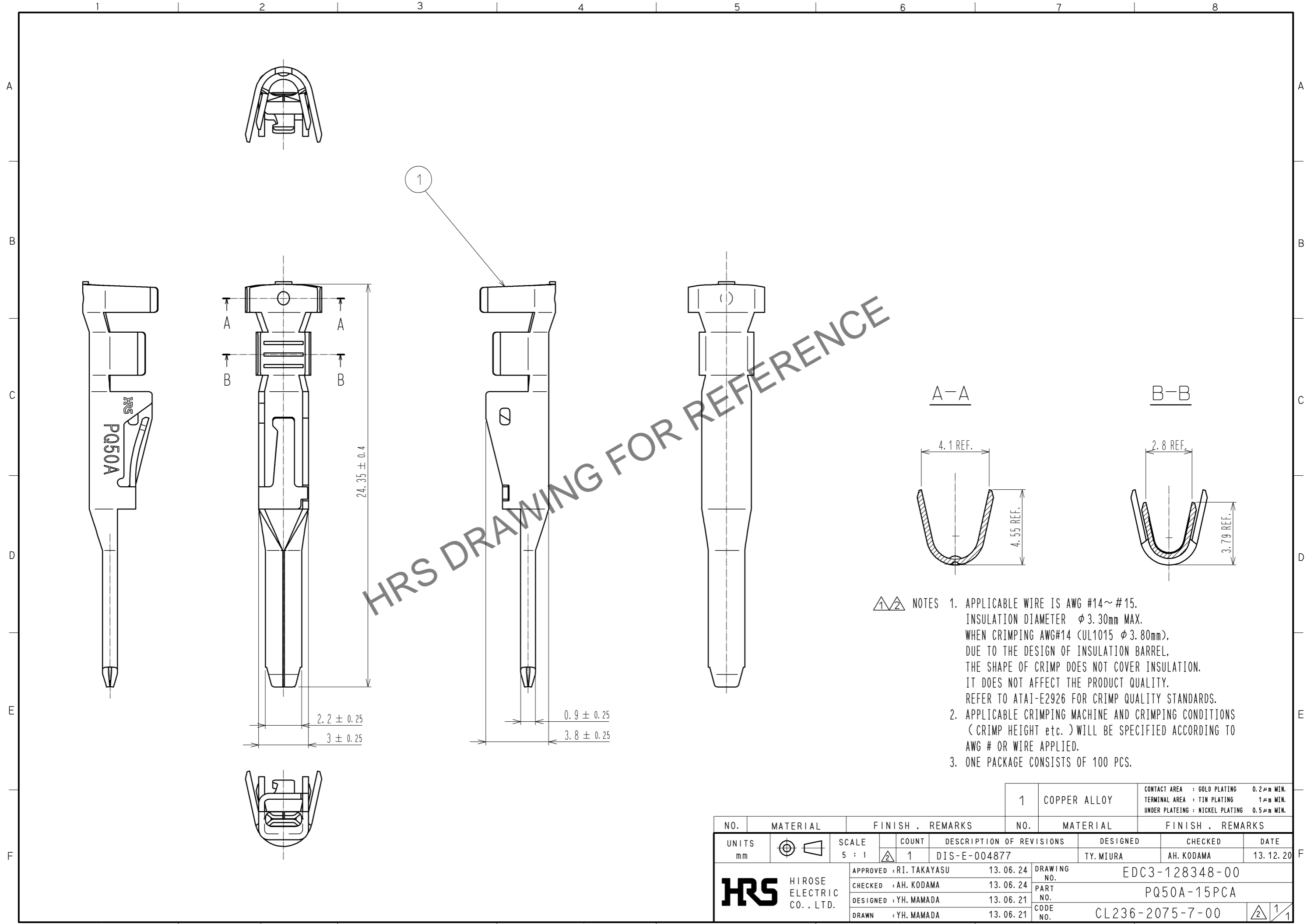


May.1.2026 Copyright 2026 HIROSE ELECTRIC CO., LTD. All Rights Reserved.  
 In case of consideration for using Automotive equipment / device which demand high reliability, kindly contact our sales window correspondents.



HRS DRAWING FOR REFERENCE

- NOTES**
- APPLICABLE WIRE IS AWG #14~#15.  
 INSULATION DIAMETER  $\phi 3.30$ mm MAX.  
 WHEN CRIMPING AWG#14 (UL1015  $\phi 3.80$ mm),  
 DUE TO THE DESIGN OF INSULATION BARREL,  
 THE SHAPE OF CRIMP DOES NOT COVER INSULATION.  
 IT DOES NOT AFFECT THE PRODUCT QUALITY.  
 REFER TO ATAI-E2926 FOR CRIMP QUALITY STANDARDS.
  - APPLICABLE CRIMPING MACHINE AND CRIMPING CONDITIONS  
 (CRIMP HEIGHT etc.) WILL BE SPECIFIED ACCORDING TO  
 AWG # OR WIRE APPLIED.
  - ONE PACKAGE CONSISTS OF 100 PCS.

|                                      |  |                         |            |  |                       |                       |                  |
|--------------------------------------|--|-------------------------|------------|--|-----------------------|-----------------------|------------------|
| NO. 1                                |  | MATERIAL COPPER ALLOY   |            | FINISH . REMARKS CONTACT AREA : GOLD PLATING 0.2μm MIN.<br>TERMINAL AREA : TIN PLATING 1μm MIN.<br>UNDER PLATING : NICKEL PLATING 0.5μm MIN. |                       |                       |                  |
| UNITS<br>mm                          |  | SCALE<br>5 : 1          | COUNT<br>1 | DESCRIPTION OF REVISIONS<br>DIS-E-004877   | DESIGNED<br>TY. MIURA | CHECKED<br>AH. KODAMA | DATE<br>13.12.20 |
| <b>HRS</b> HIROSE ELECTRIC CO., LTD. |  | APPROVED : RI. TAKAYASU | 13.06.24   | DRAWING NO. EDC3-128348-00   |                       |                       |                  |
|                                      |  | CHECKED : AH. KODAMA    | 13.06.24   | PART NO. PQ50A-15PCA   |                       |                       |                  |
|                                      |  | DESIGNED : YH. MAMADA   | 13.06.21   | CODE NO. CL236-2075-7-00   |                       |                       |                  |
|                                      |  | DRAWN : YH. MAMADA      | 13.06.21   |  |                       | 1/1                   |                  |