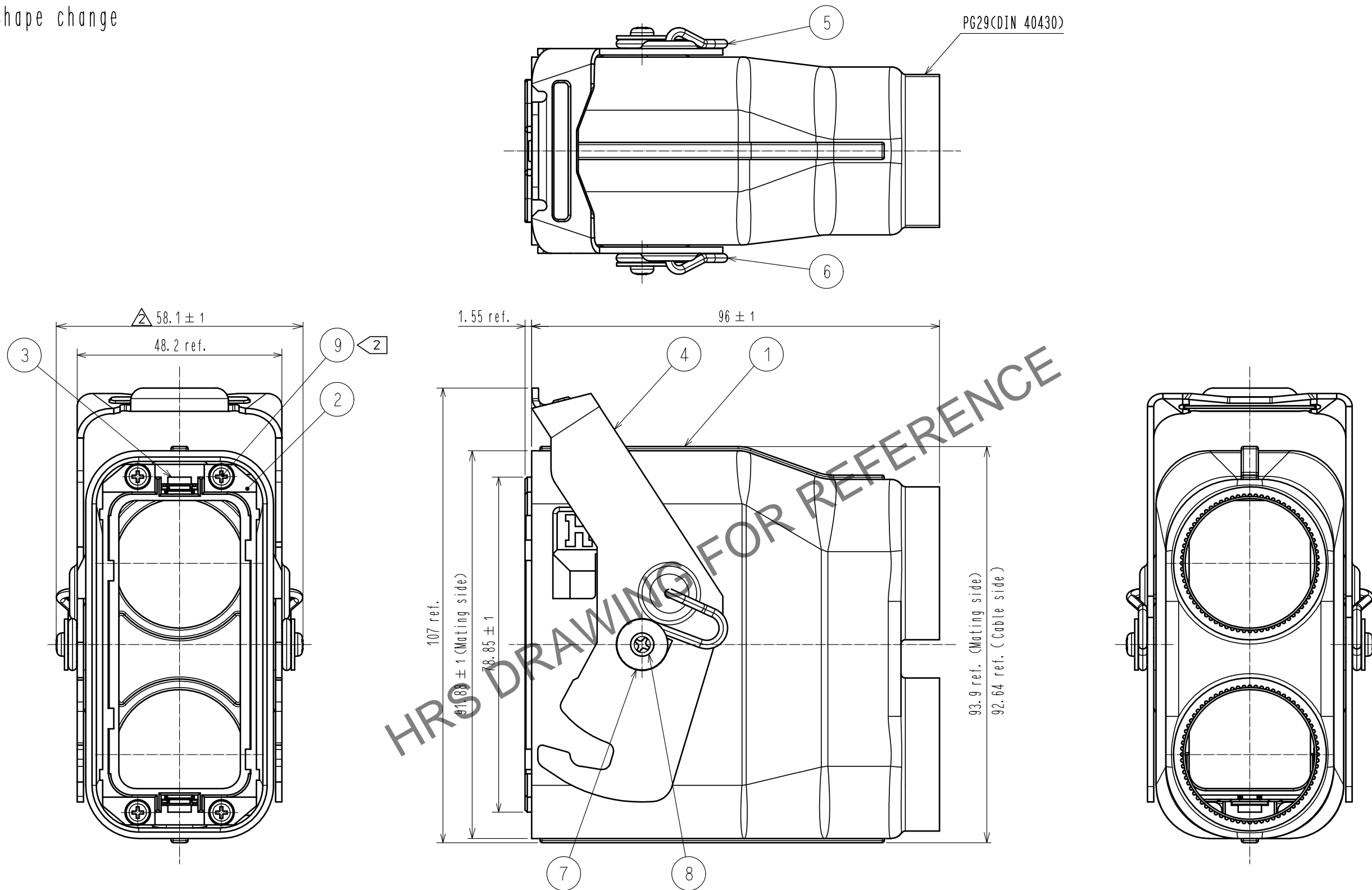


Jun.1.2024 Copyright 2024 HIROSE ELECTRIC CO., LTD. All Rights Reserved.  
In case of consideration for using Automotive equipment / device which demand high reliability, kindly contact our sales window correspondents.

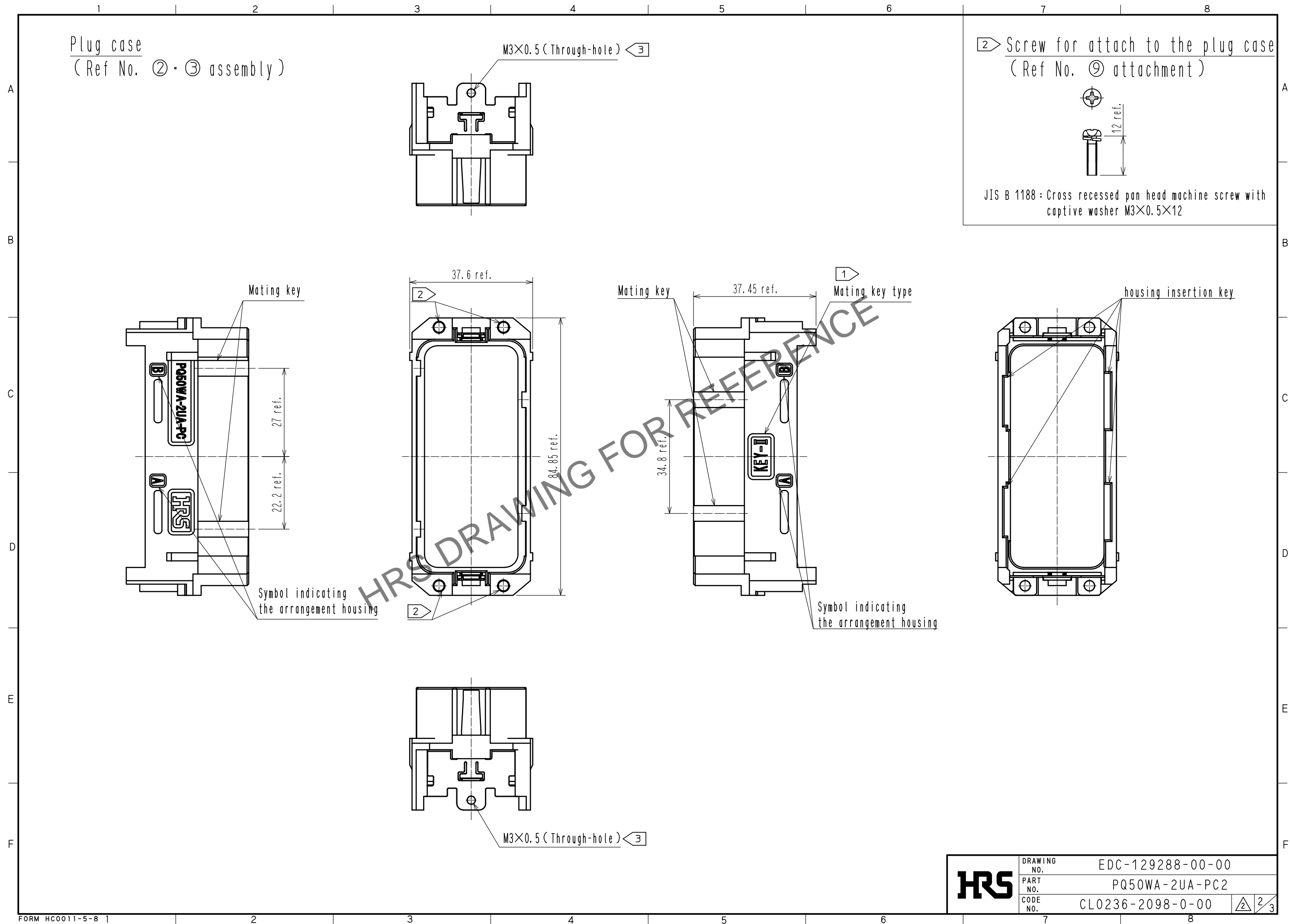
△ Shape change



- Note
- 1 Mating key type is 'II'.
  - 2 The screw which attaches plug case(ref No. ②, ③assembly) and cover case(ref No. ①・④・⑤・⑥・⑦・⑧assembly) is appended products. (recommended tightening torque : 0.32~0.63 N・m)
  - 3 Use recommended screw(commercial item) to attach the crimp terminal to this product. (recommended screw JIS B 1188 cross recessed pan head machine screw with captive washer M3×0.5×4 (recommended tightening torque : 0.32~0.63 N・m)
  4. Refer to ETAD-E3149 for the conformity connectors with this product.
  5. Refer to ETAD-E3151 for the procedure of the cable assembly.
  6. This is a die casting product. molten metal flow patterns and small roughness may appear on the surface. However there is no problem in the product functions.
  7. Sales unit: 20 pcs/box.

4	Stainless steel		9	Steel	Nickel plating
3	Stainless steel	Nickel plating	8	Steel	Nickel plating
2	Aluminum alloy		7	Steel	Nickel plating
1	Aluminum alloy		6	Stainless steel	
			5	Stainless steel	
NO.	MATERIAL	FINISH . REMARKS	NO.	MATERIAL	FINISH . REMARKS
UNITS mm		SCALE 1 : 1	COUNT △ 5	DESCRIPTION OF REVISIONS DIS-E-00004819	DESIGNED HY. MATSUDA
HIROSE ELECTRIC CO., LTD.		APPROVED : MN. KENJO	20200214	DRAWING NO.	EDC-129288-00-00
		CHECKED : TU. TANIGUCHI	20200214	PART NO.	PQ50WA-2UA-PC2
		DESIGNED : HY. MATSUDA	20200214	CODE NO.	CL0236-2098-0-00
		DRAWN : HY. MATSUDA	20200214		
					DATE 20210326
					CHECKED TU. TANIGUCHI

Jun.1.2024 Copyright 2024 HIROSE ELECTRIC CO., LTD. All Rights Reserved.  
In case of consideration for using Automotive equipment / device which demand high reliability, kindly contact our sales window correspondents.

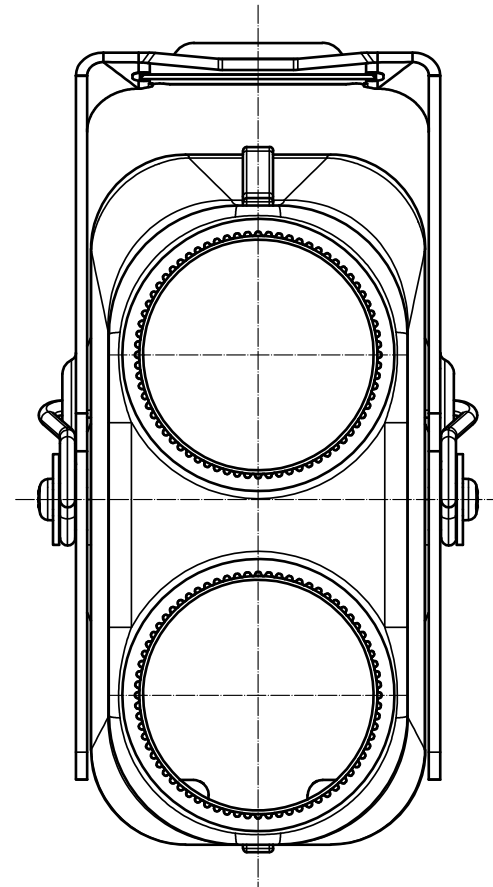
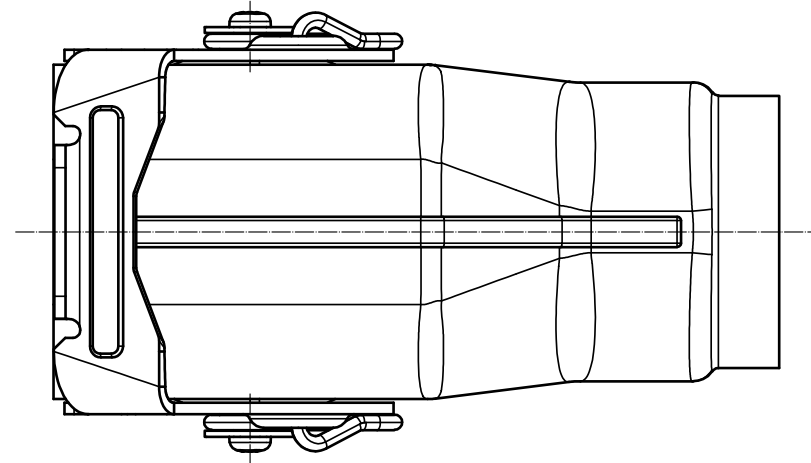
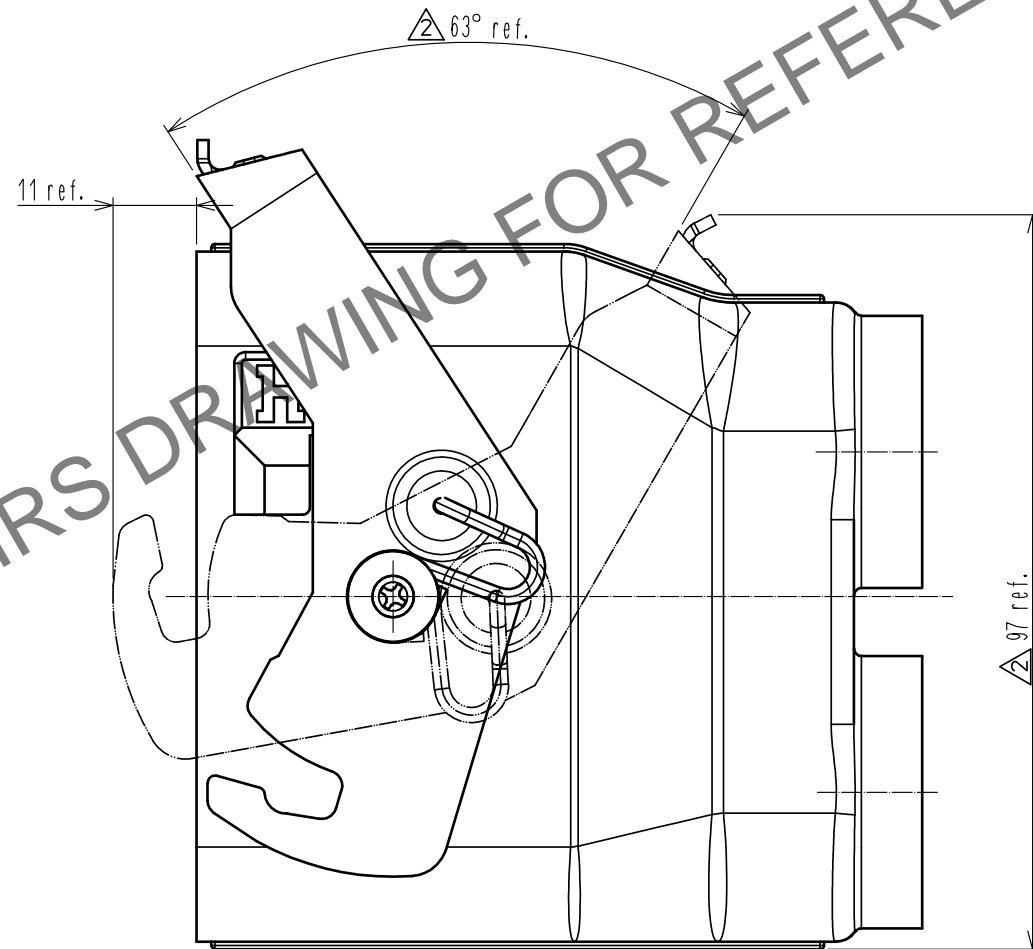
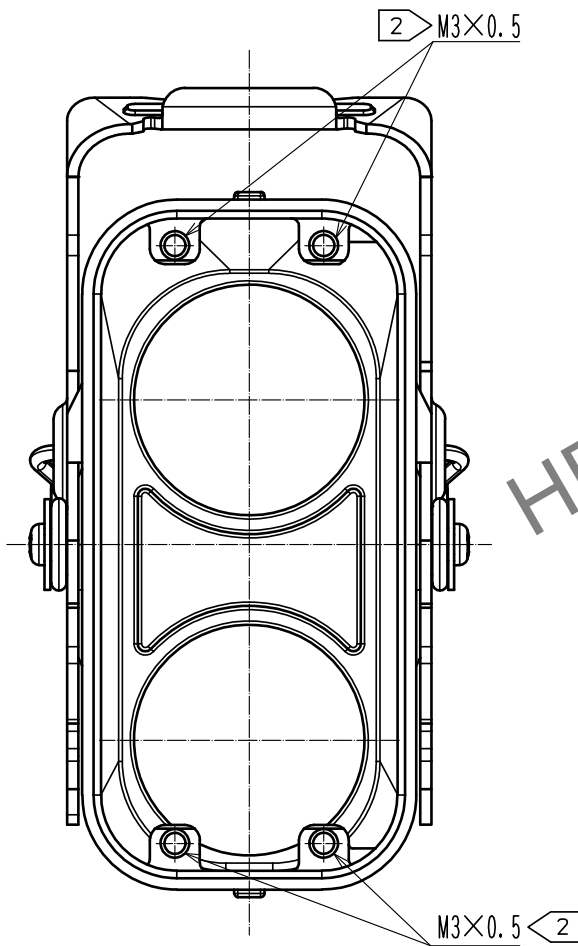


Jun.1.2024 Copyright 2024 HIROSE ELECTRIC CO., LTD. All Rights Reserved.  
In case of consideration for using Automotive equipment / device which demand high reliability, kindly contact our sales window correspondents.

△ Shape change

Cover case

(Ref No. ①・④・⑤・⑥・⑦・⑧ assembly)



DRAWING NO.	EDC-129288-00-00
PART NO.	PQ50WA-2UA-PC2
CODE NO.	CL0236-2098-0-00

△ 3/3