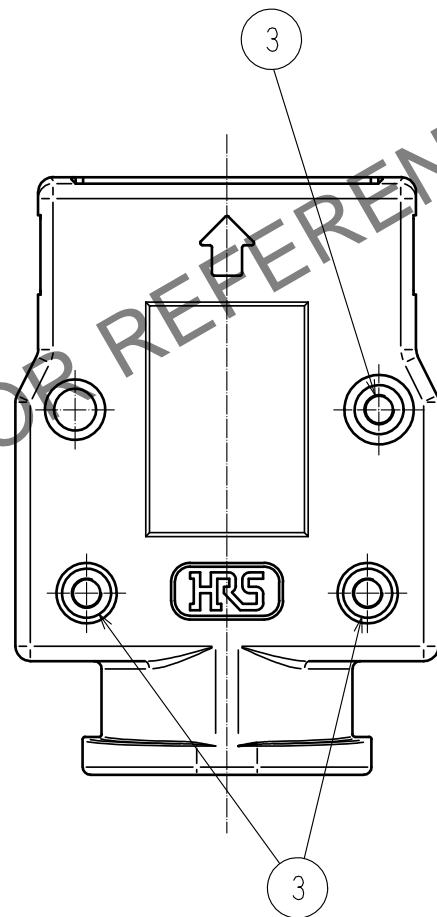
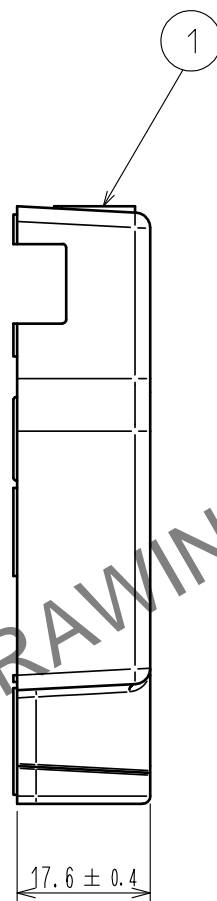
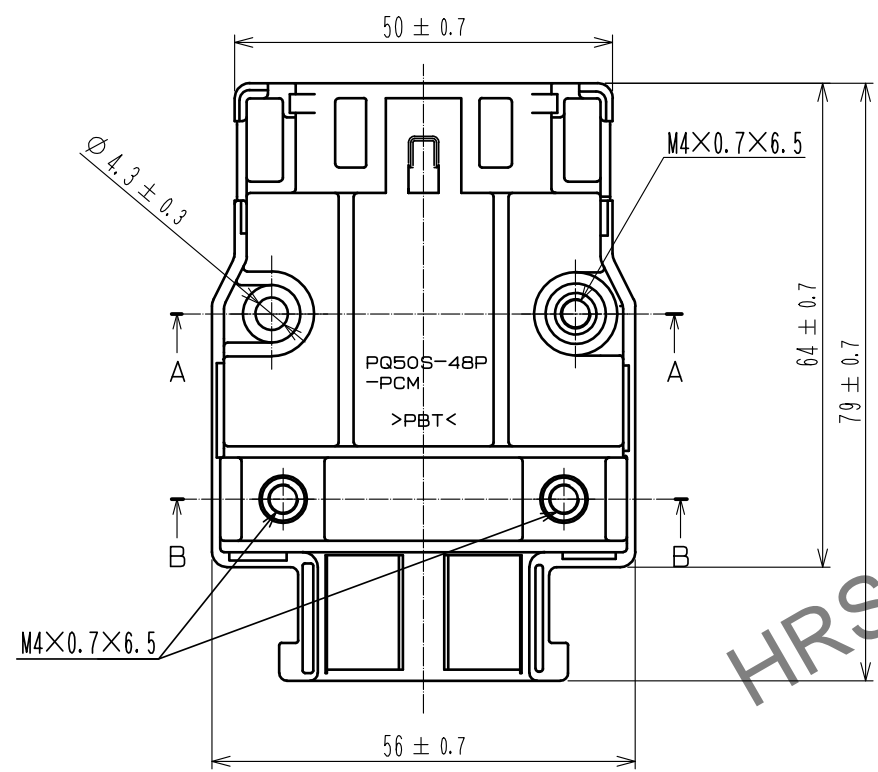
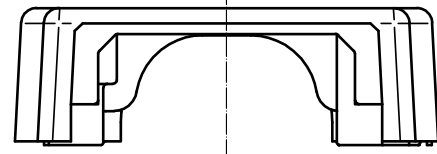
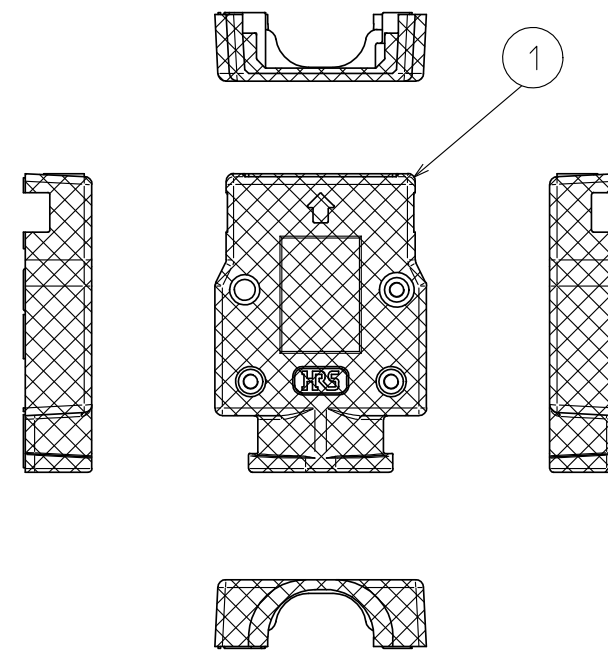


Oct.1.2024 Copyright 2024 HIROSE ELECTRIC CO., LTD. All Rights Reserved.
In case of consideration for using Automotive equipment / device which demand high reliability, kindly contact our sales window correspondents.

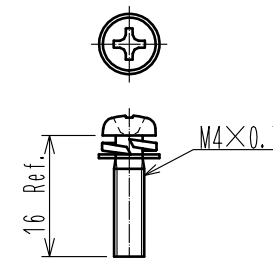


2 Plating area (1:2)



4 Attachment

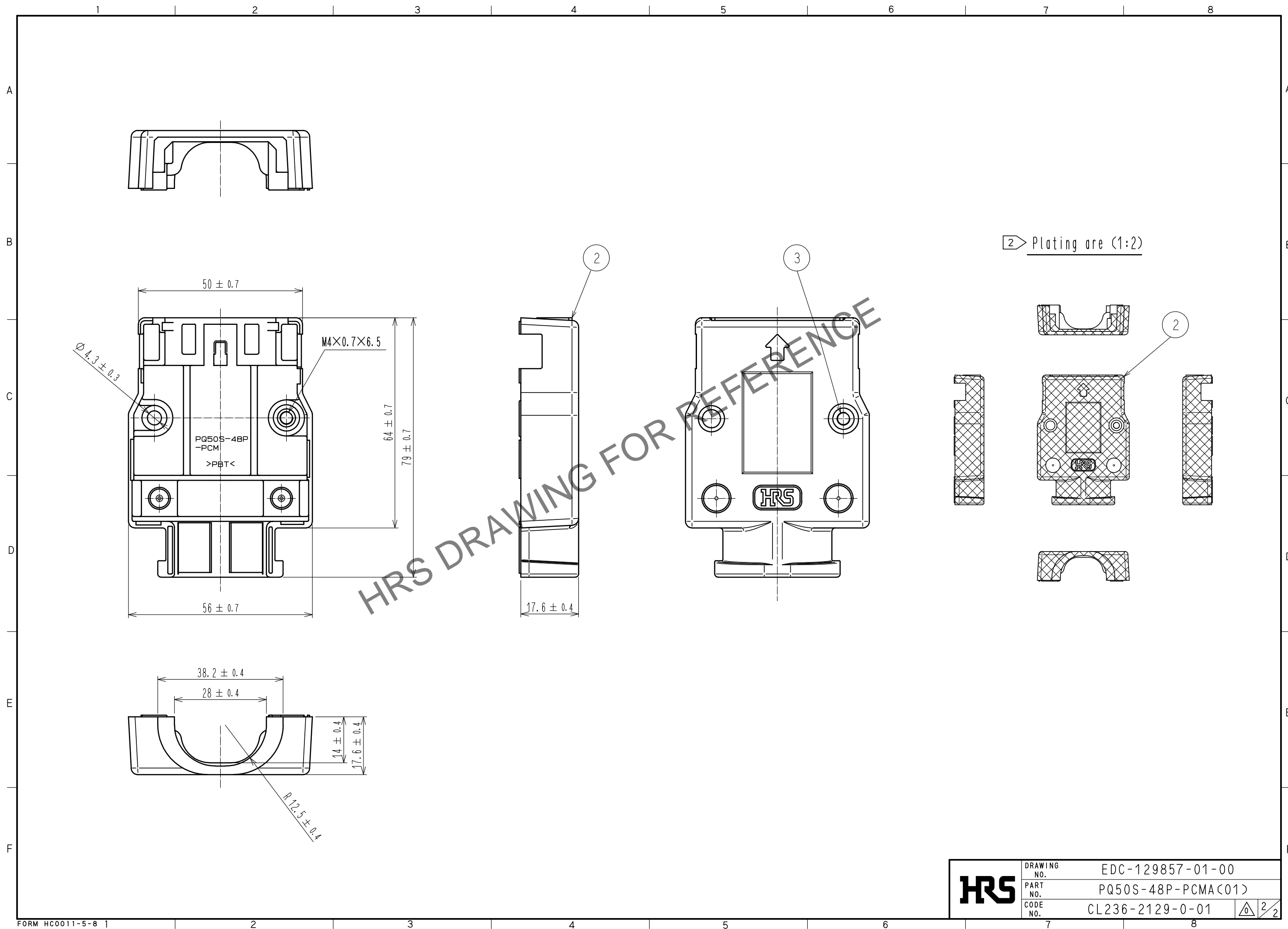
JIS B 1188 : Cross recessed need screws with captive washer
M4×0.7×16



Notes 1. Refer to ETAD-E2961 for the Applicable components assembled with this product.
2 While discoloration and or un-plating may occur beyond the hatched areas, product performance remain unchanged.

2	PBT	Surface plating : Nickel Under plating : Copper	4	Steel	Surface plating : Nickel Under plating : Copper
1	PBT	Surface plating : Nickel Under plating : Copper	3	Brass	Nickel plating
NO.	MATERIAL	FINISH . REMARKS	NO.	MATERIAL	FINISH . REMARKS
UNITS mm		SCALE 1 : 1	COUNT 	DESCRIPTION OF REVISIONS	
		APPROVED : MN. KENJO	20190228	DRAWING NO.	EDC-129857-01-00
HIROSE ELECTRIC CO., LTD.		CHECKED : TU. TANIGUCHI	20190228	PART NO.	PQ50S-48P-PCMA(C01)
		DESIGNED : SH. KOYAMA	20190228	CODE NO.	CL236-2129-0-01
		DRAWN : SH. KOYAMA	20190228		1/2

Oct.1.2024 Copyright 2024 HIROSE ELECTRIC CO., LTD. All Rights Reserved.
In case of consideration for using Automotive equipment / device which demand high reliability, kindly contact our sales window correspondents.



HRS	DRAWING NO.	EDC-129857-01-00
	PART NO.	PQ50S-48P-PCMA(01)
	CODE NO.	CL236-2129-0-01

2/2