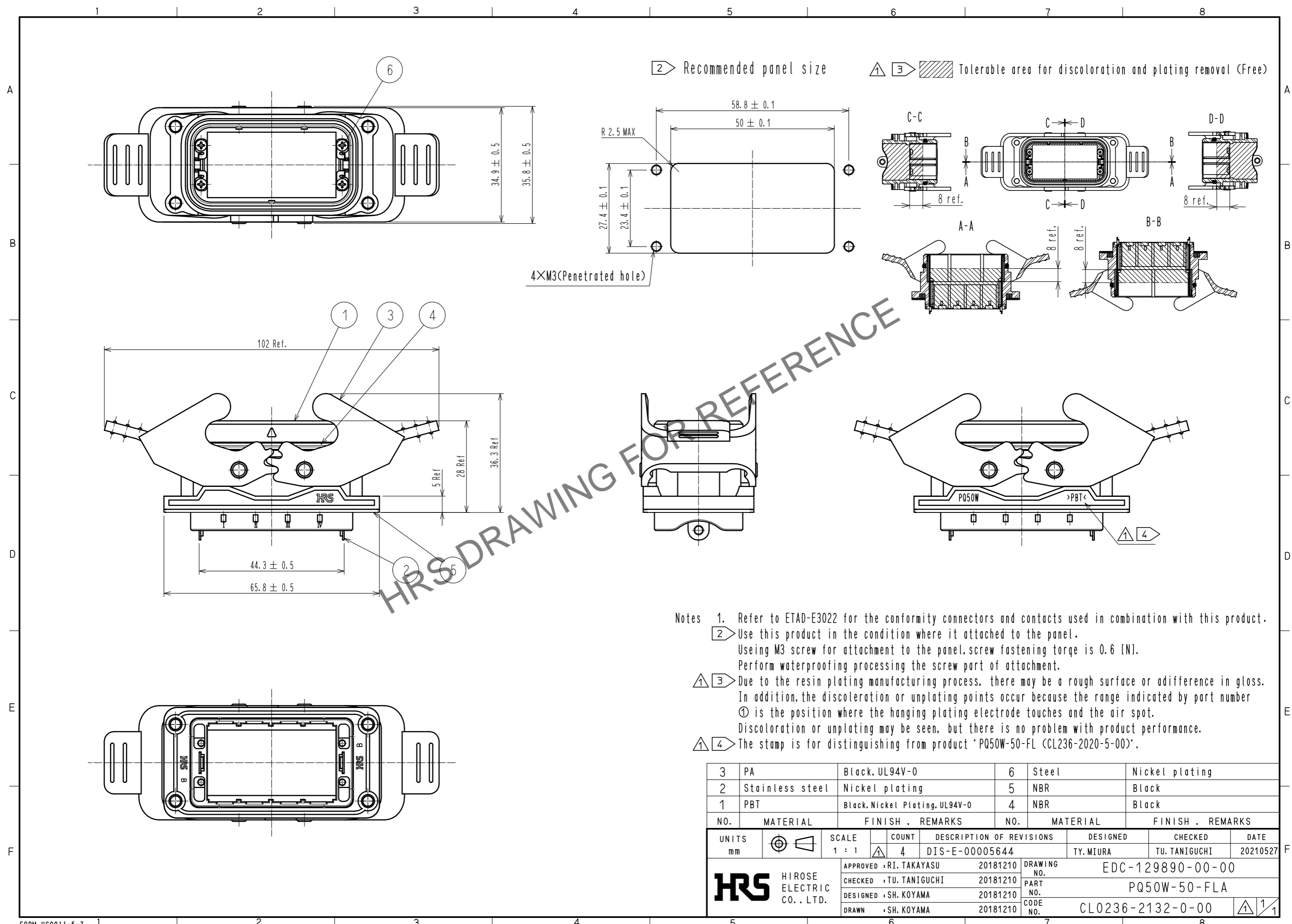


Oct.1.2024 Copyright 2024 HIROSE ELECTRIC CO., LTD. All Rights Reserved.  
In case of consideration for using Automotive equipment / device which demand high reliability, kindly contact our sales window correspondents.



2 Recommended panel size  
 3 Tolerable area for discoloration and plating removal (Free)

- Notes
1. Refer to ETAD-E3022 for the conformity connectors and contacts used in combination with this product.
  - 2 Use this product in the condition where it attached to the panel.  
 Using M3 screw for attachment to the panel, screw fastening torque is 0.6 [N].  
 Perform waterproofing processing the screw part of attachment.
  - 3 Due to the resin plating manufacturing process, there may be a rough surface or adifference in gloss.  
 In addition, the discoloration or unplating points occur because the range indicated by part number  
 ① is the position where the hanging plating electrode touches and the air spot.  
 Discoloration or unplating may be seen, but there is no problem with product performance.
  - 4 The stamp is for distinguishing from product 'PQ50W-50-FL (CL236-2020-5-00)'

3	PA	Black, UL94V-0	6	Steel	Nickel plating
2	Stainless steel	Nickel plating	5	NBR	Black
1	PBT	Black, Nickel Plating, UL94V-0	4	NBR	Black
NO.	MATERIAL	FINISH . REMARKS	NO.	MATERIAL	FINISH . REMARKS
UNITS	mm	SCALE	1 : 1	COUNT	4
DESCRIPTION OF REVISIONS			DESIGNED	CHECKED	DATE
DIS-E-00005644			TY. MIURA	TU. TANIGUCHI	20210527
APPROVED : RI. TAKAYASU		20181210	DRAWING NO. EDC-129890-00-00		
CHECKED : TU. TANIGUCHI		20181210	PART NO. PQ50W-50-FLA		
DESIGNED : SH. KOYAMA		20181210	CODE NO. CL0236-2132-0-00		
DRAWN : SH. KOYAMA		20181210			