

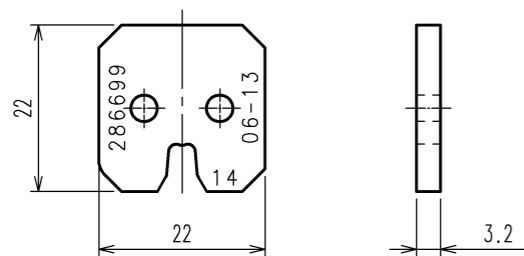
Dec.1.2024 Copyright 2024 HIROSE ELECTRIC CO., LTD. All Rights Reserved.  
 In case of consideration for using Automotive equipment / device which demand high reliability, kindly contact our sales window correspondents.

1 2 3 4 5 6 7 8

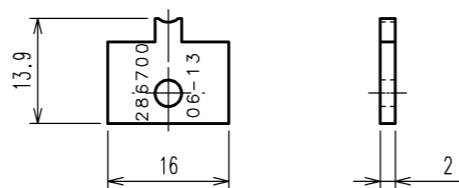
A  
B  
C  
D  
E  
F

A  
B  
C  
D  
E  
F

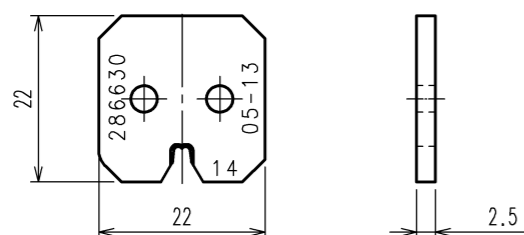
INSULATION CRIMPER



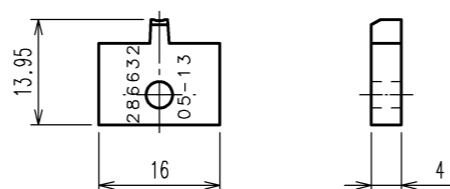
INSULATION ANVIL



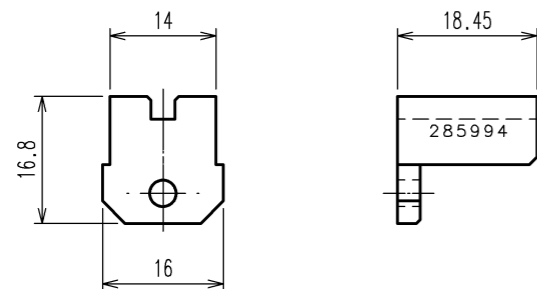
WIRE CRIMPER



WIRE ANVIL



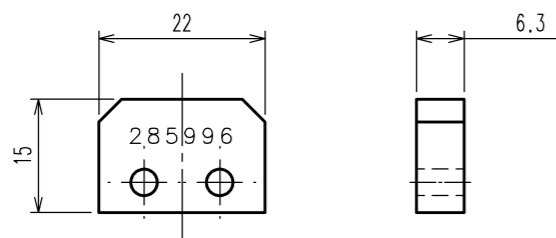
CONTACT HOLDER A



CONTACT HOLDER B



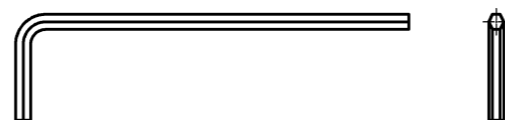
CRIMPER SPACER



SCREW(M2×5) : TWO



HEXAGON WRENCH(M2)



COUNT	DESCRIPTION OF REVISIONS	BY	CHKD	DATE	COUNT	DESCRIPTION OF REVISIONS	BY	CHKD	DATE
△				..	△				..
△				..	△				..
△				..	△				..

Notes 1.This drawing shows PQ50-14(1015) (CL0250-1019-7).

2.The following table shows the specification of this unit.

INSULATION CRIMPER	ONE
WIRE CRIMPER	ONE
INSULATION ANVIL	ONE
WIRE ANVIL	ONE
CONTACT HOLDER A	ONE
CONTACT HOLDER B	ONE
CRIMPER SPACER	ONE
SCREW(M2×5)	TWO
HEXAGON WRENCH(M2)	ONE

TO  
PE

2			4		
1			3		
NO.	MATERIAL	FINISH, REMARKS	NO.	MATERIAL	FINISH, REMARKS
CODE NO.(OLD) CL		DRAWN H.KUDO 13.10.10	DESIGNED M.TAKAHASHI 13.10.10	CHECKED S.OIZUMI 13.10.11	APPROVED T.ITO 13.10.11
DRAWING NO. EDC3-276374		PART NO. PQ50-14(1015)			
SCALE 1 : 1		CODE NO. CL250-1019-7		1 / 1	
UNITS mm		HRS HIROSE ELECTRIC CO., LTD			

1 2 3 4 5 6 7 8