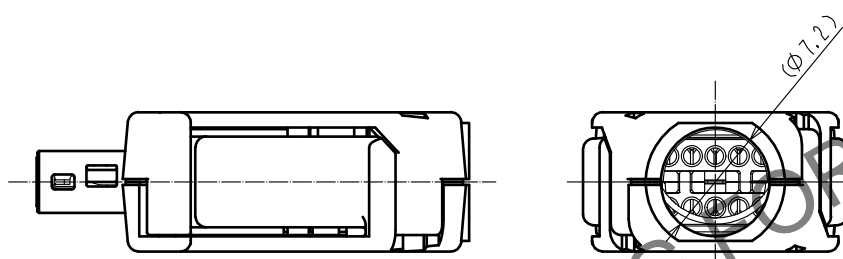
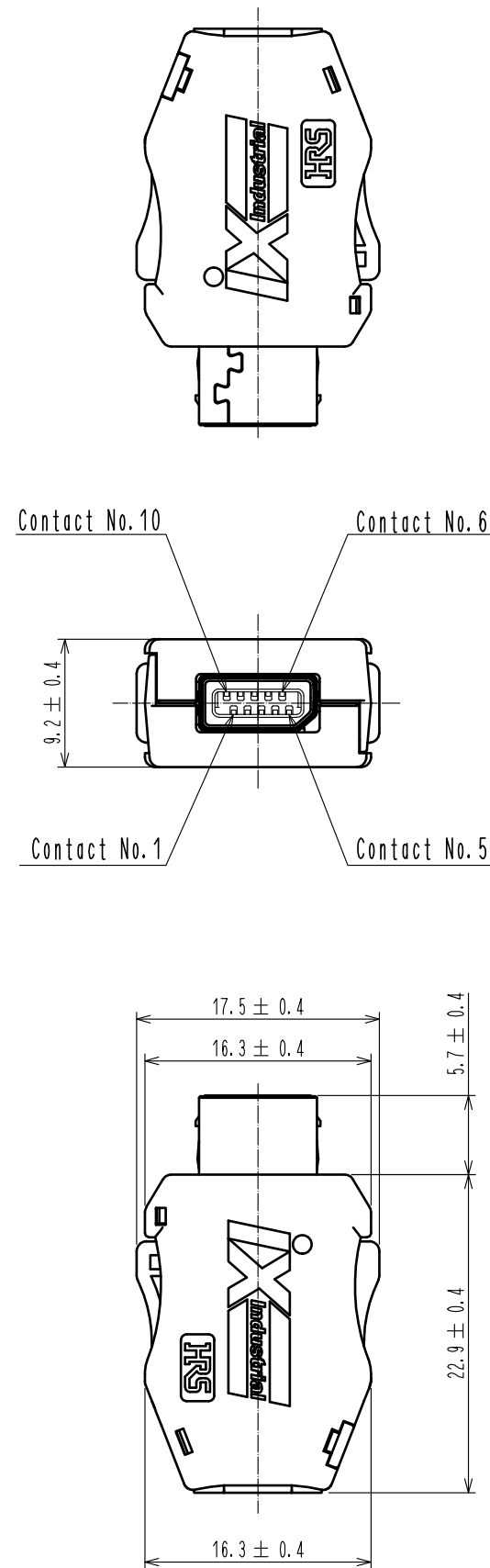


Apr.1.2024 Copyright 2024 HIROSE ELECTRIC CO., LTD. All Rights Reserved.
In case of consideration for using Automotive equipment / device which demand high reliability, kindly contact our sales window correspondents.

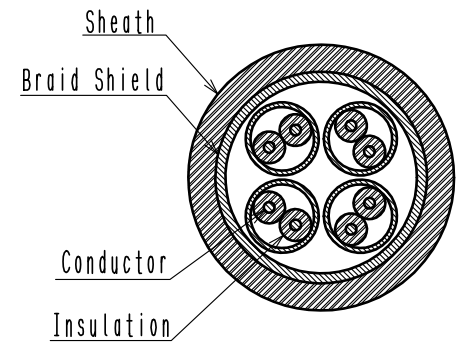
A
B
C
D
E
F



Notes. 1. Recommended cable condition is shown below.
⚠ A list of compatible cables is available on the Hirose website.
When using a non-recommended cable, please contact a Hirose sales representative.
Refer to the technical specification (ETAD-E3162) for wiring and assembly procedures.

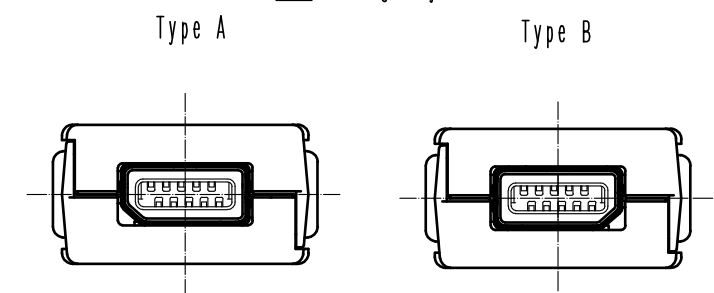
⚠ Recommended Cable

Items		Recommended Condition
Conductor	Size	AWG#28 to 26
	Composition	7 stranded
	Material	Annealed copper wire
Insulation O.D.		φ0.95 to 1.05mm
Braid Shield		Tin plating
Sheath O.D.		φ6.3 to 7.2mm



2. This product (Type B) is used for non Ethernet applications like signaling, serial or other industrial bus communication systems.
Please use Type A for 10/100 Mbit/s and 1/10 Gbit/s Ethernet communication.

⚠ Mating Key

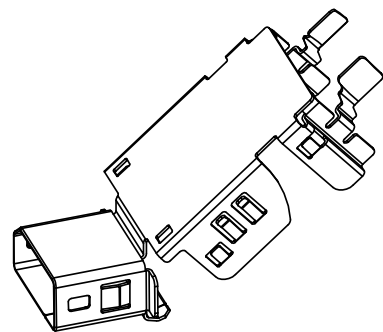


⚠ 3 Excluding the plug unit, this product is packaged separately by the type of parts.
The shield shell is packaged prior to bending. (See next page.)

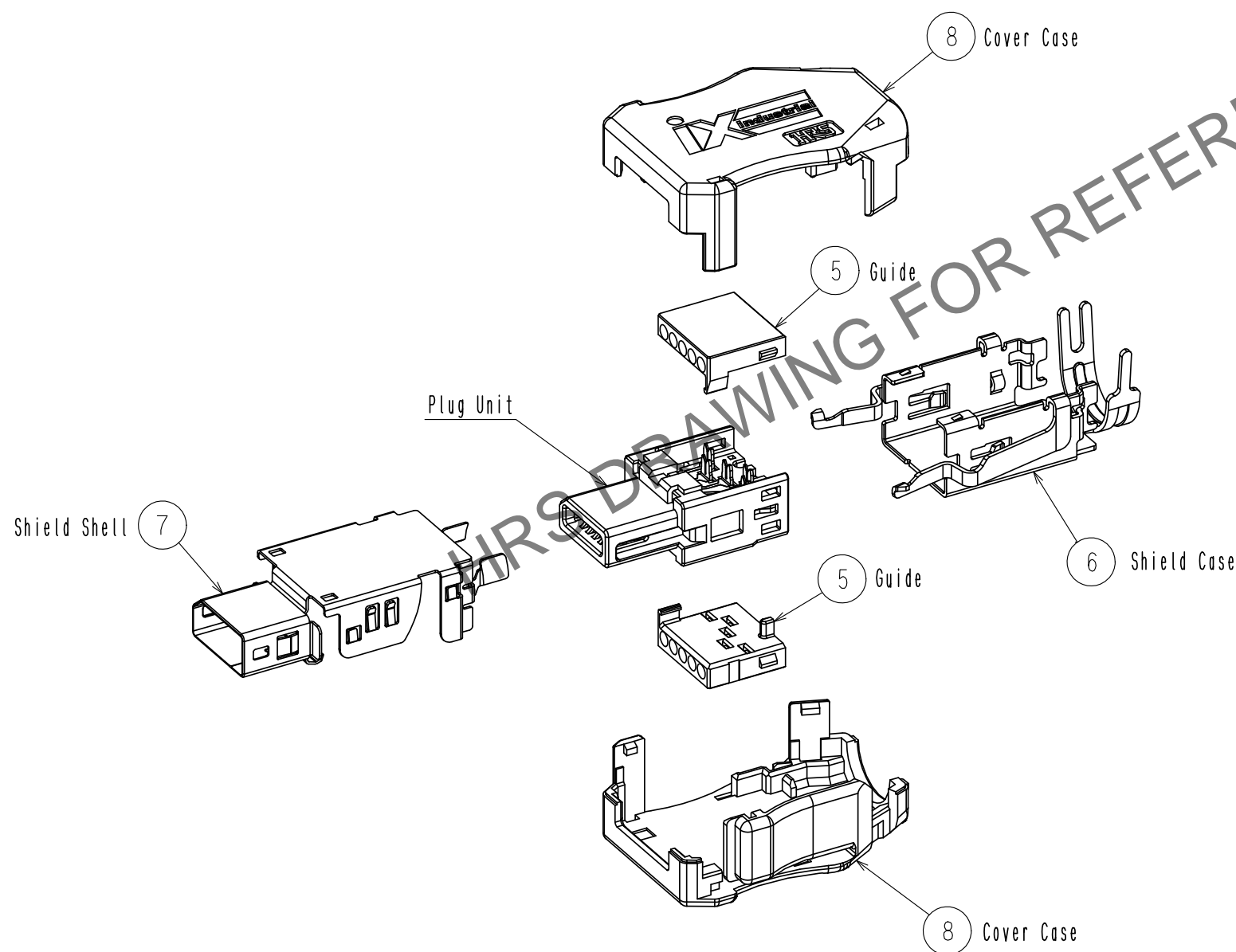
4	PA	Black, UL94V-0	8	PC	Dark gray, UL94V-0
3	Stainless Steel		7	Stainless Steel	Nickel 0.2 μm min
2	PA	Black, UL94V-0	6	Stainless Steel	Nickel 1 μm min
1	Copper Alloy	Contact area : Gold 0.2 μm min Wiring area : Gold 0.03 μm min Under plating : Nickel 2 μm min	5	PC	Clear, UL94V-0
NO.	MATERIAL	FINISH . REMARKS	NO.	MATERIAL	FINISH . REMARKS
UNITS mm		SCALE 2 : 1	COUNT 6		DESCRIPTION OF REVISIONS DIS-E-00006876
HRS		APPROVED : RI. TAKAYASU	20170324		DESIGNED MT. YASUDA
HIROSE ELECTRIC CO., LTD.		CHECKED : KI. NAGANUMA	20170324		CHECKED KI. KAGOTANI
		DESIGNED : HT. SATO	20170324		DATE 20210922
		DRAWN : HT. SATO	20170324		
		DRAWING NO. EDC-129487-00-00		PART NO. IX30G-B-10S-CV(7.0)	
		CODE NO. CL0251-0025-0-00		1/2	

Apr.1.2024 Copyright 2024 HIROSE ELECTRIC CO., LTD. All Rights Reserved.
In case of consideration for using Automotive equipment / device which demand high reliability, kindly contact our sales window correspondents.

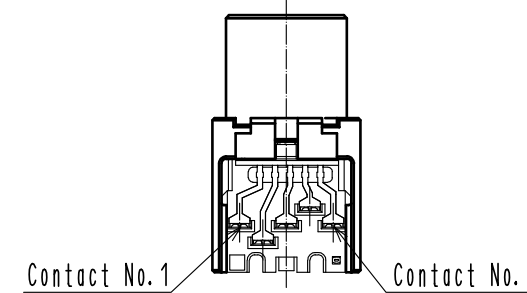
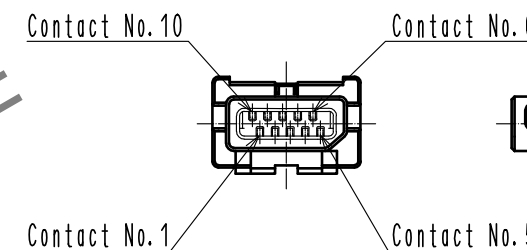
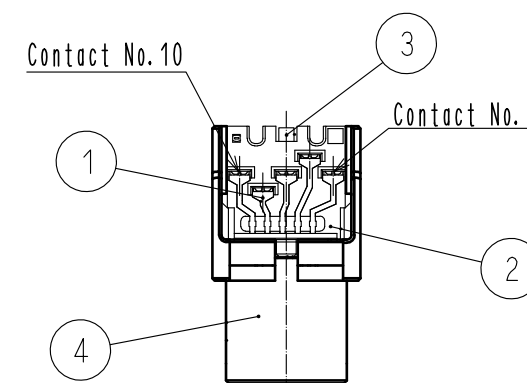
3 Shield Shell Delivery Form



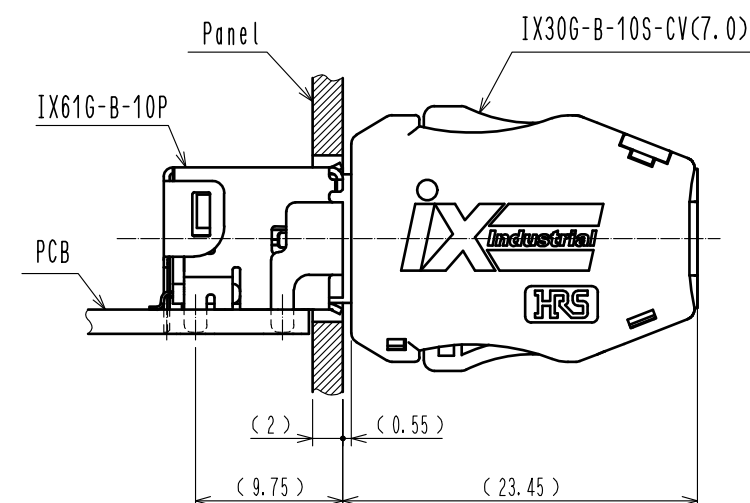
3 Product Structure



Plug Unit



5 Mated Condition



HRS

DRAWING NO.	EDC-129487-00-00
PART NO.	IX30G-B-10S-CV(7.0)
CODE NO.	CL0251-0025-0-00

2/2