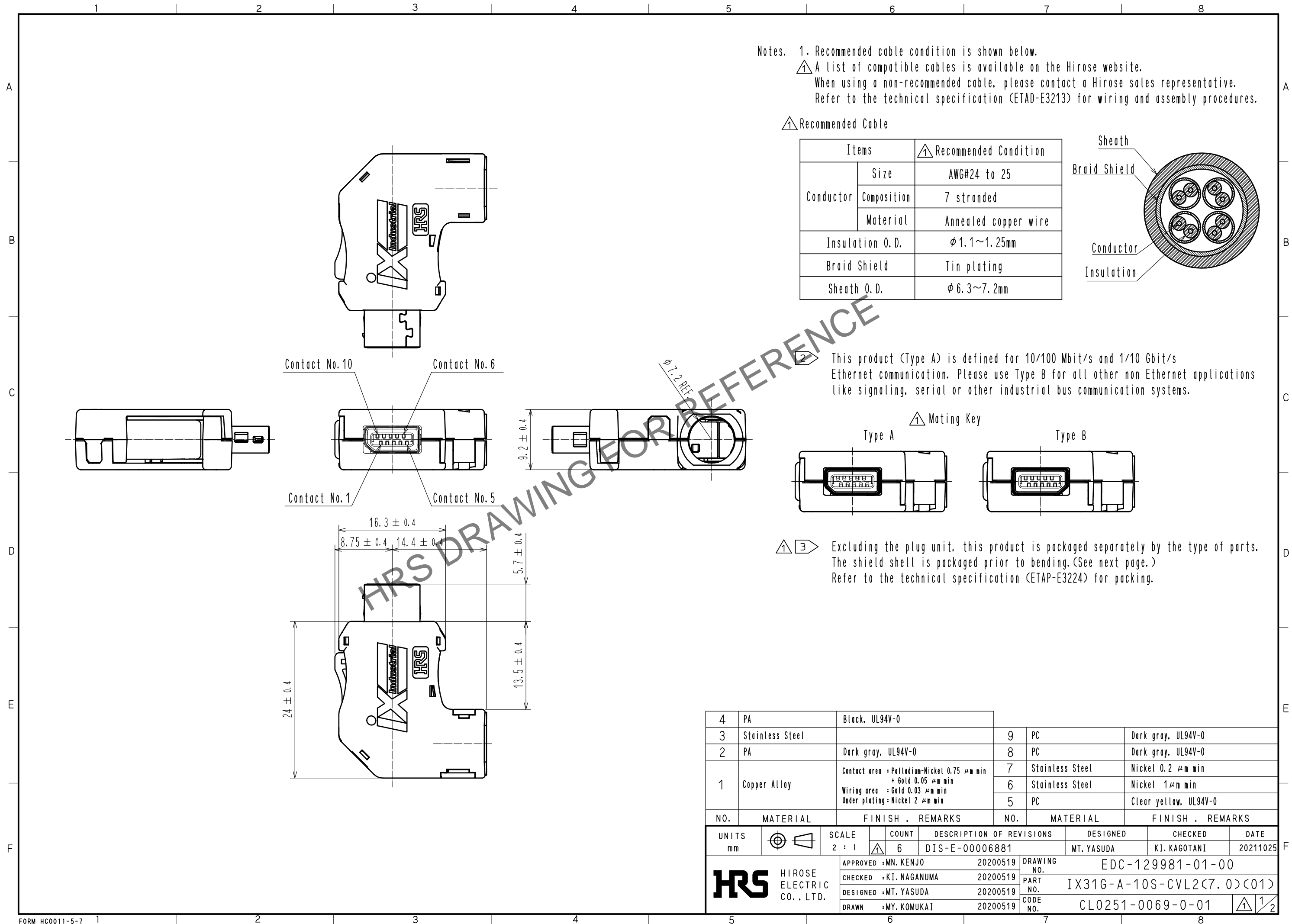


May.1.2024 Copyright 2024 HIROSE ELECTRIC CO., LTD. All Rights Reserved.
In case of consideration for using Automotive equipment / device which demand high reliability, kindly contact our sales window correspondents.

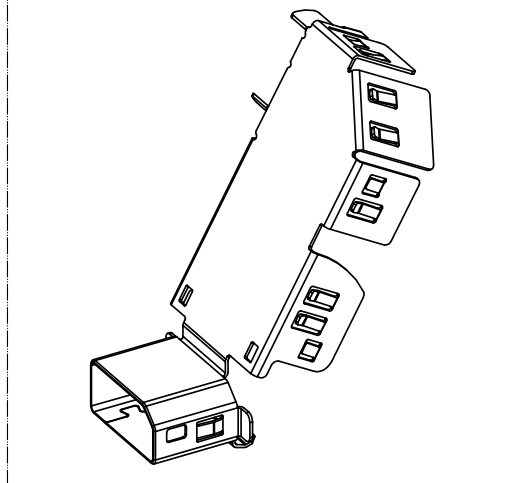


May.1.2024 Copyright 2024 HIROSE ELECTRIC CO., LTD. All Rights Reserved.
In case of consideration for using Automotive equipment / device which demand high reliability, kindly contact our sales window correspondents.

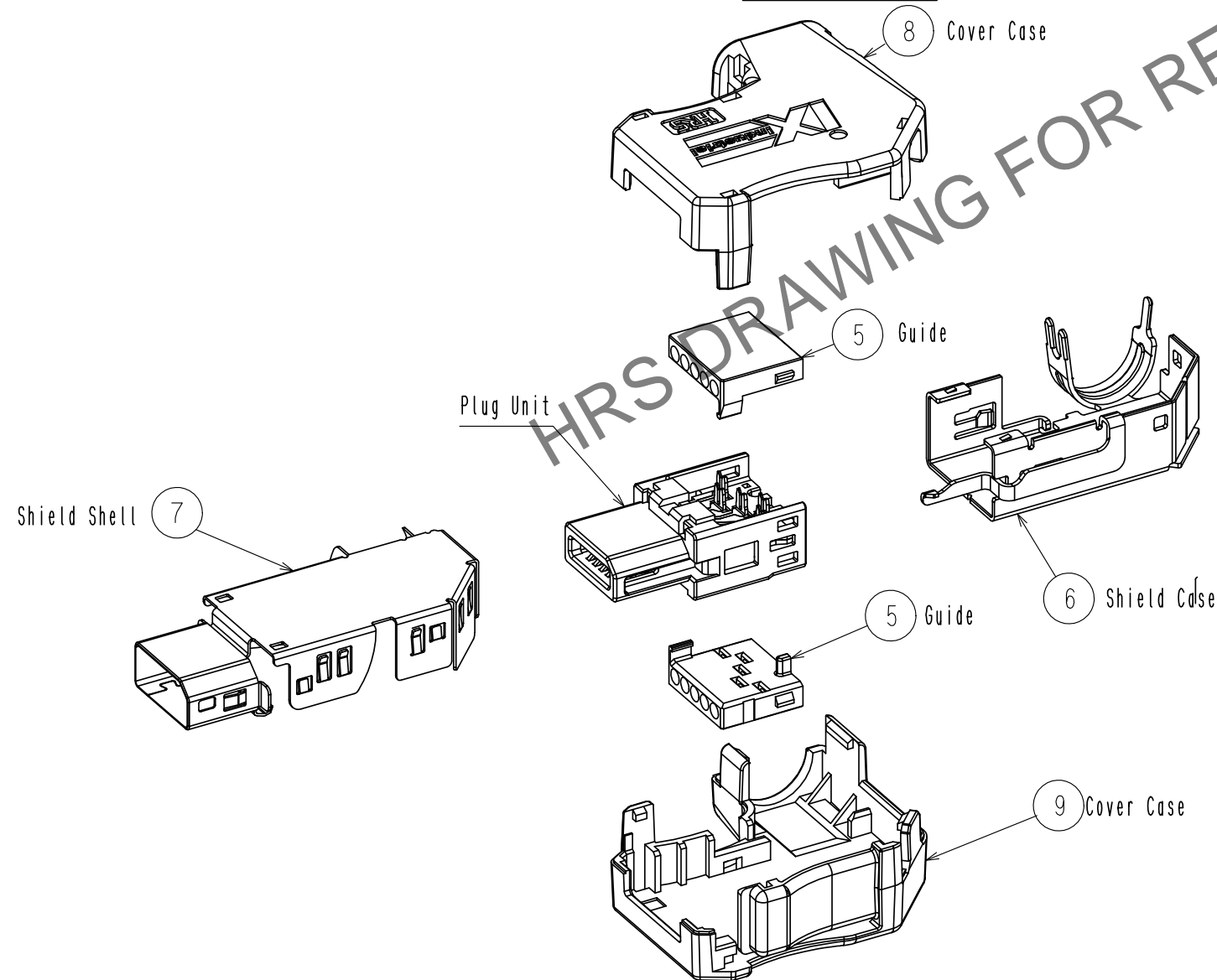
2 Pin Assignment For 10/100 Mbit/s And 1/10 Gbit/s Ethernet

| Contact No. | Signal | |
|-------------|---------------|-------------|
| | 10/100 Mbit/s | 1/10 Gbit/s |
| 1 | TX+ | BI_DA+ |
| 2 | TX- | BI_DA- |
| 3 | N.C | N.C |
| 4 | N.C | BI_DC+ |
| 5 | N.C | BI_DC- |
| 6 | RX+ | BI_DB+ |
| 7 | RX- | BI_DB- |
| 8 | N.C | N.C |
| 9 | N.C | BI_DD+ |
| 10 | N.C | BI_DD- |

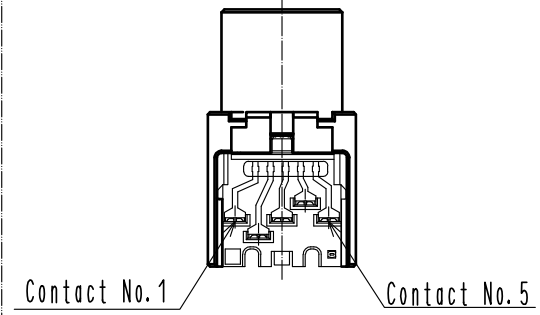
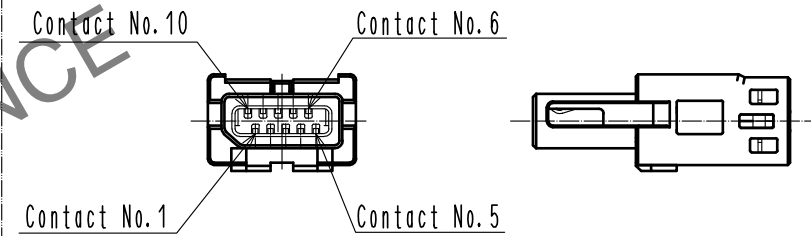
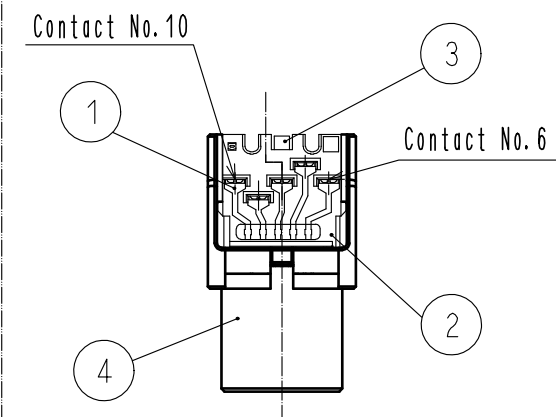
3 Shield Shell Delivery Form



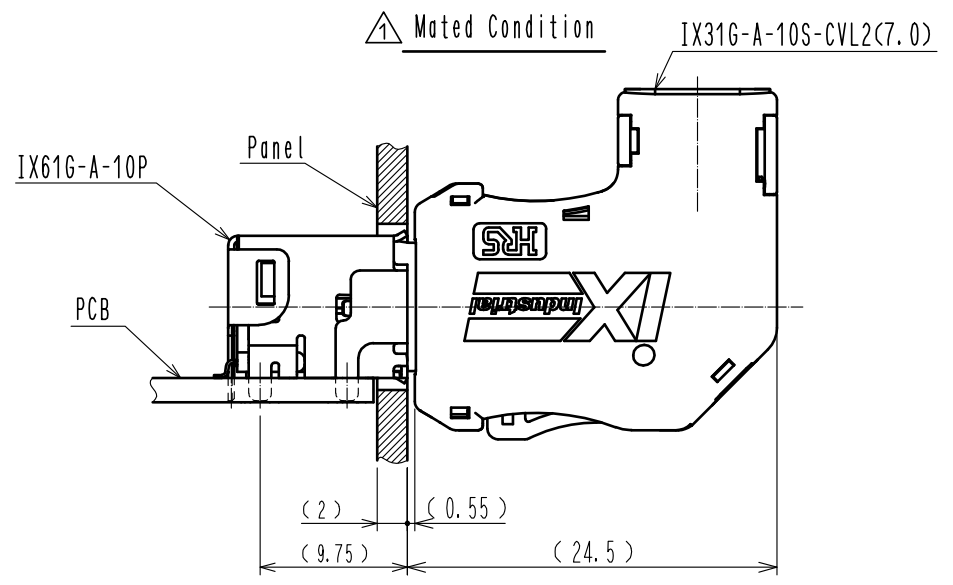
3 Product Structure



Plug Unit



1 Mated Condition



| | | | |
|------------|-------------|---------------------------|-----|
| HRS | DRAWING NO. | EDC-129981-01-00 | |
| | PART NO. | IX31G-A-10S-CVL2<7.0>(01) | |
| | CODE NO. | CL0251-0069-0-01 | 1/2 |
| | | | |