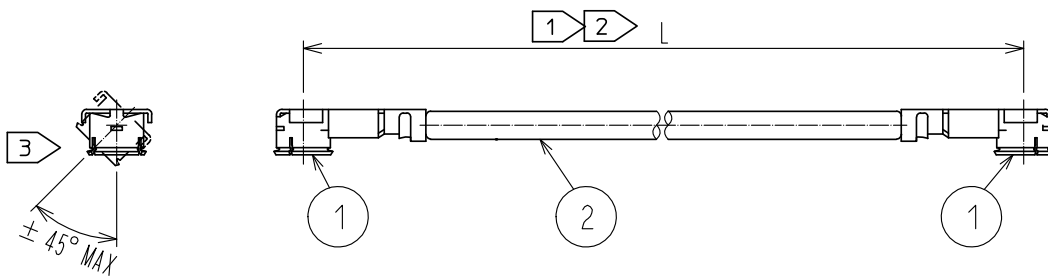


Oct.1.2024 Copyright 2024 HIROSE ELECTRIC CO., LTD. All Rights Reserved.  
 In case of consideration for using Automotive equipment / device which demand high reliability, kindly contact our sales window correspondents.



Part No.	Cable color
~084N1~	White
~084N2~	Black
~084N4~	Blue

NOTE ① We indicate the length of the harness on the last of product name, 'L' part.

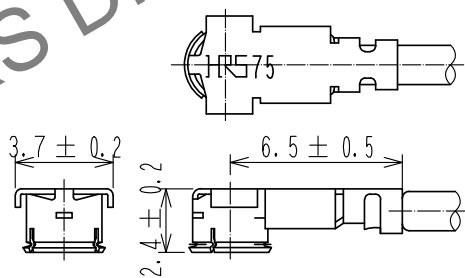
② Tolerance for 【L】

Length L [mm]	Tolerance [mm]
$35 \leq L \leq 200$	$\pm 4$
$200 < L \leq 500$	$\pm 8$
$500 < L \leq 1000$	$\pm 12$
$1000 < L$	$\pm 1.5\%$

③ Connector rotation angle is within  $\pm 45$  degree from the above image.  
 For long length in the case of  $L > 500$ , the angle is optional.

4. Specifications are subject to change without notice.

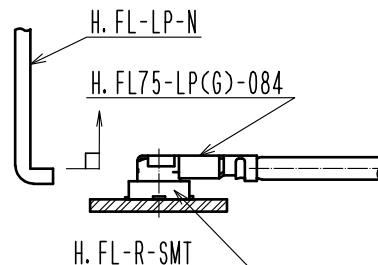
【 DIMENSIONS OF CONNECTOR 】



For stable supply of this series, material supplier of piece part#1 will be changed during 2019-2022. Please note this change in advance. There will be no difference in product performance and quality.

【 PRECAUTIONS FOR HANDLING 】

- ◆ Connector insertion and extraction
  - Connector shall be extracted vertically by specialised extraction JIG.  
 Part No. : H.FL-LP-NCCL Code:CL331-0551-7)  
 Never hold the cable when extracting the cable because it damages the connector.
  - Insert the connector as perpendicularly to the mating surface as possible by aligning the mating axes of both connectors. Do not excessively slant the connectors when inserting.



1	H.FL75-LP(G)-084	CL331-0808-1	2	1.5Dia. coaxial cable			
NO.	PART NO.	CODE NO.	NO.	PART NO.			
UNITS mm		SCALE FREE	COUNT 	DESCRIPTION OF REVISIONS	DESIGNED MS. MATSUMOTO	CHECKED MT. KANEKO	DATE 20181218
HIROSE ELECTRIC CO., LTD.		APPROVED :NK. NINOMIYA 20161108	DRAWING NO. EDC-373598-00-00				
		CHECKED :NK. NINOMIYA 20161108	PART NO. H.FL75-2LPG-084N*-A-L				
		DESIGNED :KS. TAKAHASHI 20161108	CODE NO. CL321-5111-4-00				
		DRAWN :KS. TAKAHASHI 20161108					