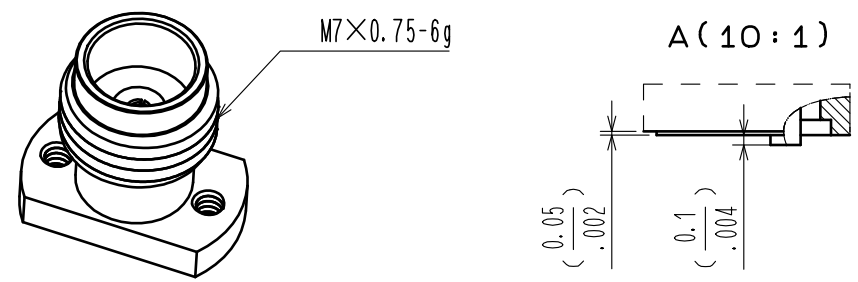
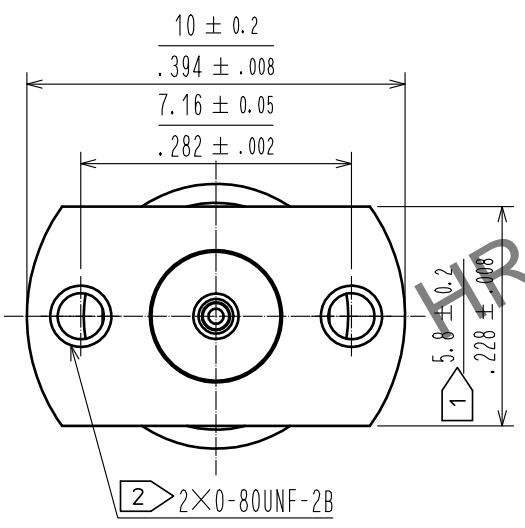
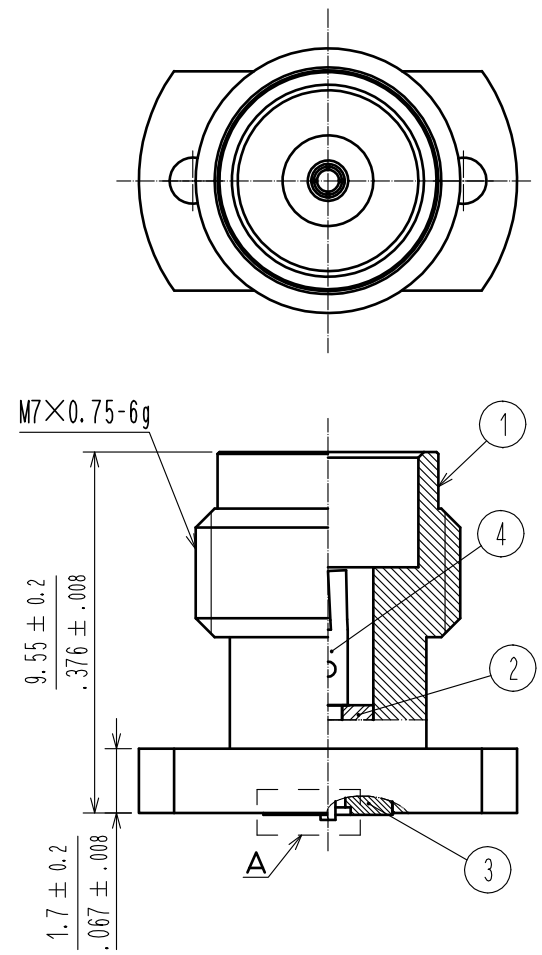
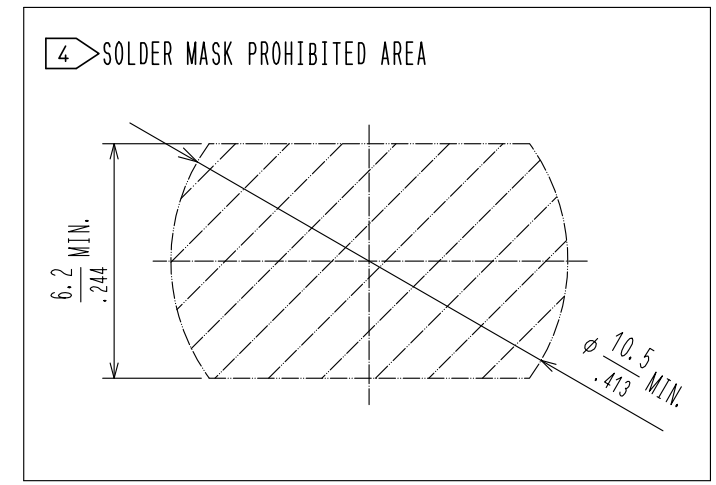
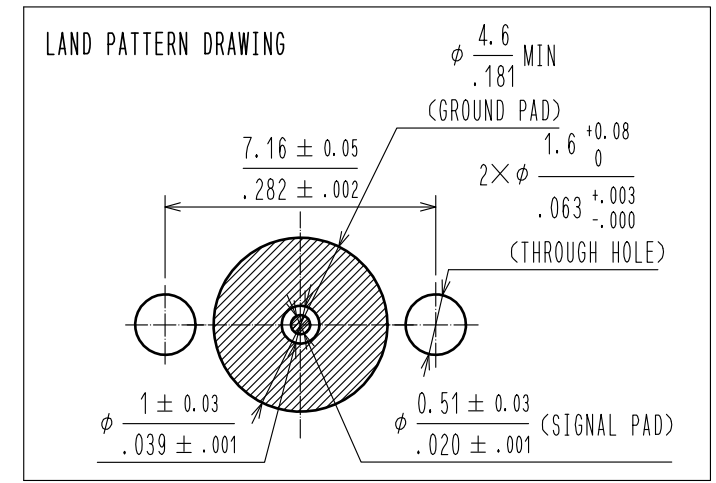
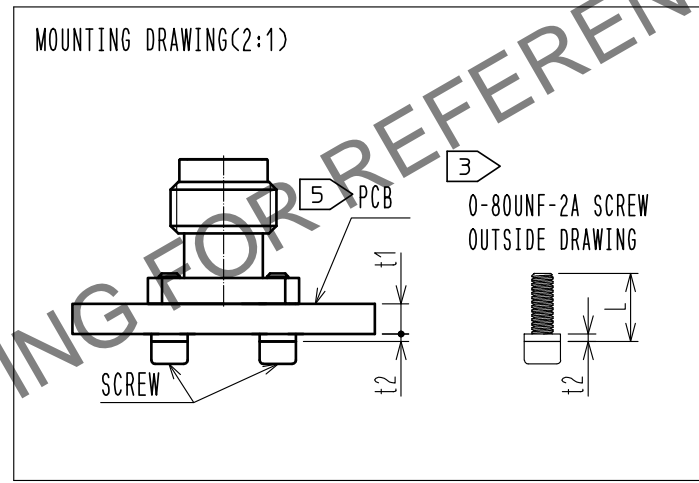


Apr.1.2024 Copyright 2024 HIROSE ELECTRIC CO., LTD. All Rights Reserved.  
In case of consideration for using Automotive equipment / device which demand high reliability, kindly contact our sales window correspondents.

4 (Deleted duplication)



- NOTES
- 1 WHEN MATING THE CONNECTOR, PLEASE HOLD THE FRAISE WITH SPANNER NOT TO PLACE STRESS ON PCB BY THE TORQUE.
  - 2 0-80UNF-2B SCREW TIGHTENING TORQUE IS 0.09N · m. PLEASE TIGHTEN THE SCREWS EVENLY WHEN MOUNTING THE CONNECTORS TO ENSURE STABLE ELECTRICAL CONTACT.
  - 3 PLEASE USE A PCB MOUNTING SCREW OF THE LENGTH OF L(mm)  
THE LENGTH OF L(mm) IS PCB THICKNESS t1(mm) + SPRING WASHER THICKNESS t2(mm) + 2(mm).  
PLEASE USE A SCREW WITH A SPRING WASHER.
  - 4 Hatched area indicates the area that solder mask is prohibited.
  - 5 RECOMMENDED PCB THICKNESS t1 IS GREATER THAN 1.0mm.
  - 6. THIS PRODUCT IS A SOLDERLESS CONNECTOR FOR PROTOTYPE EVALUATION OF HIGH SPEED TRANSMISSION BOARDS.  
IT IS NOT RECOMMENDED FOR USE IN ACTUAL COMMERCIAL EQUIPMENT.
  - 7. THIS CONNECTOR IS OPTIMIZED FOR IMPEDANCE 42.5Ω SIGNAL LINE.



RoHS COMPLIANT

2	PTFE		4	BERYLLIUM COPPER	GOLD PLATING
1	STAINLESS STEEL	PASSIVATE	3	STAINLESS STEEL	GOLD PLATING
NO.	MATERIAL	FINISH . REMARKS	NO.	MATERIAL	FINISH . REMARKS
UNITS mm/inch		SCALE 5 : 1	COUNT 2	DESCRIPTION OF REVISIONS DIS-D-00016641	DESIGNED TS. KANEKO
HIROSE ELECTRIC CO., LTD.				APPROVED : KY. SHIMIZU 20160830	CHECKED TS. NAKAGAWA
				CHECKED : TO. KATAYAMA 20160830	DATE 20230824
				DESIGNED : TP. MATSUMOTO 20160829	
				DRAWN : TP. MATSUMOTO 20160829	
				DRAWING NO. EDC-368164-00-02	
				PART NO. H2. 4-R-SR2-IN	
				CODE NO. CL0338-0602-0-00	
					1/1