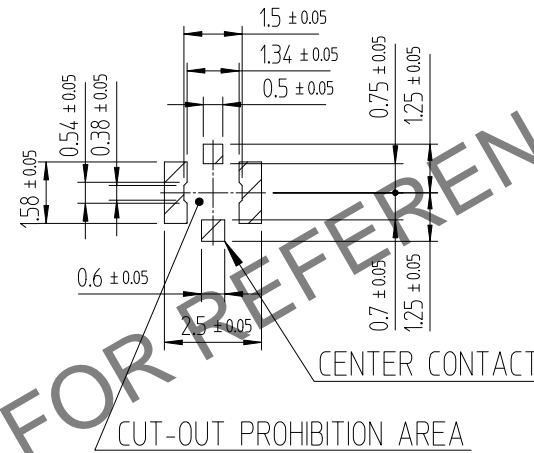


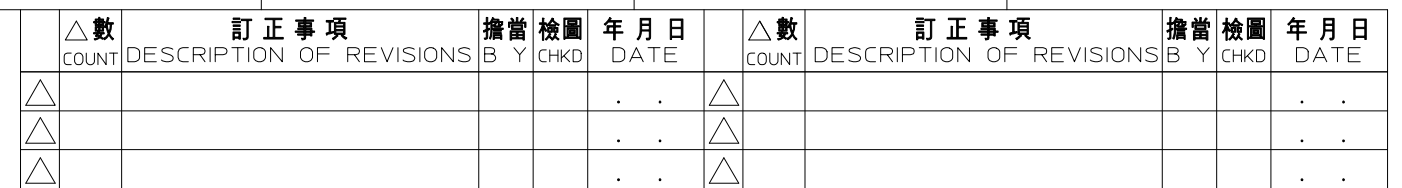
NOTES:

- 1 : THE QUANTITY OF K.FL2-R-SMT-1 IS 10,000 CONNECTORS PER REEL.
- 2 : FOR THE POSSIBILITY OF BREAKAGE OR DEFORMATION DO NOT MATE THIS CONNECTOR WITH PARTNER K.FL2-LP-040 BEFORE MOUNTING ON PC BOARD.
- 3 : USE ALL PRODUCTS WITHIN 6 MONTHS AFTER THE DELIVERY.  
STORE THEM IN MANUFACTURER'S PACKAGE OR TIGHTLY RE-CLOSED BOX WITH THE FOLLOWING CONDECTIONS. CHECK THE TERMINAL SOLDERABILITY BEFORE USE IF THE PRODUCT HAS BEEN STORED FOR MORE THAN 6 MONTHS.  
TEMPERATURE : -10°C TO +40°C  
HUMIDITY : 15 TO 85% RH
- 4 : ENVIRONMENTAL CONDITIONS  
DO NOT USE THE PRODUCTS UNDER THE ENVIRONMENTAL CONDITIONS AS SHOWN BELOW DUE TO POSSIBLE PRODUCT DETERIORATION.  
SPECIAL GAS ATMOSPHERE(HYDROGEN SULFIDE GAS, SULFUR SULFIDE GAS AND HYDROGEN CHLORIDE GAS)  
PLACE ATTENTION REQUIRED:HEATING SYSTEM, AREA NEAR HOT SPRING, VOLCANIC MOUNTAIN AND ALIKE.  
WATER SPLACHED AND CONDENSATION PLACES.  
PLACE ATTENTION REQUIRED:HARSH TEMPERATURE CHANGE.
- 5 : PLEASE CONTACT US IN CASE YOU WILL MAKE DIFFERENT SETTINGS FROM OUR RECOMMENDATION.
- 6 : LEAD CO-PLANARITY SHALL BE 0.1MAX.

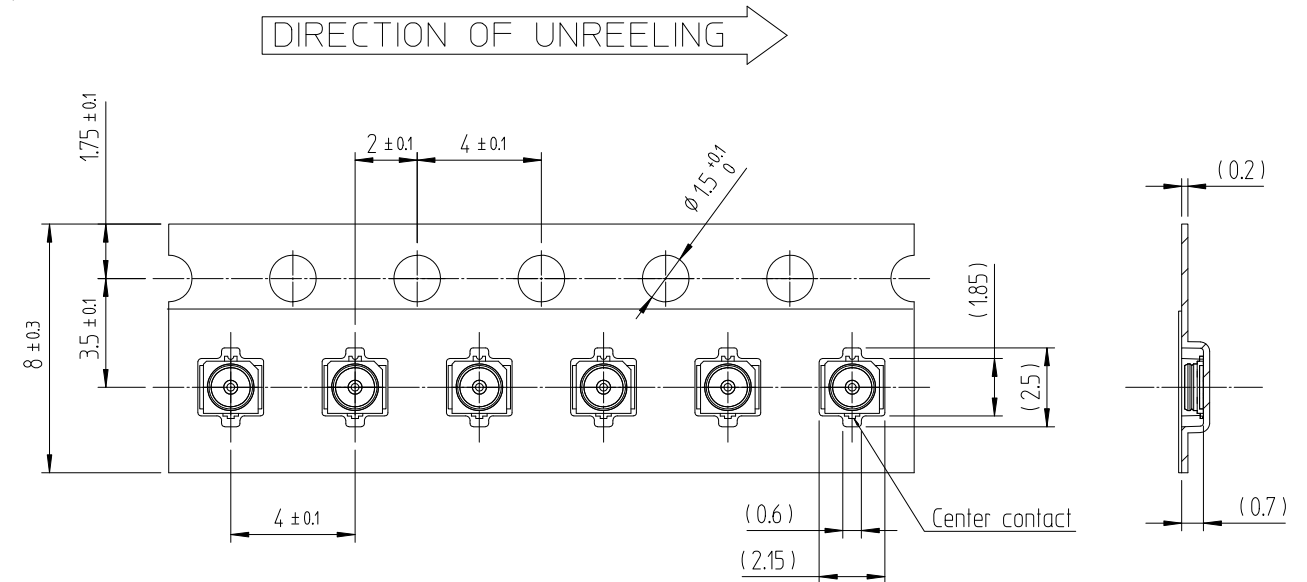
RECOMMENDED PCB LAYOUT  
(MOUNTING SURFACE SIDE)(5:1)



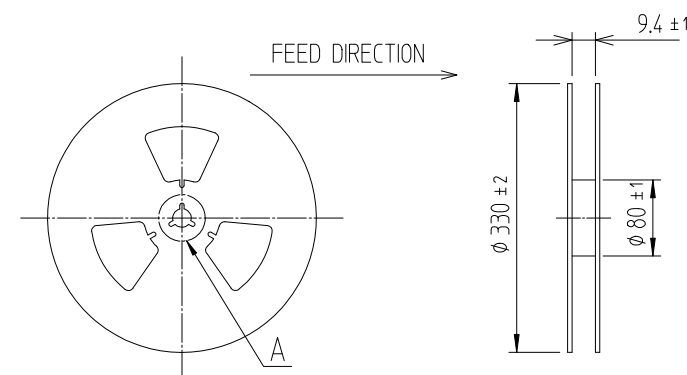
### RECOMMENDED METAL MASK DIMENSIONS(5:1)



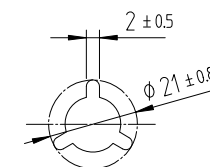
EMBOSSSED TAPING DRAWING (4:1)



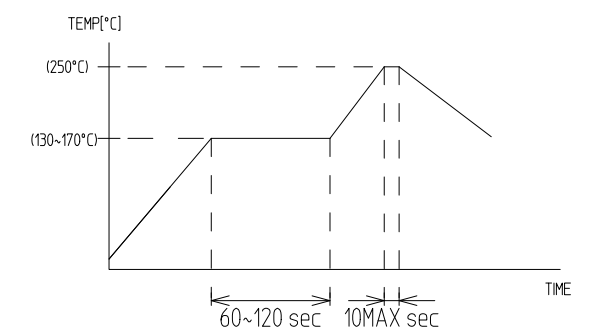
REEL DRAWING(FREE)



DETAIL 'A'(FREE)

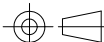



## 5 RECOMMENDED REFLOW TEMPERATURE PROFILE



NOTE  
MOUNTING TEMPERATURE PROFILE VARIES ACCORDING  
TO BOARD SIZE, SOLDER TYPE APPLIED AND SOLDER THICKNESS  
- METAL MASK THICKNESS : 0.1mm

RoHS COMPLIANT, Halogen Free

			3	LCP	<BLACK>, UL94V-0		
1	PHOSPHOR BRONZE	UNDER PLATING : NICKEL OVER PLATING : GOLD	2	BRASS	UNDER PLATING : NICKEL OVER PLATING : GOLD		
NO.	MATERIAL	FINISH,REMARKS	NO.	MATERIAL	FINISH,REMARKS		
CODE NO. (OLD)			DRAWN  W.Y.AHN 19.01.25	DESIGNED  W.Y.AHN 19.01.25	CHECKED  H.S.KIM 19.01.25	APPROVED  H.S.KIM 19.01.25	RELEASED <div>ENG 19.01.25 DEPT</div>
	DRAWING NO.  EDC3-632042-80			PART NO.  K.FL2-R-SMT-1 (800)			
SCALE 20:1	 HIROSE KOREA CO.,LTD.			CODE NO  CL6345-0002-1-800			<div>1 1</div>
UNITS mm							