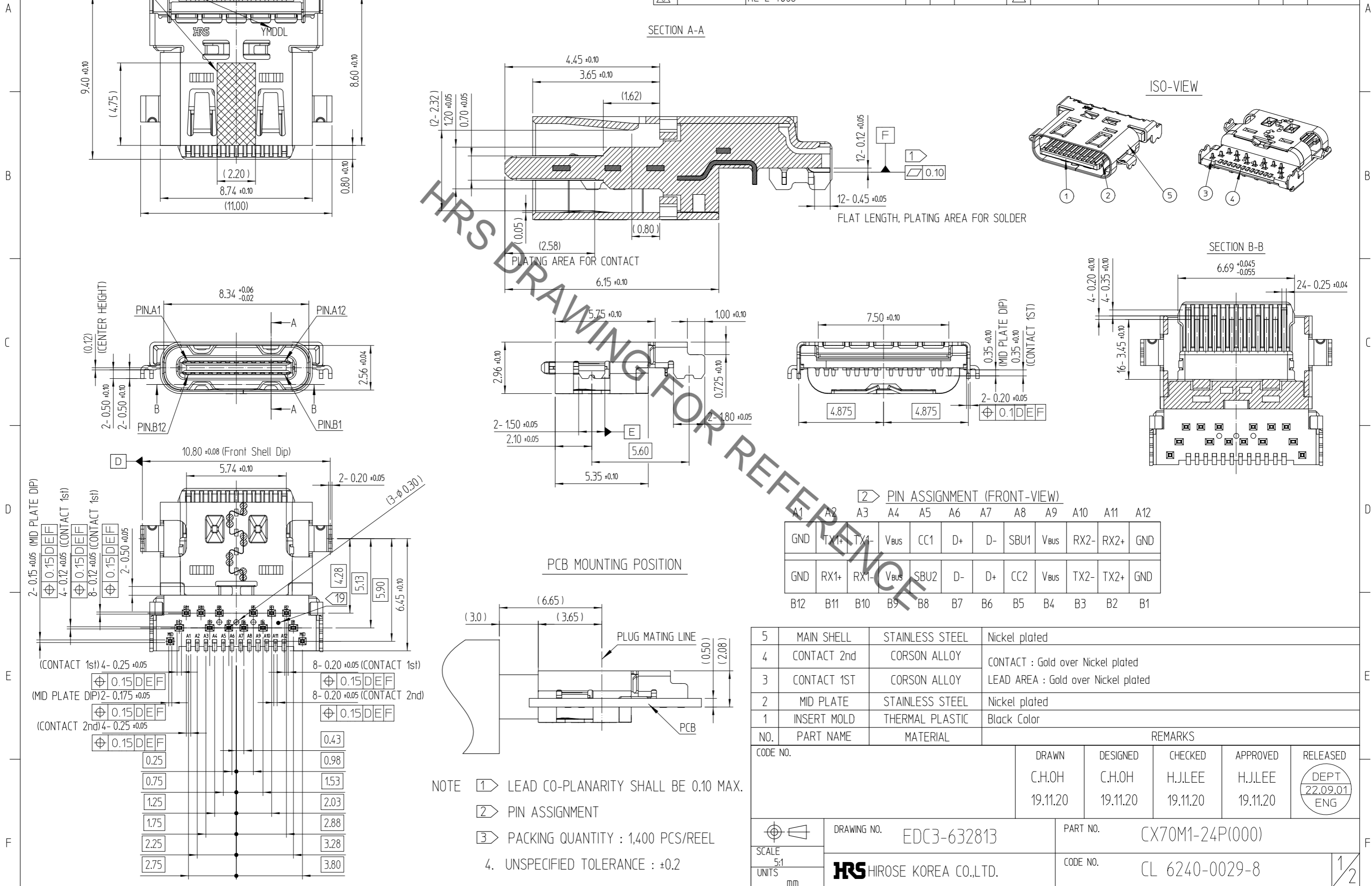


May.1.2023 Copyright 2023 HIROSE ELECTRIC CO., LTD. All Rights Reserved.
 In case of consideration for using Automotive equipment / device which demand high reliability, kindly contact our sales window correspondents.

改正 REV.	變更履歷 NO. ECA NO.	訂正事項 DESCRIPTION OF REVISIONS	擔當 B Y	檢圖 CHKD	年月日 DATE	改正 REV.	變更履歷 NO. ECA NO.	訂正事項 DESCRIPTION OF REVISIONS	擔當 B Y	檢圖 CHKD	年月日 DATE
△	2	RE-2-1450	OCH	LHJ	20.04.06	△					
△	-	Revised	KYI	LHJ	22.03.07	△					
△	-	RE-2-1965	KYJ	LHJ	22.09.01	△					



2 > PIN ASSIGNMENT (FRONT-VIEW)

A1	A2	A3	A4	A5	A6	A7	A8	A9	A10	A11	A12
GND	TX1+	TX1-	Vbus	CC1	D+	D-	SBU1	Vbus	RX2-	RX2+	GND
GND	RX1+	RX1-	Vbus	SBU2	D-	D+	CC2	Vbus	TX2-	TX2+	GND
B12	B11	B10	B9	B8	B7	B6	B5	B4	B3	B2	B1

NO.	PART NAME	MATERIAL	REMARKS
5	MAIN SHELL	STAINLESS STEEL	Nickel plated
4	CONTACT 2nd	CORSON ALLOY	CONTACT : Gold over Nickel plated
3	CONTACT 1ST	CORSON ALLOY	LEAD AREA : Gold over Nickel plated
2	MID PLATE	STAINLESS STEEL	Nickel plated
1	INSERT MOLD	THERMAL PLASTIC	Black Color

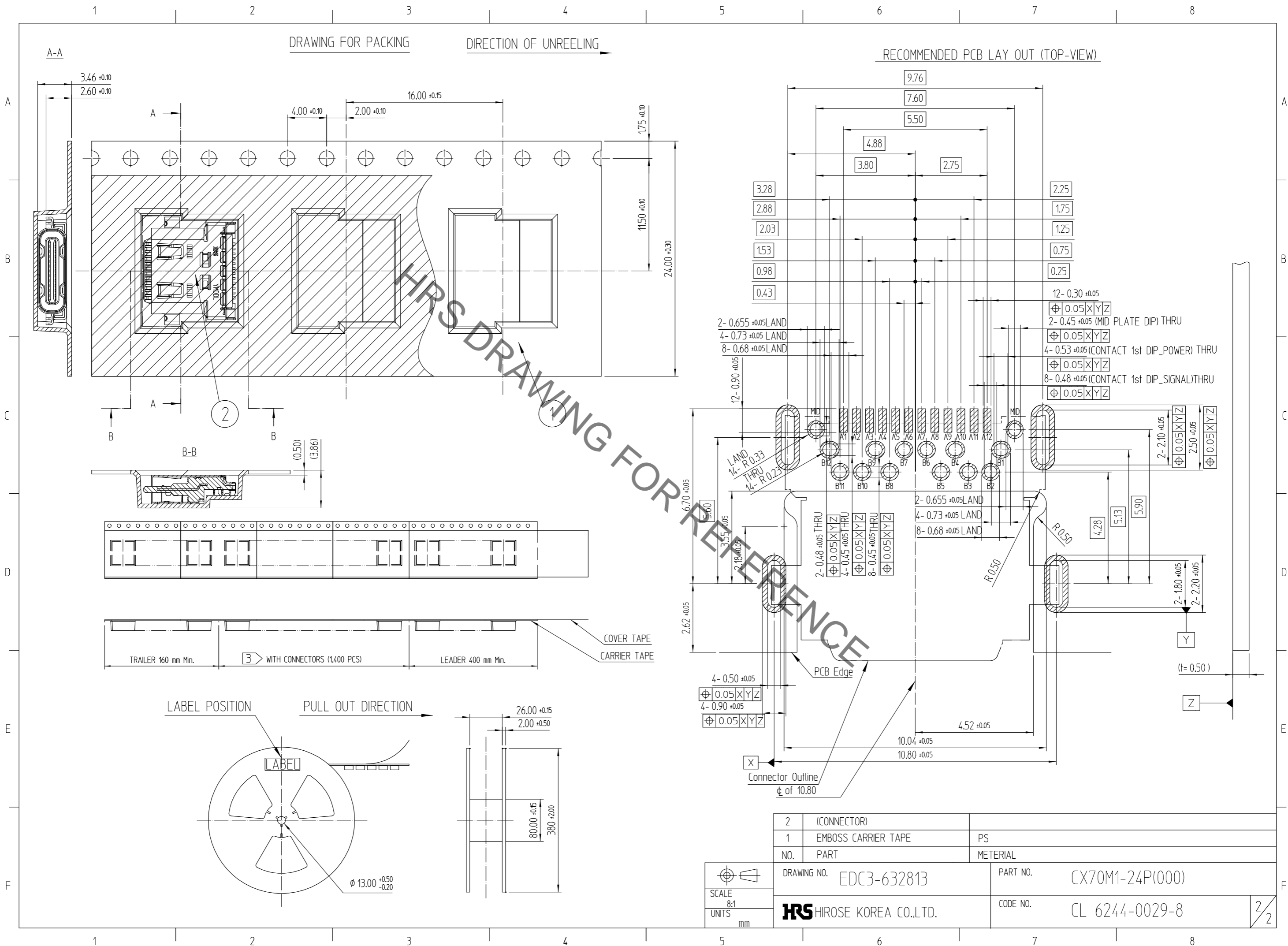
CODE NO.	DRAWN	DESIGNED	CHECKED	APPROVED	RELEASED
	C.H.OH	C.H.OH	H.J.LEE	H.J.LEE	DEPT 22.09.01 ENG
	19.11.20	19.11.20	19.11.20	19.11.20	

SCALE	DRAWING NO.	PART NO.
5:1	EDC3-632813	CX70M1-24P(000)
UNITS mm	HRS HIROSE KOREA CO.,LTD.	CODE NO. CL 6240-0029-8

NOTE

- 1 > LEAD CO-PLANARITY SHALL BE 0.10 MAX.
- 2 > PIN ASSIGNMENT
- 3 > PACKING QUANTITY : 1,400 PCS/REEL
4. UNSPECIFIED TOLERANCE : ±0.2

May.1.2023 Copyright 2023 HIROSE ELECTRIC CO., LTD. All Rights Reserved.
 In case of consideration for using Automotive equipment / device which demand high reliability, kindly contact our sales window correspondents.



DRAWING FOR PACKING DIRECTION OF UNREELING →

RECOMMENDED PCB LAY OUT (TOP-VIEW)

TRAILER 160 mm Min. WITH CONNECTORS (1,400 PCS) LEADER 400 mm Min. COVER TAPE CARRIER TAPE

LABEL POSITION PULL OUT DIRECTION →

- 2- 0.655 ±0.05 LAND
- 4- 0.73 ±0.05 LAND
- 8- 0.68 ±0.05 LAND
- 12- 0.30 ±0.05
- ⌀ 0.05 X | Y | Z
- 2- 0.45 ±0.05 (MID PLATE DIP) THRU
- ⌀ 0.05 X | Y | Z
- 4- 0.53 ±0.05 (CONTACT 1st DIP_POWER) THRU
- ⌀ 0.05 X | Y | Z
- 8- 0.48 ±0.05 (CONTACT 1st DIP_SIGNAL) THRU
- ⌀ 0.05 X | Y | Z

- LAND 14- R0.33 THRU 14- R0.23
- 2- 0.48 ±0.05 THRU
- ⌀ 0.05 X | Y | Z
- 4- 0.45 ±0.05 THRU
- ⌀ 0.05 X | Y | Z
- 8- 0.45 ±0.05 THRU
- ⌀ 0.05 X | Y | Z
- 2- 0.655 ±0.05 LAND
- 4- 0.73 ±0.05 LAND
- 8- 0.68 ±0.05 LAND

- 4- 0.50 ±0.05
- ⌀ 0.05 X | Y | Z
- 4- 0.90 ±0.05
- ⌀ 0.05 X | Y | Z

2	(CONNECTOR)	
1	EMBOSS CARRIER TAPE	PS
NO.	PART	MATERIAL
DRAWING NO.	EDC3-632813	PART NO. CX70M1-24P(000)
SCALE 8:1	HIROSE KOREA CO.,LTD.	CODE NO. CL 6244-0029-8
UNITS mm		

2/2