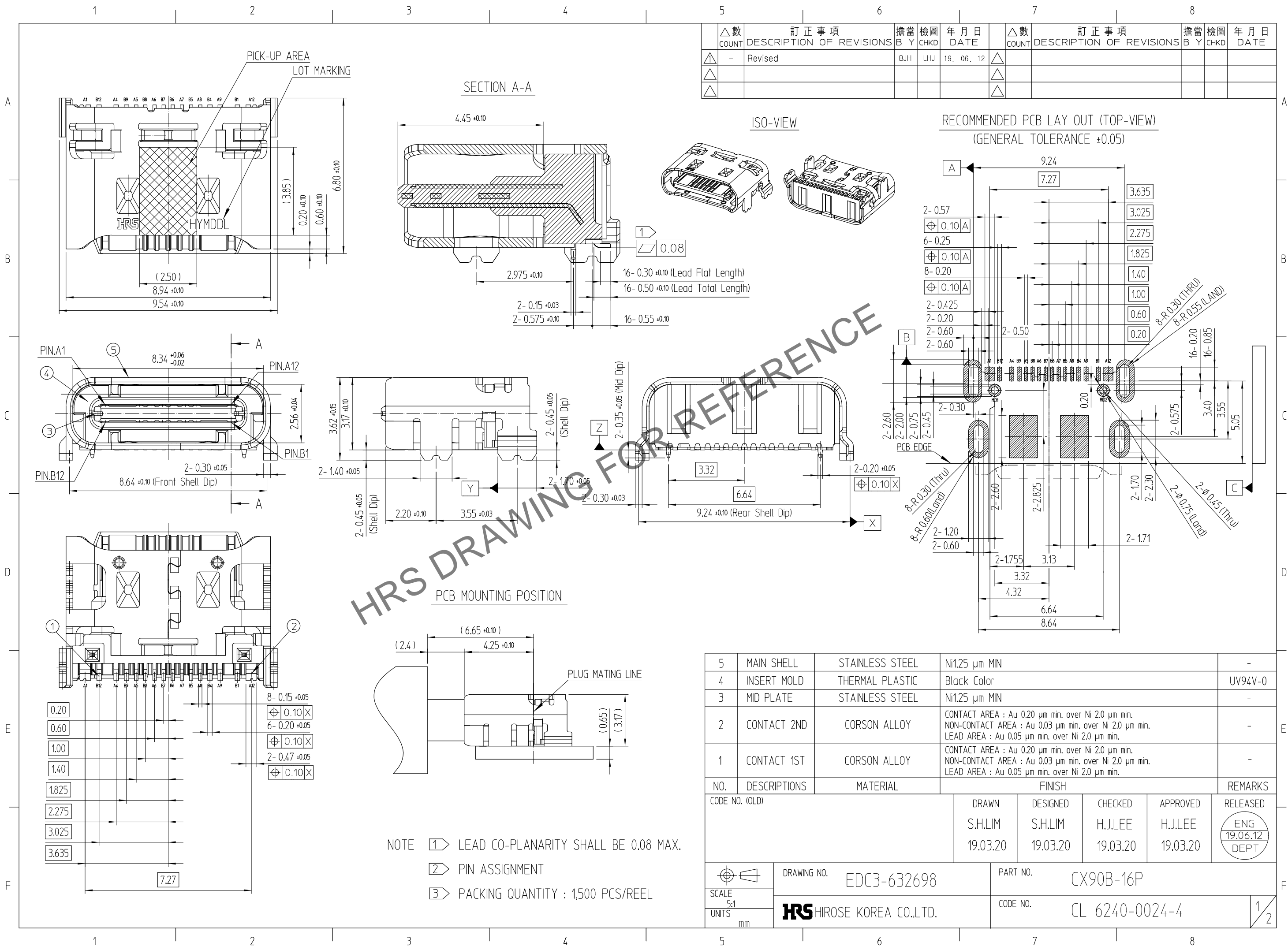


Jan.1.2025 Copyright 2025 HIROSE ELECTRIC CO., LTD. All Rights Reserved.  
 In case of consideration for using Automotive equipment / device which demand high reliability, kindly contact our sales window correspondents.



△數 COUNT	訂正事項 DESCRIPTION OF REVISIONS	擔當 B Y	檢圖 CHKD	年月日 DATE	△數 COUNT	訂正事項 DESCRIPTION OF REVISIONS	擔當 B Y	檢圖 CHKD	年月日 DATE
△	- Revised	BJH	LHJ	19. 06. 12	△				
△					△				
△					△				

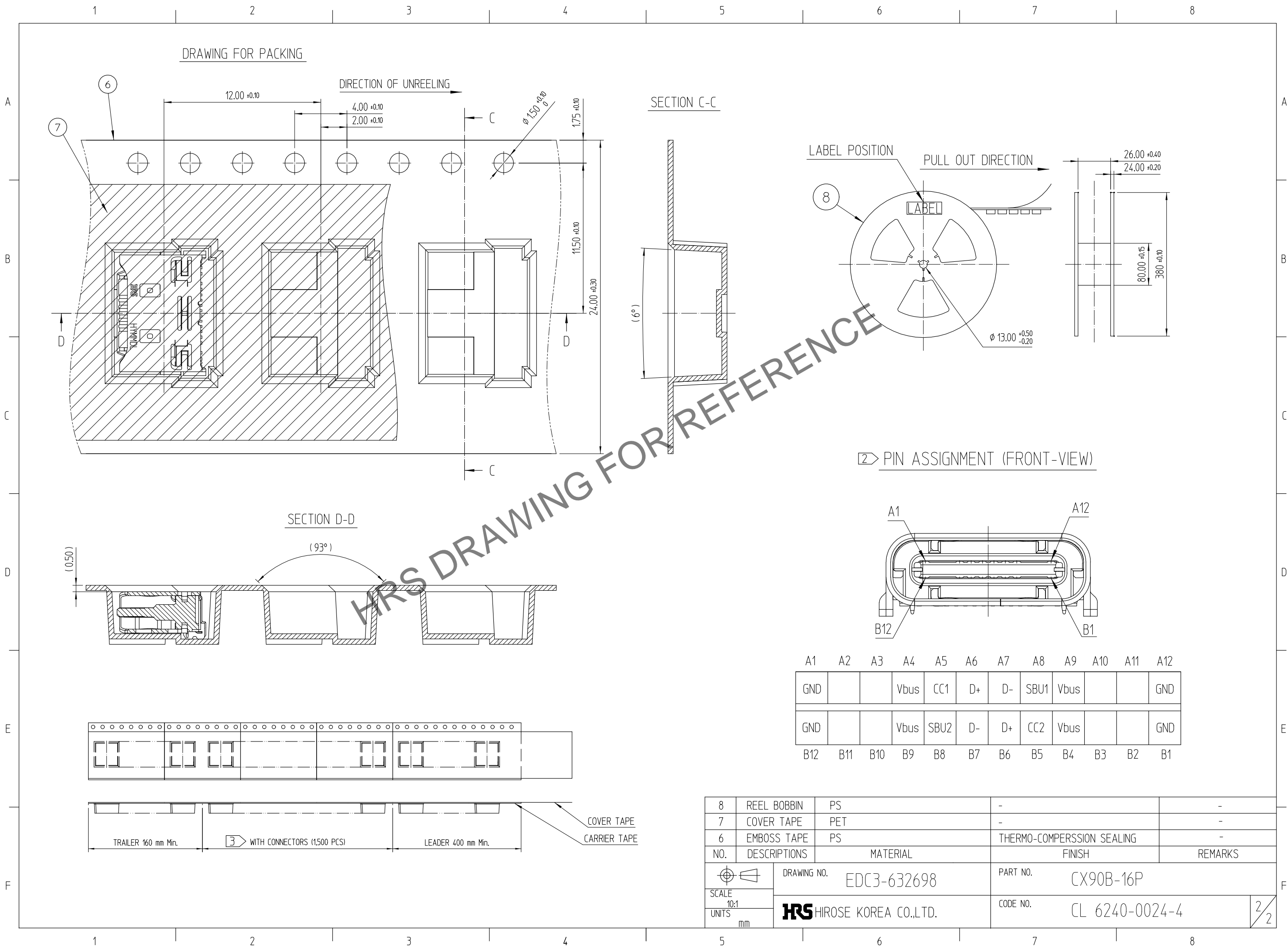
5	MAIN SHELL	STAINLESS STEEL	Ni1.25 μm MIN	-
4	INSERT MOLD	THERMAL PLASTIC	Black Color	UV94V-0
3	MID PLATE	STAINLESS STEEL	Ni1.25 μm MIN	-
2	CONTACT 2ND	CORSON ALLOY	CONTACT AREA : Au 0.20 μm min. over Ni 2.0 μm min. NON-CONTACT AREA : Au 0.03 μm min. over Ni 2.0 μm min. LEAD AREA : Au 0.05 μm min. over Ni 2.0 μm min.	-
1	CONTACT 1ST	CORSON ALLOY	CONTACT AREA : Au 0.20 μm min. over Ni 2.0 μm min. NON-CONTACT AREA : Au 0.03 μm min. over Ni 2.0 μm min. LEAD AREA : Au 0.05 μm min. over Ni 2.0 μm min.	-

NO.	DESCRIPTIONS	MATERIAL	FINISH				REMARKS
CODE NO. (OLD)			DRAWN	DESIGNED	CHECKED	APPROVED	RELEASED
			S.H.LIM	S.H.LIM	H.J.LEE	H.J.LEE	ENG 19.06.12 DEPT
			19.03.20	19.03.20	19.03.20	19.03.20	

SCALE 5:1 UNITS mm	DRAWING NO. EDC3-632698	PART NO. CX90B-16P
	<b>HRS</b> HIROSE KOREA CO.,LTD.	CODE NO. CL 6240-0024-4

NOTE ① LEAD CO-PLANARITY SHALL BE 0.08 MAX.  
 ② PIN ASSIGNMENT  
 ③ PACKING QUANTITY : 1,500 PCS/REEL

Jan.1.2025 Copyright 2025 HIROSE ELECTRIC CO., LTD. All Rights Reserved.  
 In case of consideration for using Automotive equipment / device which demand high reliability, kindly contact our sales window correspondents.



A1	A2	A3	A4	A5	A6	A7	A8	A9	A10	A11	A12
GND			Vbus	CC1	D+	D-	SBU1	Vbus			GND
GND			Vbus	SBU2	D-	D+	CC2	Vbus			GND
B12	B11	B10	B9	B8	B7	B6	B5	B4	B3	B2	B1

8	REEL BOBBIN	PS	-	-
7	COVER TAPE	PET	-	-
6	EMBOSS TAPE	PS	THERMO-COMPRESSION SEALING	
NO.	DESCRIPTIONS	MATERIAL	FINISH	REMARKS
DRAWING NO. EDC3-632698		PART NO. CX90B-16P		
SCALE 10:1		CODE NO. CL 6240-0024-4		
UNITS mm		2/2		