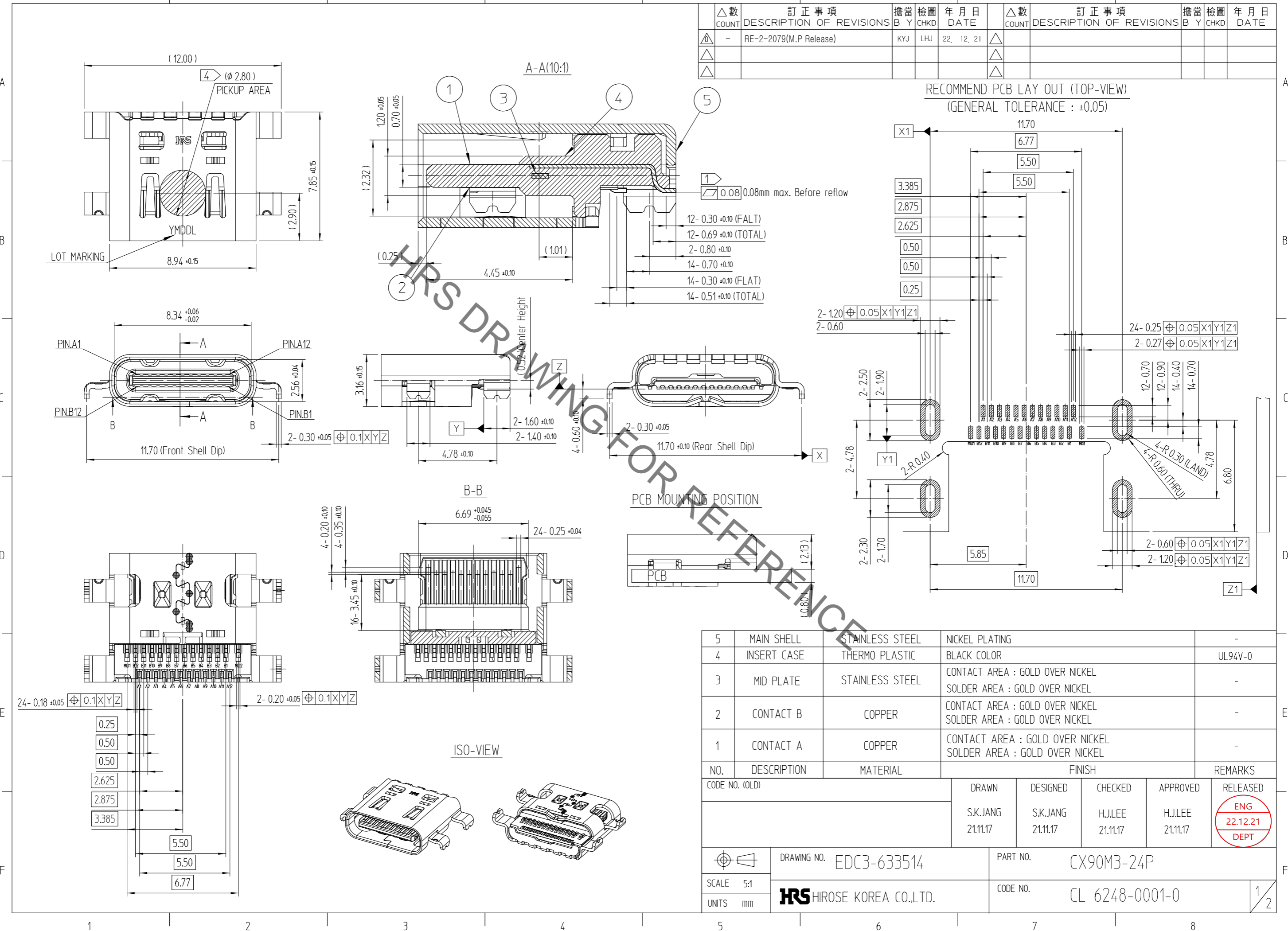


Apr. 1.2023 Copyright 2023 HIROSE ELECTRIC CO., LTD. All Rights Reserved.
 In case of consideration for using Automotive equipment / device which demand high reliability, kindly contact our sales window correspondents.

| △數 COUNT | 訂正事項 DESCRIPTION OF REVISIONS | 擔當 B | 檢圖 CHKD | 年月日 DATE | △數 COUNT | 訂正事項 DESCRIPTION OF REVISIONS | 擔當 B | 檢圖 CHKD | 年月日 DATE |
|-------------|----------------------------------|---------|------------|------------------------|-------------|----------------------------------|---------|------------|-------------|
| △0 | - | | | RE-2-2079(M.P Release) | △ | | | | |
| △ | | | | | △ | | | | |
| △ | | | | | △ | | | | |

RECOMMEND PCB LAY OUT (TOP-VIEW)
 (GENERAL TOLERANCE : ±0.05)



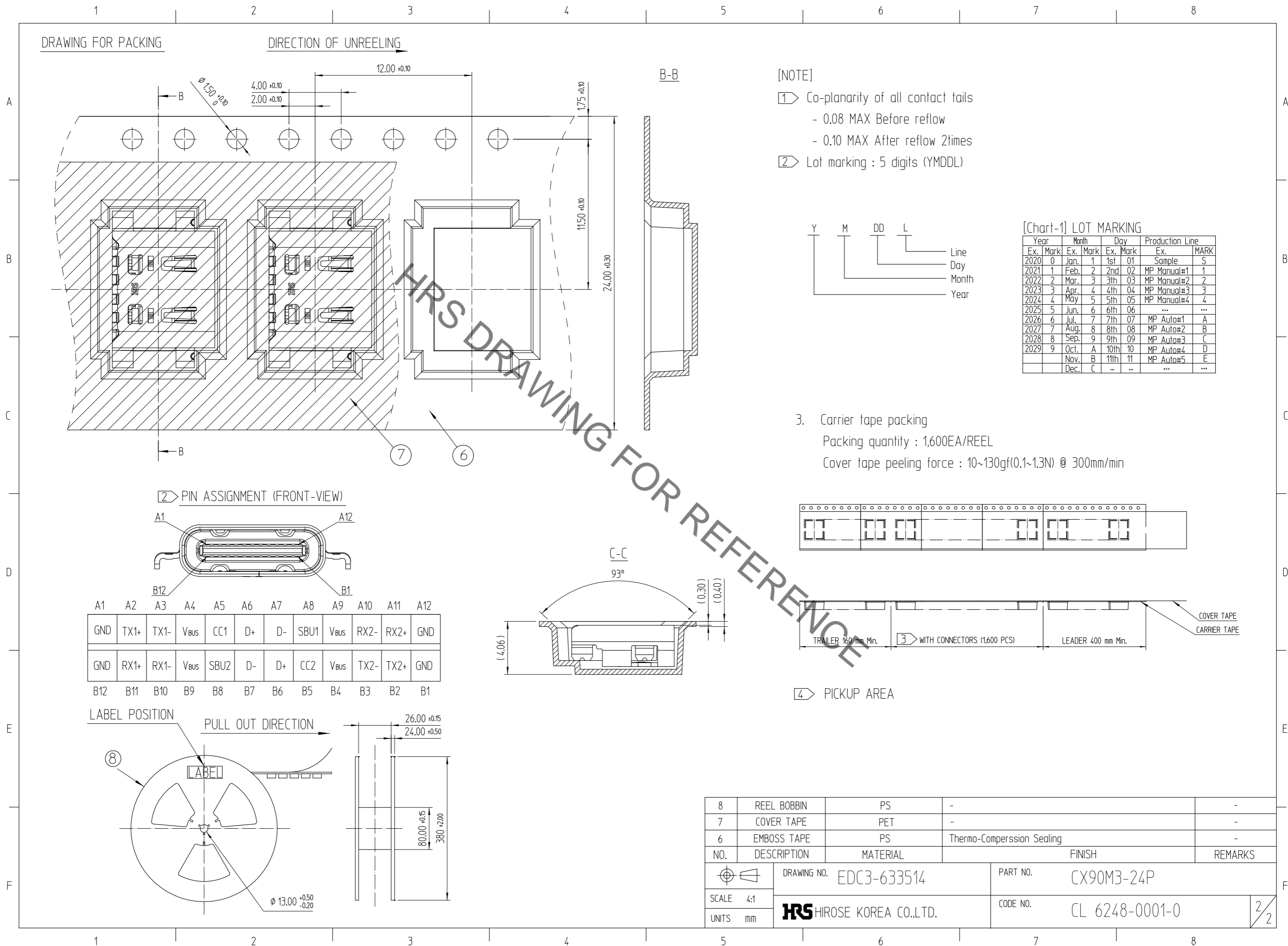
| NO. | DESCRIPTION | MATERIAL | FINISH | REMARKS |
|-----|-------------|-----------------|---|---------|
| 5 | MAIN SHELL | STAINLESS STEEL | NICKEL PLATING | - |
| 4 | INSERT CASE | THERMO PLASTIC | BLACK COLOR | UL94V-0 |
| 3 | MID PLATE | STAINLESS STEEL | CONTACT AREA : GOLD OVER NICKEL SOLDER AREA : GOLD OVER NICKEL | - |
| 2 | CONTACT B | COPPER | CONTACT AREA : GOLD OVER NICKEL SOLDER AREA : GOLD OVER NICKEL | - |
| 1 | CONTACT A | COPPER | CONTACT AREA : GOLD OVER NICKEL SOLDER AREA : GOLD OVER NICKEL | - |

| CODE NO. (OLD) | DRAWN | DESIGNED | CHECKED | APPROVED | RELEASED |
|----------------|----------------------|----------------------|---------------------|---------------------|-------------------------|
| | S.K.JANG 21.11.17 | S.K.JANG 21.11.17 | H.J.LEE 21.11.17 | H.J.LEE 21.11.17 | ENG 22.12.21 DEPT |

| | | | |
|-------------|-------------|----------|----------------|
| DRAWING NO. | EDC3-633514 | PART NO. | CX90M3-24P |
| SCALE | 5:1 | CODE NO. | CL 6248-0001-0 |
| UNITS | mm | | 1/2 |

HRS HIROSE KOREA CO.,LTD.

Apr.1.2023 Copyright 2023 HIROSE ELECTRIC CO., LTD. All Rights Reserved.
 In case of consideration for using Automotive equipment / device which demand high reliability, kindly contact our sales window correspondents.

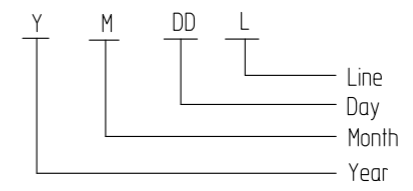


DRAWING FOR PACKING

DIRECTION OF UNREELING

[NOTE]

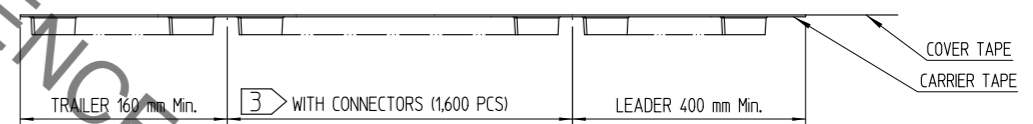
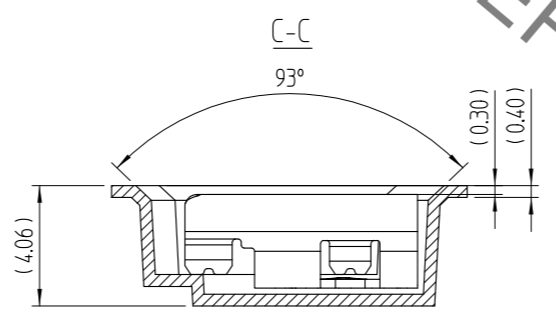
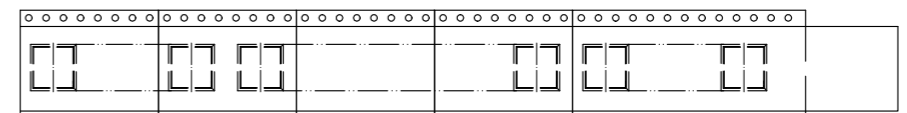
- ① Co-planarity of all contact tails
 - 0.08 MAX Before reflow
 - 0.10 MAX After reflow 2times
- ② Lot marking : 5 digits (YMDDL)



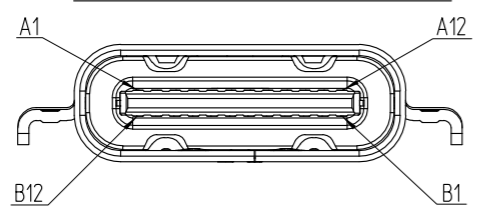
[Chart-1] LOT MARKING

| Year | Month | Day | Production Line | Ex. Mark | MARK |
|------|-------|--------|-----------------|-------------|------|
| 2020 | 0 | Jan. 1 | 1st 01 | Sample | S |
| 2021 | 1 | Feb. 2 | 2nd 02 | MP Manual#1 | 1 |
| 2022 | 2 | Mar. 3 | 3th 03 | MP Manual#2 | 2 |
| 2023 | 3 | Apr. 4 | 4th 04 | MP Manual#3 | 3 |
| 2024 | 4 | May 5 | 5th 05 | MP Manual#4 | 4 |
| 2025 | 5 | Jun. 6 | 6th 06 | ... | ... |
| 2026 | 6 | Jul. 7 | 7th 07 | MP Auto#1 | A |
| 2027 | 7 | Aug. 8 | 8th 08 | MP Auto#2 | B |
| 2028 | 8 | Sep. 9 | 9th 09 | MP Auto#3 | C |
| 2029 | 9 | Oct. A | 10th 10 | MP Auto#4 | D |
| | | Nov. B | 11th 11 | MP Auto#5 | E |
| | | Dec. C | ... | ... | ... |

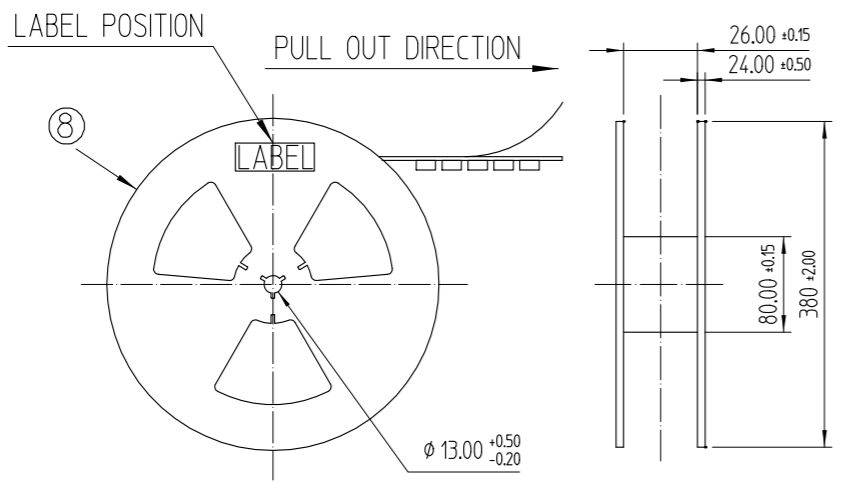
- 3. Carrier tape packing
 Packing quantity : 1,600EA/REEL
 Cover tape peeling force : 10~130gf(0.1~1.3N) @ 300mm/min



② PIN ASSIGNMENT (FRONT-VIEW)



| A1 | A2 | A3 | A4 | A5 | A6 | A7 | A8 | A9 | A10 | A11 | A12 |
|-----|------|------|------|------|----|----|------|------|------|------|-----|
| GND | TX1+ | TX1- | VBUS | CC1 | D+ | D- | SBU1 | VBUS | RX2- | RX2+ | GND |
| B12 | B11 | B10 | B9 | B8 | B7 | B6 | B5 | B4 | B3 | B2 | B1 |
| GND | RX1+ | RX1- | VBUS | SBU2 | D- | D+ | CC2 | VBUS | TX2- | TX2+ | GND |



④ PICKUP AREA

| 8 | REEL BOBBIN | PS | - | - |
|-----|-------------|-------------|----------------------------|-------------------------|
| 7 | COVER TAPE | PET | - | - |
| 6 | EMBOSS TAPE | PS | Thermo-Comperssion Sealing | - |
| NO. | DESCRIPTION | MATERIAL | FINISH | REMARKS |
| | DRAWING NO. | EDC3-633514 | | PART NO. CX90M3-24P |
| | SCALE | 4:1 | | CODE NO. CL 6248-0001-0 |
| | UNITS | mm | | 2/2 |