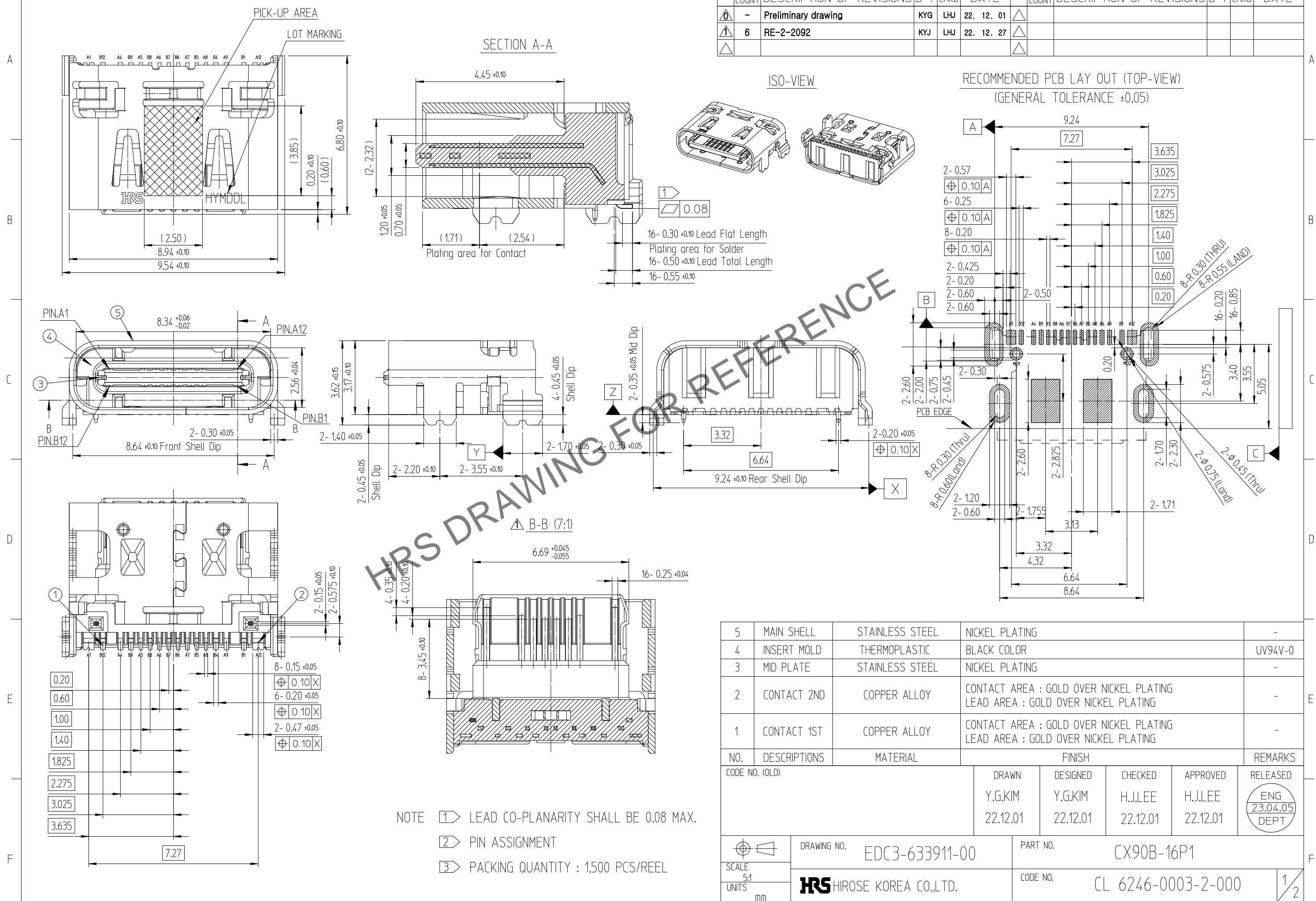


Jul.1.2024 Copyright 2024 HIROSE ELECTRIC CO., LTD. All Rights Reserved.
 In case of consideration for using Automotive equipment / device which demand high reliability, kindly contact our sales window correspondents.

△數 COUNT	訂正事項 DESCRIPTION OF REVISIONS	擔當 B	檢圖 CHKD	年月日 DATE	△數 COUNT	訂正事項 DESCRIPTION OF REVISIONS	擔當 B	檢圖 CHKD	年月日 DATE
0	- Preliminary drawing	KYG	LHJ	22. 12. 01	△				
1	6 RE-2-2092	KYJ	LHJ	22. 12. 27	△				
△					△				



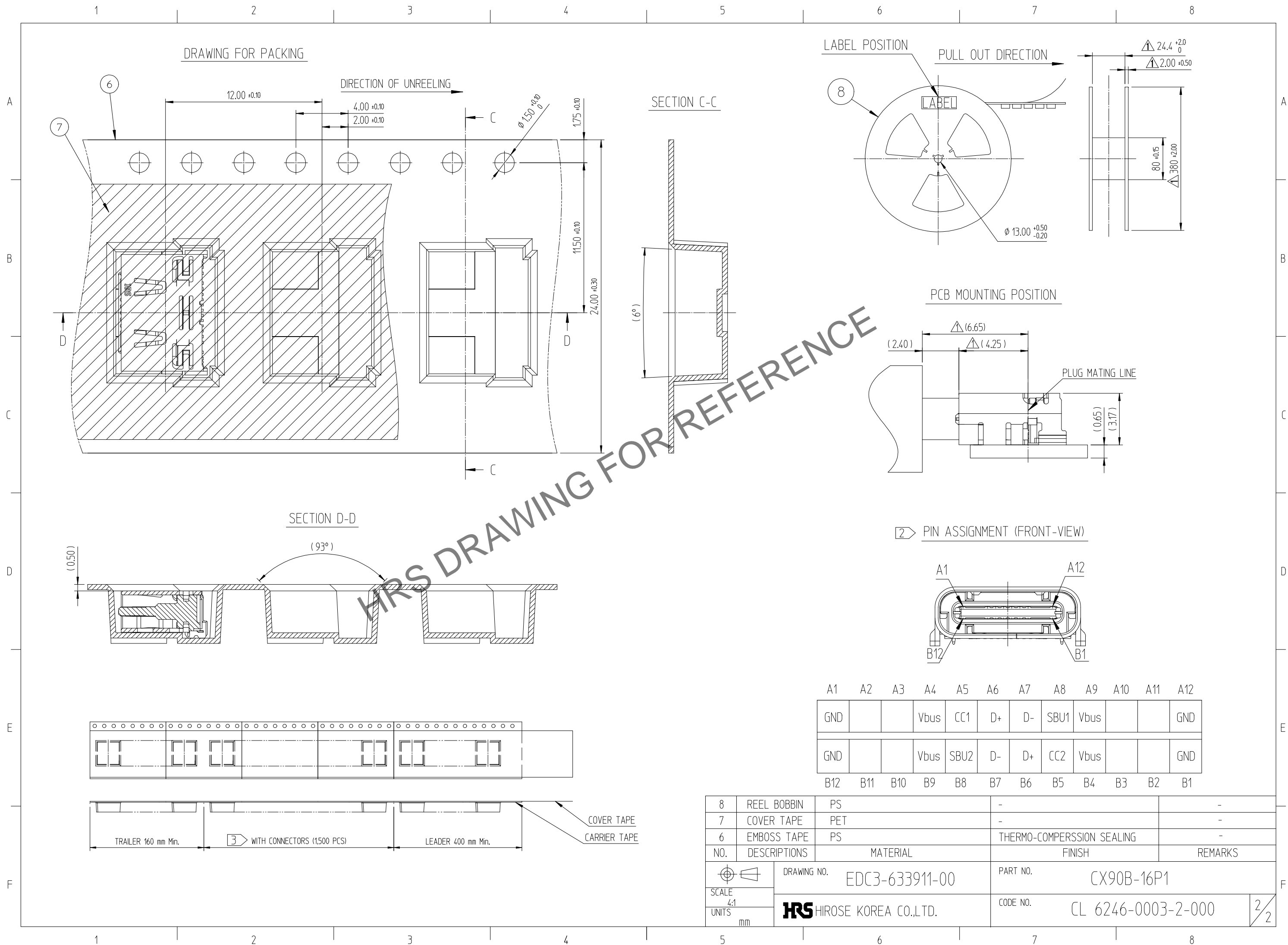
NO.	DESCRIPTIONS	MATERIAL	FINISH	REMARKS
5	MAIN SHELL	STAINLESS STEEL	NICKEL PLATING	-
4	INSERT MOLD	THERMOPLASTIC	BLACK COLOR	UV94V-0
3	MID PLATE	STAINLESS STEEL	NICKEL PLATING	-
2	CONTACT 2ND	COPPER ALLOY	CONTACT AREA : GOLD OVER NICKEL PLATING LEAD AREA : GOLD OVER NICKEL PLATING	-
1	CONTACT 1ST	COPPER ALLOY	CONTACT AREA : GOLD OVER NICKEL PLATING LEAD AREA : GOLD OVER NICKEL PLATING	-

CODE NO. (OLD)				DRAWN	DESIGNED	CHECKED	APPROVED	RELEASED
				Y.G.KIM	Y.G.KIM	H.J.LEE	H.J.LEE	ENG 23.04.05 DEPT
				22.12.01	22.12.01	22.12.01	22.12.01	
DRAWING NO. EDC3-633911-00		PART NO. CX90B-16P1		CODE NO. CL 6246-0003-2-000		1/2		

SCALE 5:1
 UNITS mm

HRS HIROSE KOREA CO.,LTD.

Jul.1.2024 Copyright 2024 HIROSE ELECTRIC CO., LTD. All Rights Reserved.
 In case of consideration for using Automotive equipment / device which demand high reliability, kindly contact our sales window correspondents.



8	REEL BOBBIN	PS	-	-
7	COVER TAPE	PET	-	-
6	EMBOSS TAPE	PS	THERMO-COMPERSSION SEALING	-
NO.	DESCRIPTIONS	MATERIAL	FINISH	REMARKS
		DRAWING NO. EDC3-633911-00	PART NO. CX90B-16P1	
		HRS HIROSE KOREA CO.,LTD.	CODE NO. CL 6246-0003-2-000	2/2

A1	A2	A3	A4	A5	A6	A7	A8	A9	A10	A11	A12
GND			Vbus	CC1	D+	D-	SBU1	Vbus			GND
GND			Vbus	SBU2	D-	D+	CC2	Vbus			GND
B12	B11	B10	B9	B8	B7	B6	B5	B4	B3	B2	B1

