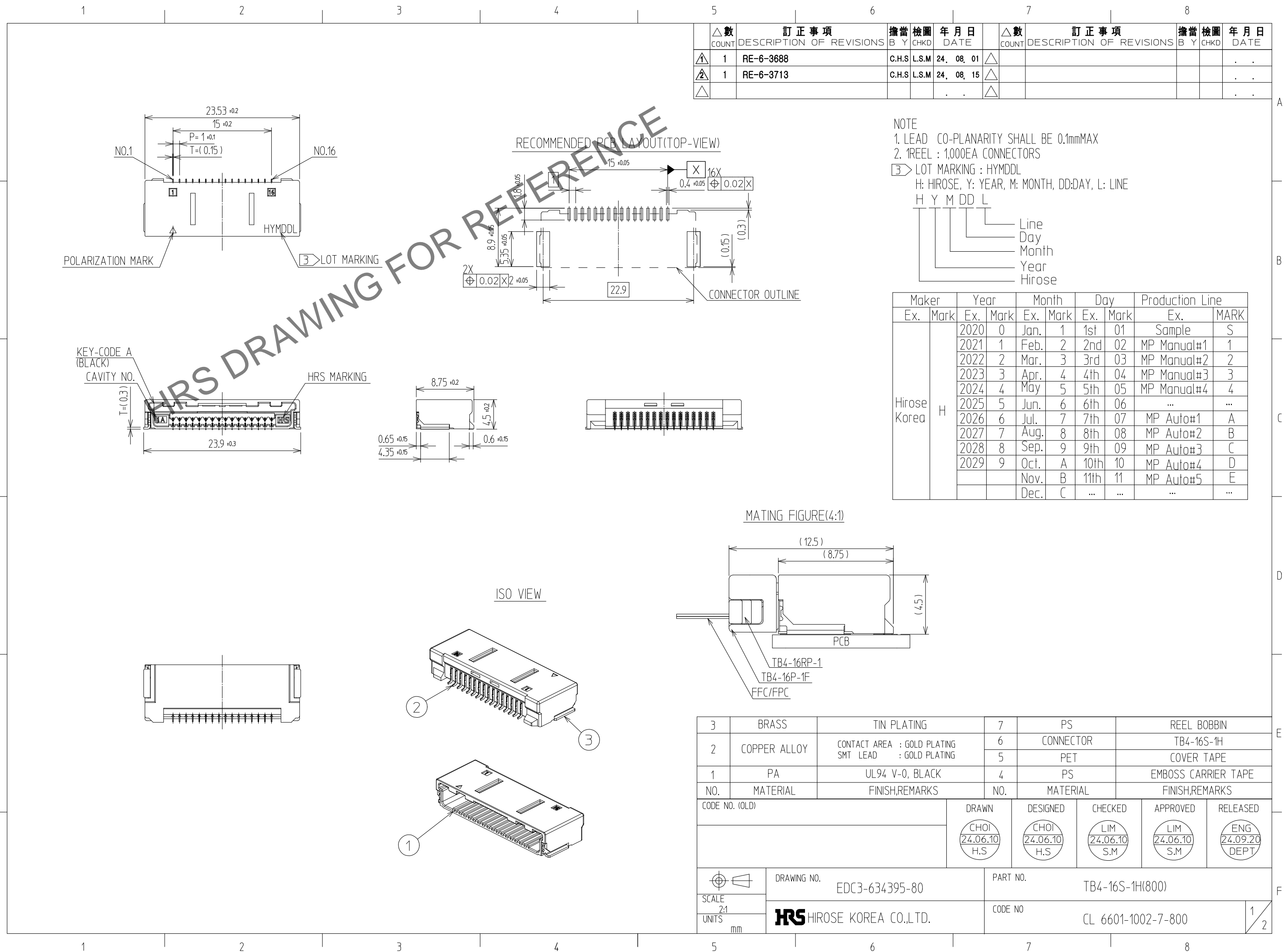


Nov.1.2024 Copyright 2024 HIROSE ELECTRIC CO., LTD. All Rights Reserved.
In case of consideration for using Automotive equipment / device which demand high reliability, kindly contact our sales window



| △數 COUNT | 訂正事項 DESCRIPTION OF REVISIONS | 擔當 B | 檢圖 CHKD | 年月日 DATE | △數 COUNT | 訂正事項 DESCRIPTION OF REVISIONS | 擔當 B | 檢圖 CHKD | 年月日 DATE |
|-------------|----------------------------------|---------|------------|-------------|-------------|----------------------------------|---------|------------|-------------|
| 1 | RE-6-3688 | C.H.S | L.S.M | 24, 08, 01 | | | | | |
| 2 | RE-6-3713 | C.H.S | L.S.M | 24, 08, 15 | | | | | |
| | | | | | | | | | |

NOTE

- LEAD CO-PLANARITY SHALL BE 0.1mmMAX
- 1REEL : 1,000EA CONNECTORS
- LOT MARKING : HYMDDL
H: HIROSE, Y: YEAR, M: MONTH, DD:DAY, L: LINE
H Y M DD L

Line
Day
Month
Year
Hirose

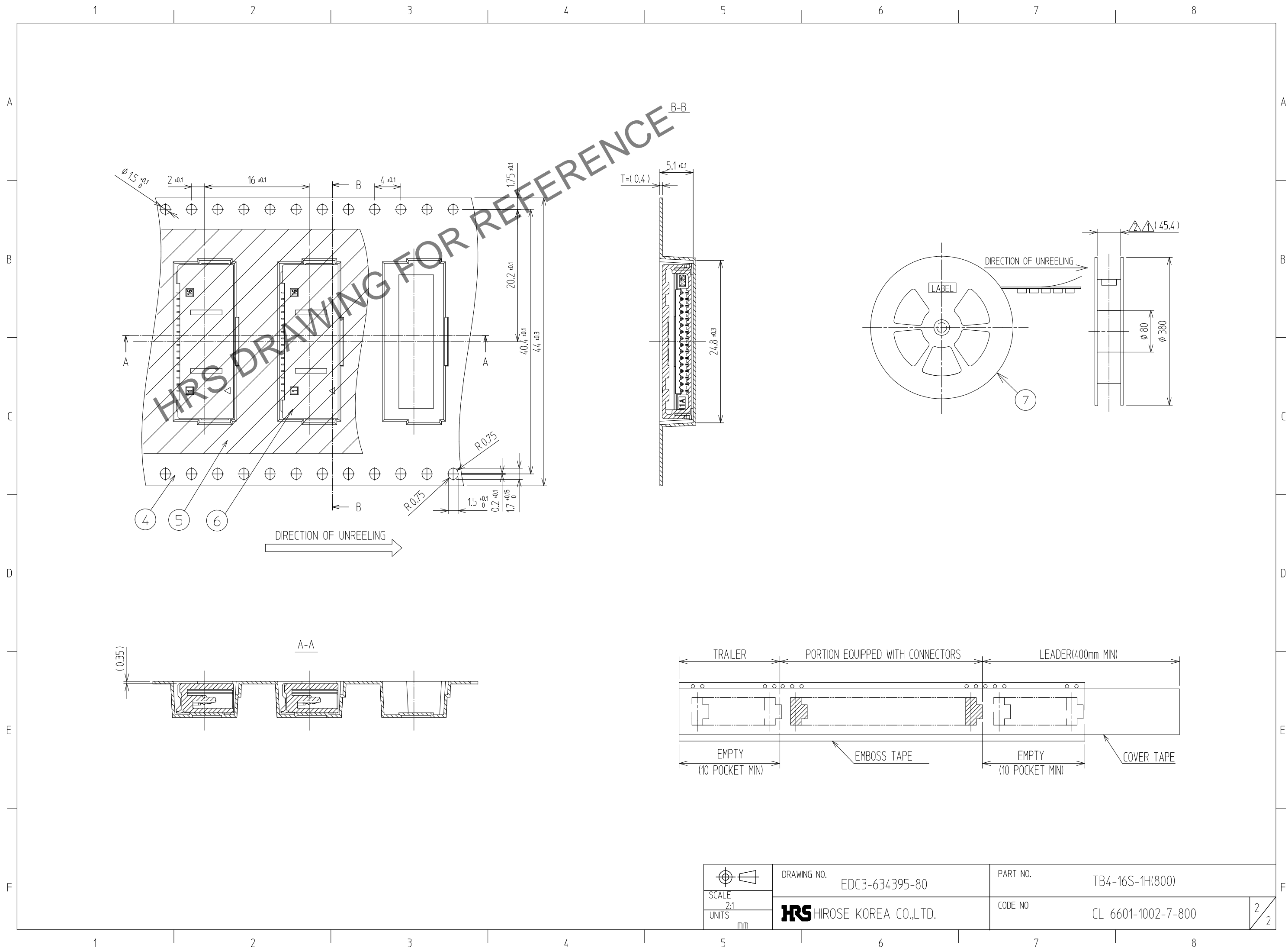
| Maker | Year | Month | Day | Production Line | | | |
|-----------------|------|-------|------|-----------------|-----------|-------------|-----|
| Ex. | Mark | Ex. | Mark | Ex. | MARK | | |
| Hirose Korea | H | 2020 | 0 | Jan. | 1st 01 | Sample | S |
| | | 2021 | 1 | Feb. | 2nd 02 | MP Manual#1 | 1 |
| | | 2022 | 2 | Mar. | 3rd 03 | MP Manual#2 | 2 |
| | | 2023 | 3 | Apr. | 4th 04 | MP Manual#3 | 3 |
| | | 2024 | 4 | May | 5th 05 | MP Manual#4 | 4 |
| | | 2025 | 5 | Jun. | 6th 06 | ... | ... |
| | | 2026 | 6 | Jul. | 7th 07 | MP Auto#1 | A |
| | | 2027 | 7 | Aug. | 8th 08 | MP Auto#2 | B |
| | | 2028 | 8 | Sep. | 9th 09 | MP Auto#3 | C |
| | | 2029 | 9 | Oct. | A 10th 10 | MP Auto#4 | D |
| | | | | Nov. | B 11th 11 | MP Auto#5 | E |
| | | | | Dec. | C ... | ... | ... |

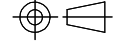
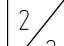

| | | | | | |
|-----|--------------|-----------------------------|-----|-----------|---------------------|
| 3 | BRASS | TIN PLATING | 7 | PS | REEL BOBBIN |
| 2 | COPPER ALLOY | CONTACT AREA : GOLD PLATING | 6 | CONNECTOR | TB4-16S-1H |
| | | SMT LEAD : GOLD PLATING | 5 | PET | COVER TAPE |
| 1 | PA | UL94 V-0, BLACK | 4 | PS | EMBOSS CARRIER TAPE |
| NO. | MATERIAL | FINISH,REMARKS | NO. | MATERIAL | FINISH,REMARKS |

| CODE NO. (OLD) | DRAWN | DESIGNED | CHECKED | APPROVED | RELEASED |
|----------------|-------------------------|-------------------------|------------------------|------------------------|-------------------------|
| | CHOI 24.06.10 H.S | CHOI 24.06.10 H.S | LIM 24.06.10 S.M | LIM 24.06.10 S.M | ENG 24.09.20 DEPT |

| | | |
|-----------------------------|----------------------------------|-------------------------------|
| SCALE 2:1 UNITS mm | DRAWING NO. EDC3-634395-80 | PART NO. TB4-16S-1H(800) |
| | HRS HIROSE KOREA CO.,LTD. | CODE NO CL 6601-1002-7-800 |

Nov.1.2024 Copyright 2024 HIROSE ELECTRIC CO., LTD. All Rights Reserved.
In case of consideration for using Automotive equipment / device which demand high reliability, kindly contact our sales window



| | | | |
|--|---|-------------------------------|---|
|  SCALE 2:1 UNITS mm | DRAWING NO. EDC3-634395-80 | PART NO. TB4-16S-1H(800) |  2 2 |
| |  HIROSE KOREA CO.,LTD. | CODE NO CL 6601-1002-7-800 | |